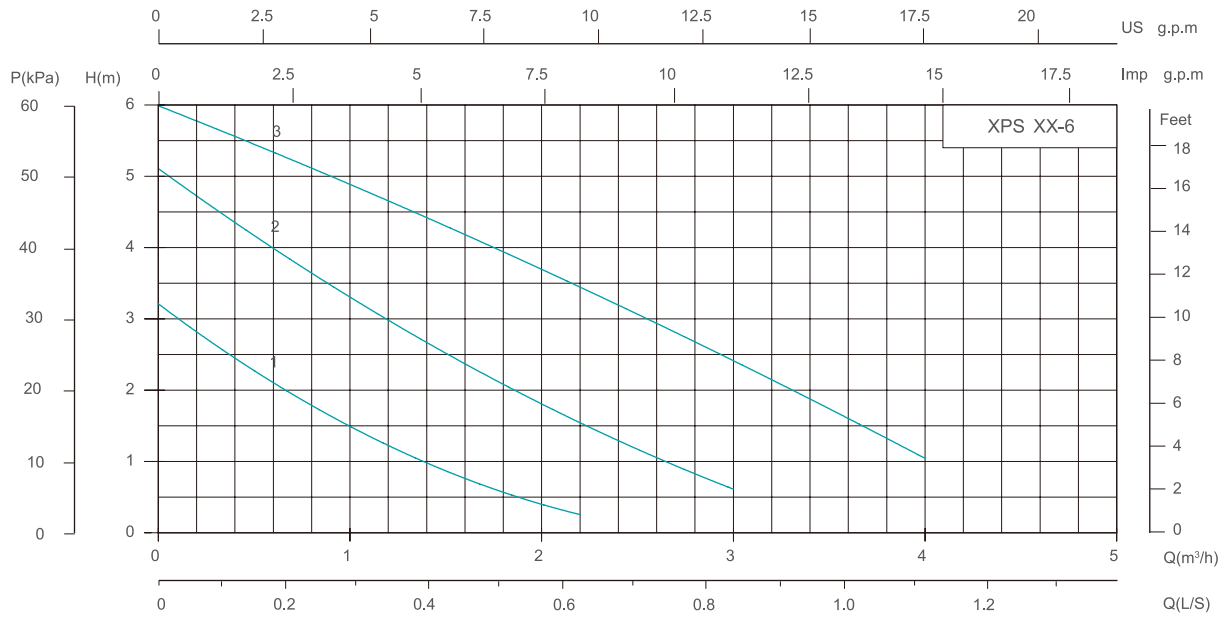
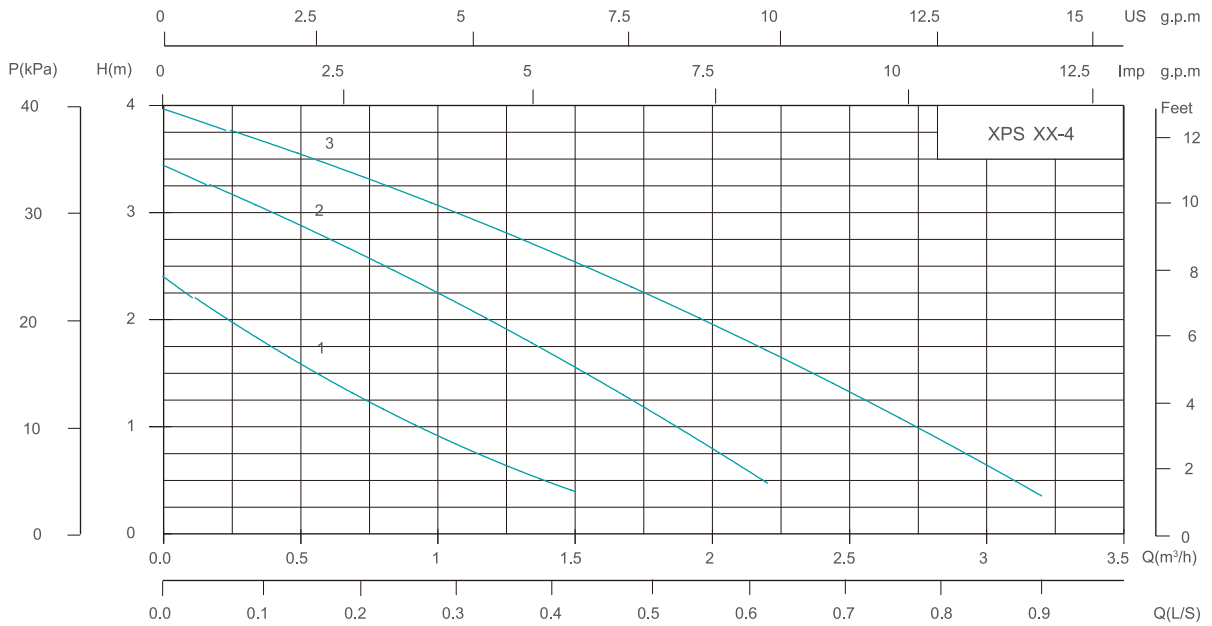
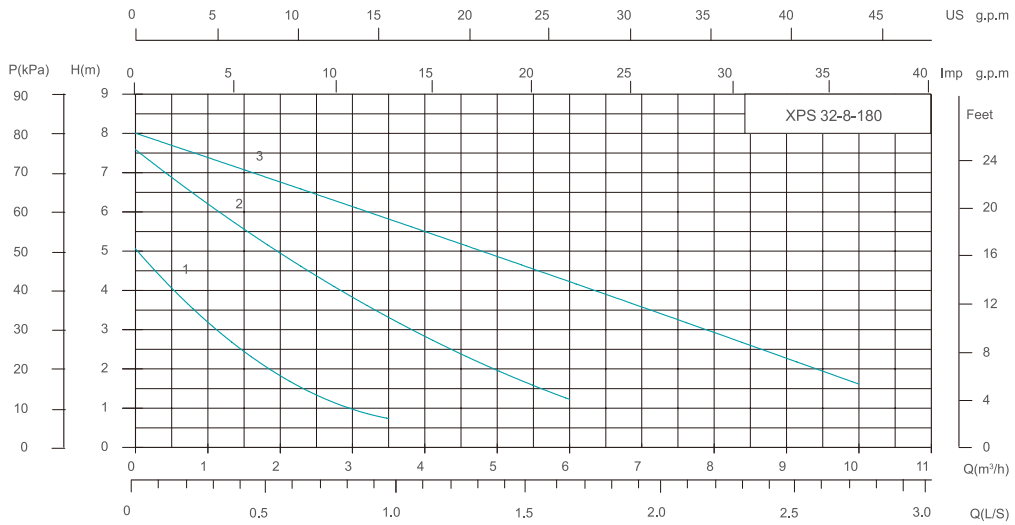
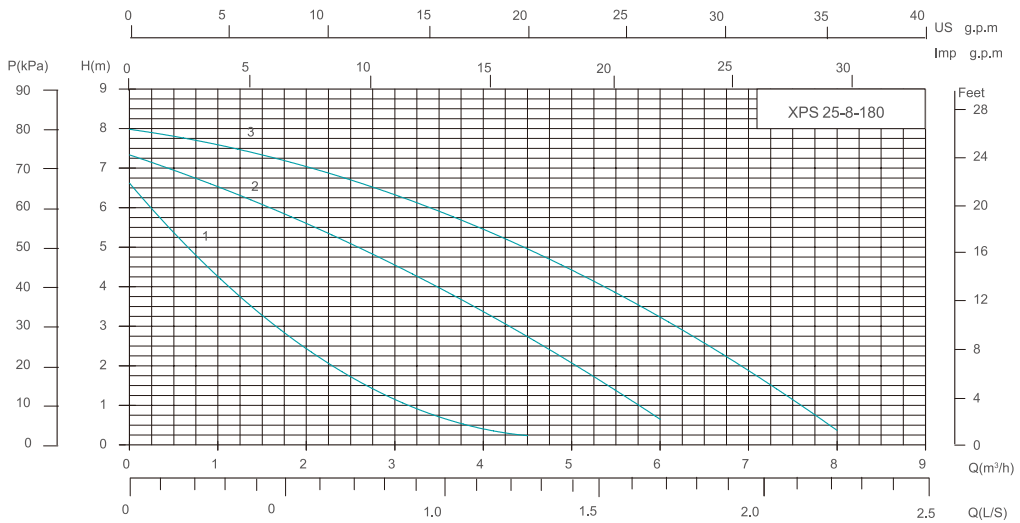
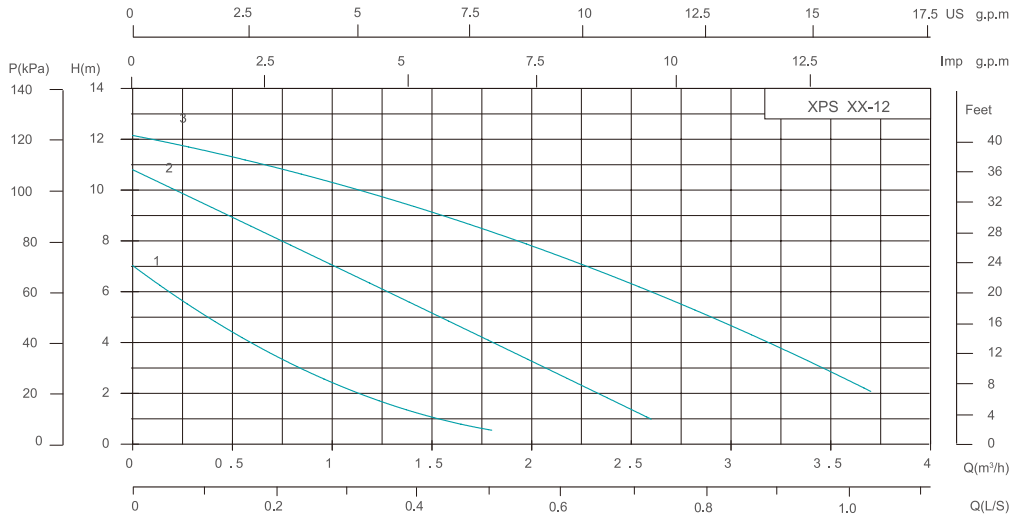
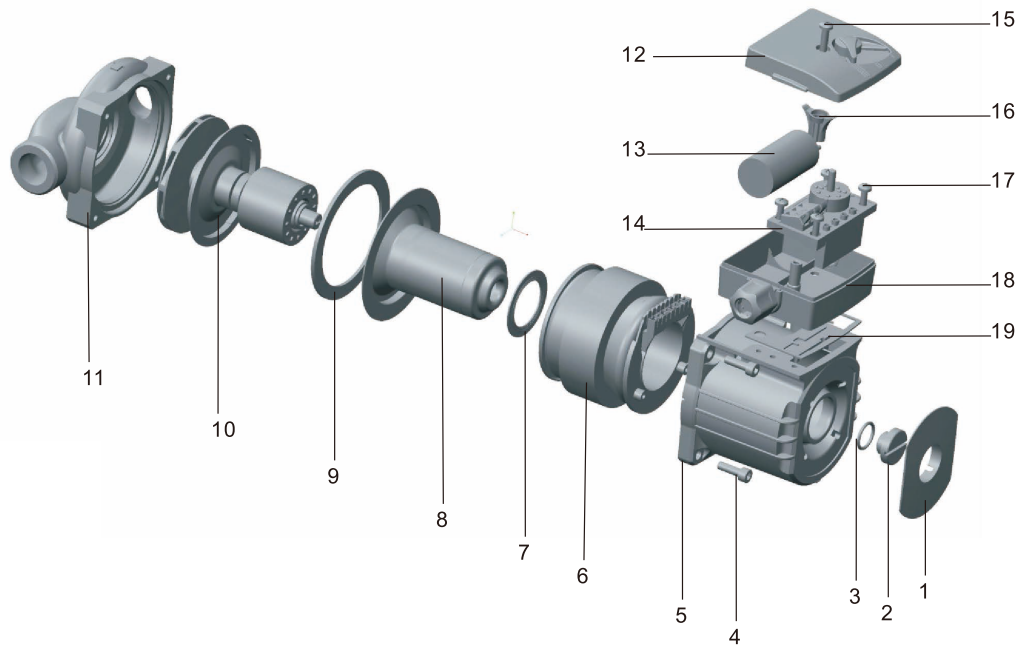


## Performance Curve





## Components & Materials



No.	Component	Material	No.	Component	Material
1	Nameplate	PA6	11	Pump Body	Cast iron
2	Air Cock	Brass	12	Terminal Box Cover	ABS
3	O-ring	EPDM	13	Capacitor	/
4	Hex Socket Screws	Steel	14	Circuit Board	/
5	Stator Housing	Aluminium	15	Self-tapping Screw	Stainless steel
6	Stator	/	16	Capacitor Bracket	ABS
7	Sealing Ring II	EPDM	17	Screws	Steel
8	Rotor Can	Stainless steel	18	Terminal Box Base	PA66G30
9	Sealing Ring I	EPDM	19	Terminal Box Sealing Gasket	EPDM
10	Impeller	PESG30			
	Shaft	Ceramic			
	Thrust Bearing	Graphite			
	Radial Bearing	Ceramic			

## Technical Data

Model	Speed	Input Power P1(W)	Current(A)		Capacitor		Pipe Distance (mm)	Max. Head (m)	Whole Lift (m)	Max. flow (m <sup>3</sup> /h)	Inter Box		Outer Box		20" Loading Qty (pcs)			
			220V 60Hz	127V 60Hz	μF/450V	μF/250V					G.W. (kg)	Dim.(L×W×H)	PCS /CTN	Dim (L×W×H)		G.W. (kg)		
					220V/60Hz	127V/60Hz												
XPS15-4-130	3	60	/	/	2	/	130	4	0~4	2	2.5	150×130×140	8	320×280×300	21	6664		
	2	45																
	1	30																
XPS15-6-130	3	90	0.40	0.80	2.5	6	130	6	0~6	2	2.5	150×130×140	8	320×280×300	21	6664		
	2	65	0.30	0.65														
	1	45	0.20	0.41														
XPS15-9-140	3	120	0.48	0.83	3	10	140	9	0~9	1.6	2.8	180×120×135	3	380×260×290	23	5880		
	2	85	0.38	0.66														
	1	60	0.26	0.45														
XPS20-4-130	3	60	/	/	2	/	130	4	0~4	2.2	2.4	150×130×140	8	320×280×300	22	6664		
	2	45																
	1	30																
XPS20-6-130	3	90	0.40	0.80	2.5	6	130	6	0~6	2.2	2.4	150×130×140	8	320×280×300	22	6664		
	2	65	0.30	0.65														
	1	45	0.20	0.41														
XPS25-4-130	3	60	/	/	2	/	130	4	0~4	3	3	150×130×140	8	320×280×300	25	4800		
	2	45																
	1	30																
XPS25-6-130	3	90	0.40	0.80	2.5	6	130	6	0~6	3	3	150×130×140	8	320×280×300	25	4800		
	2	65	0.30	0.65														
	1	45	0.20	0.41														
XPS25-4-180	3	60	/	/	2	/	180	4	0~4	3	3.2	200×130×155	8	420×280×330	26	4800		
	2	45																
	1	30																
XPS25-6-180	3	90	0.40	0.80	2.5	6	180	6	0~6	3	3.2	200×130×155	8	420×280×330	26	4800		
	2	65	0.30	0.65														
	1	45	0.20	0.41														
XPS32-4-180	3	60	/	/	2	/	180	4	0~4	3.5	3.6	200×130×155	8	420×280×330	30	4800		
	2	45																
	1	30																
XPS32-6-180	3	90	0.40	0.80	2.5	/	180	5	0~5	3.5	3.6	200×130×155	8	420×280×330	30	4800		
	2	65	0.30	0.65														
	1	45	0.20	0.41														
XPS20-12-180	3	245	1.04	1.80	6	20	180	12	0~12	3	4.8	200×160×180	4	420×340×200	26	3200		
	2	210	0.92	1.60														
	1	140	0.63	1.10														
XPS25-8-180	3	200	0.83	1.44	6	15	180	8	0~8	7	4.8	200×160×180	4	420×340×200	21	3200		
	2	185	0.78	1.35														
	1	145	0.62	1.07														
XPS25-12-180	3	245	1.04	1.80	6	20	180	12	0~12	3.5	5	200×160×180	4	420×340×200	21	3200		
	2	210	0.92	1.60														
	1	140	0.63	1.10														
XPS32-8-180	3	245	/	/	6	/	180	8	0~8	10	5.4	200×160×180	4	420×340×200	30	3200		
	2	210																
	1	140																