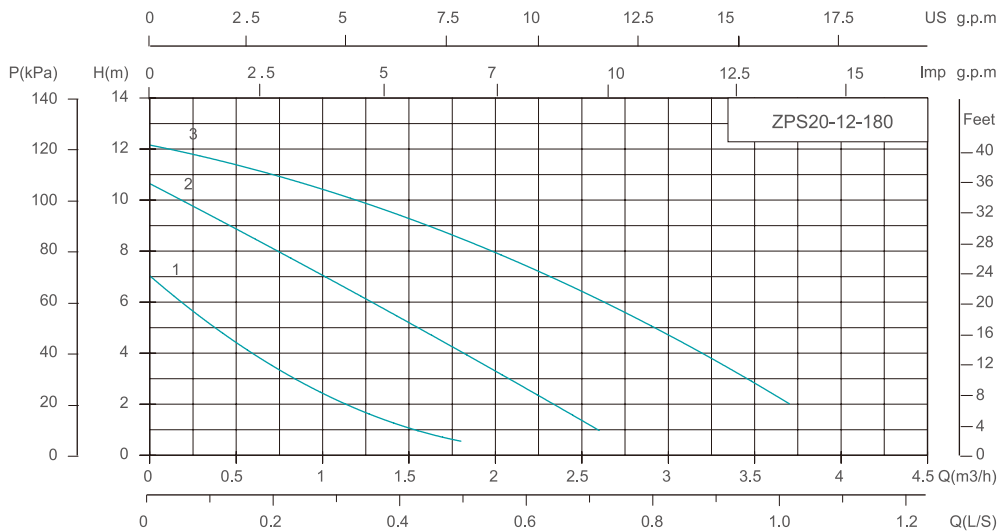
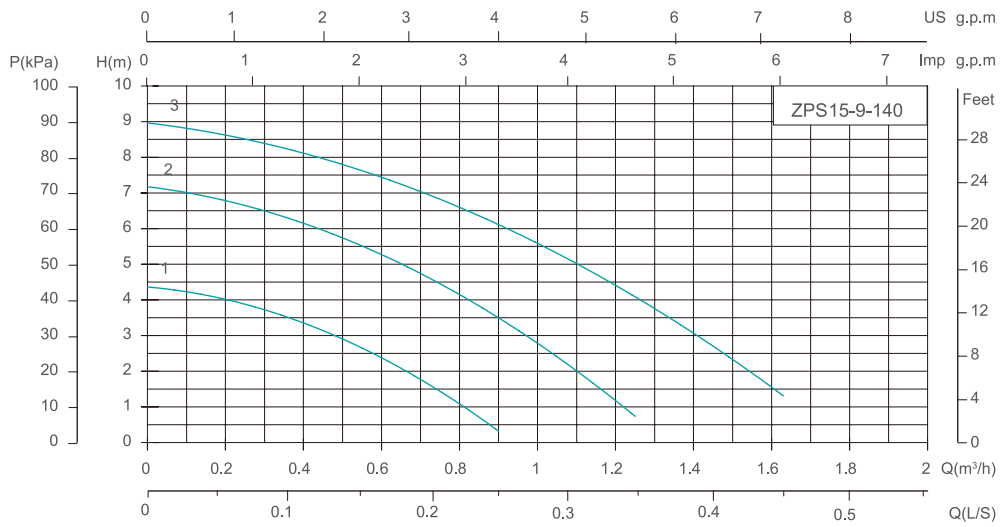
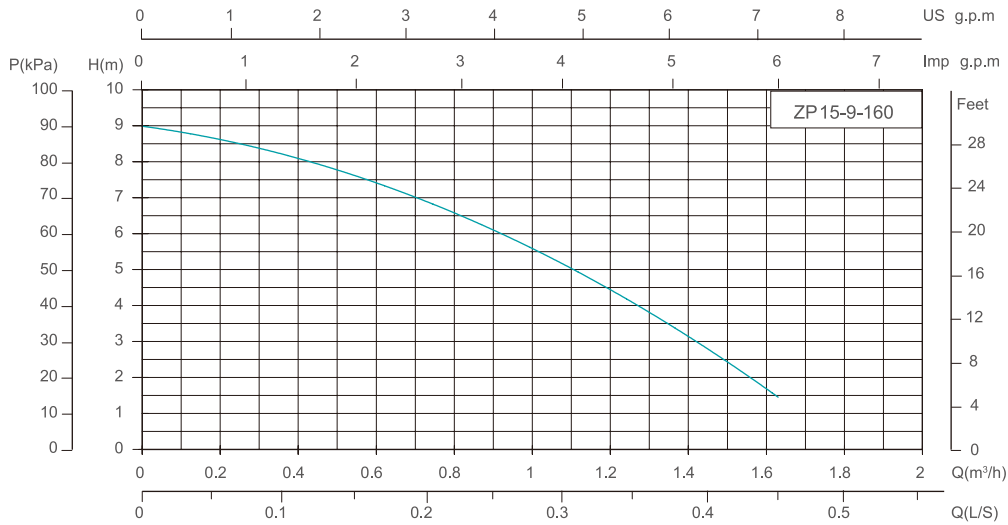
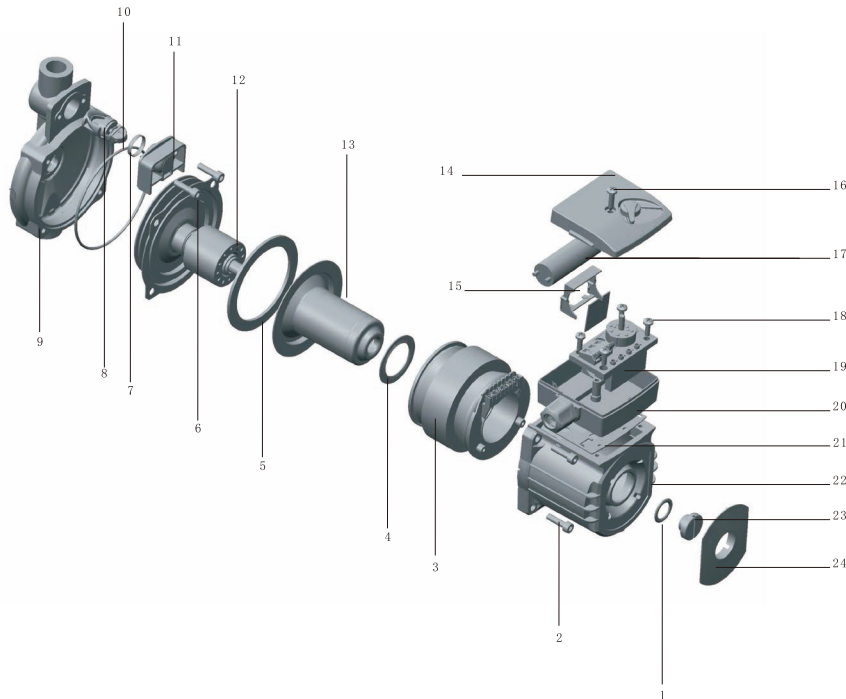


Performance Curve



Components & Materials



No.	Component	Material	No.	Component	Material
1	O-ring	EPDM	13	Rotor Can	Stainless Steel
2	Hex Socket Screws	Steel	14	Terminal Box Cover	ABS
3	Stator	/	15	Circuit Board Bracket	PA66G30
4	Sealing Ring II	EPDM	16	Self-tapping Screw	Stainless Steel
5	Sealing Ring I	EPDM	17	Capacitor	/
6	Hex Socket Screws	Steel	18	Screws	Steel
7	O-Ring	EPDM	19	Circuit Board	/
8	Flow Switch	/	20	Terminal Box Base	PA66G30
9	Pump Body	Cast Iron	21	Terminal Box Sealing Gasket	EPDM
10	O-ring	EPDM	22	Stator Housing	Aluminium
11	Flow Switch Cover	PA66G30	23	Air Cock	Brass
12	Impeller	PESG30	24	Nameplate	PA6
	Shaft	Ceramic			
	Thrust Bearing	Graphite			
	Radial Bearing	Ceramic			

Technical Data

Model	Speed	Input Power P1(W)	Current(A)		Capacitor		Pipe Distance (mm)	Max. Head (m)	Whole Lift (m)	Max. flow (m ³ /h)	Inter Box			Outer Box		20" Loading Qty (pcs)
			220V 60Hz	127V 60Hz	μF/450V 220V/60Hz	μF/250V 127V/60Hz					G.W. (kg)	Dim.(L×W×H)	PCS /CTN	Dim (L×W×H)	G.W. (kg)	
ZP15-9-160	-	120	0.48	0.95	3	10	160	9	0~9	1.6						
	3	120	0.48	0.95												
ZPS15-9-140	2	85	0.38	0.66	3	10	140	9	0~9	1.6	2.8	180x120x135	8	380x260x290	23	5880
	1	60	0.26	0.45												
ZPS20-12-180	3	245	1.04	1.80												
	2	210	0.92	1.60	6	20	180	12	0~12	3.5	5	200x160x180	4	420x340x200	21	3200
	1	140	0.63	1.10												