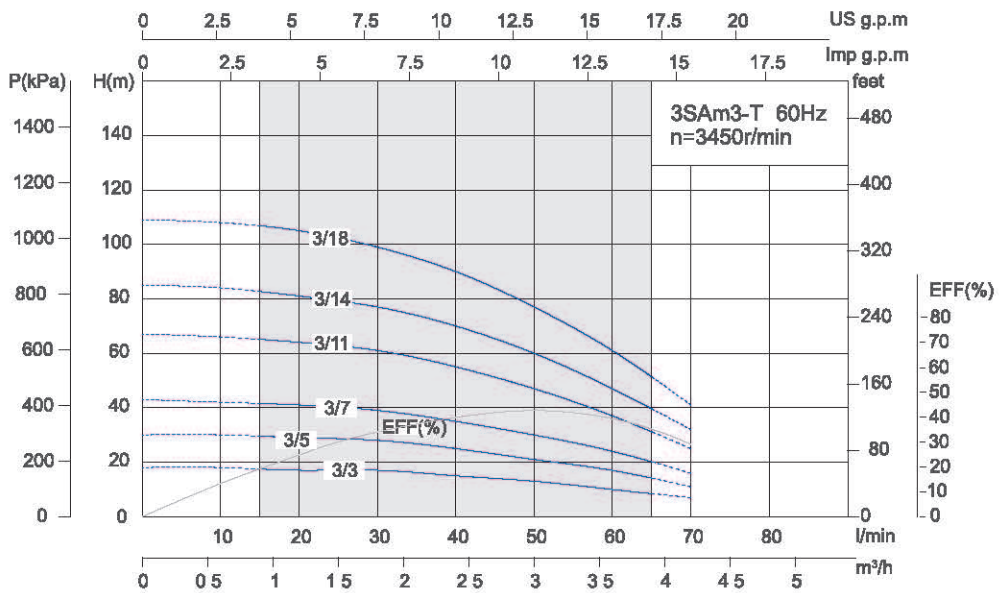
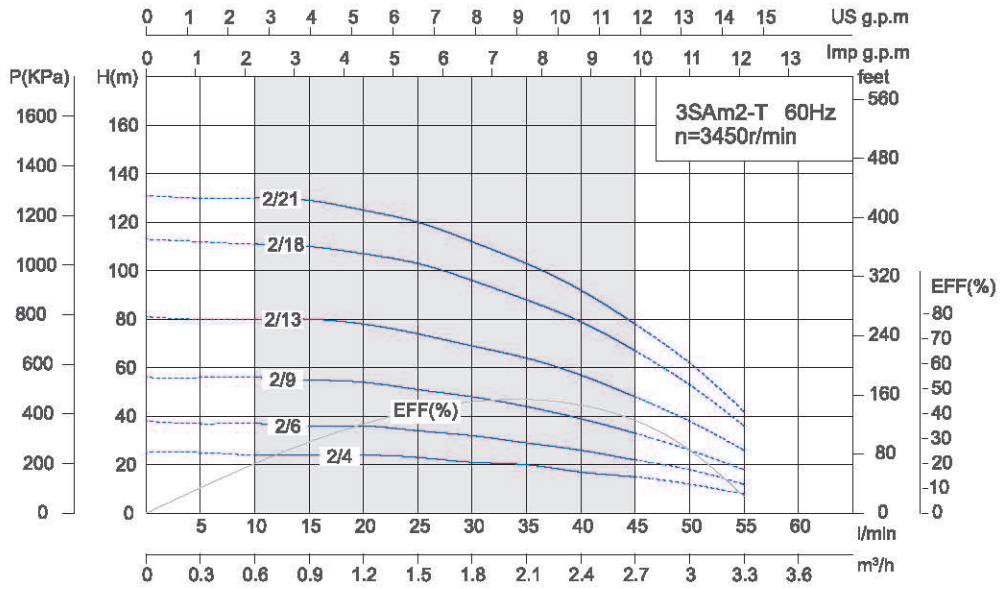


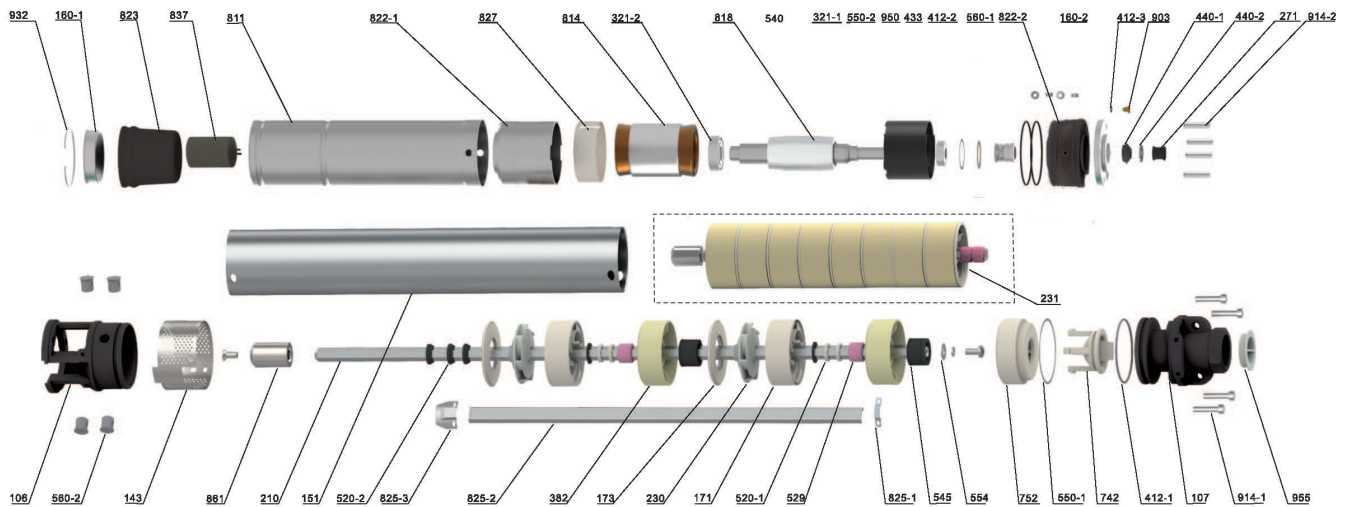
Performance Curve



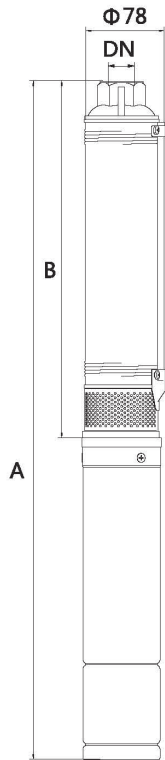
Model	Power		Rate Current (A)		Flow													Head Range (m)	
	Single-Phase	kW	HP	Rate Current (A)		m³/h	0	0.3	0.6	0.9	1.2	1.5	1.8	2.1	2.4	2.7	3		3.3
				127V	220V	l/min	0	5	10	15	20	25	30	35	40	45	50		55
3SAm2/4T	0.18	0.25	3.4	1.7	H(m)	25.1	25	24.3	24.1	24	23	21	19	17	15	12	8	24~15	
3SAm2/6T	0.25	0.33	4.6	2.3		38	37.4	37	36.2	36	34	32	29	26	22	18	12	37~22	
3SAm2/9T	0.37	0.5	6.6	3.3		56.2	56.1	56	55	54	51	48	44	39	33	26	18	56~33	
3SAm2/13T	0.55	0.75	9.2	4.6		81	80.2	80.1	80	78	74	69	64	57	48	38	26	80~48	
3SAm2/18T	0.75	1	12	6		113	112	111	110	107	103	96	88	79	67	53	36	111~67	
3SAm2/21T	1.1	1.5	16.8	8.4		131	130.1	130	129	125	120	112	103	92	78	62	42	130~78	

Model	Power		Rate Current (A)		Flow									Head Range (m)	
	Single-Phase	kW	HP	Rate Current (A)		m³/h	0	0.6	1.2	1.8	2.4	3	3.6		4.2
				127V	220V	l/min	0	10	20	30	40	50	60		70
3SAm3/3T	0.18	0.25	3.4	1.7	H(m)	18.1	18	17.2	17	15	13	10	7	17.5~8.5	
3SAm3/5T	0.25	0.33	4.6	2.3		30.1	30	29	28	25	21	17	11	29.5~14	
3SAm3/7T	0.37	0.5	6.6	3.3		43	42	41	39	35	30	24	16	41.5~20	
3SAm3/11T	0.55	0.75	9.2	4.6		67	66	64	61	55	47	37	25	65~31	
3SAm3/14T	0.75	1	12	6		85	84	81	77	70	60	47	32	82.5~40	
3SAm3/18T	1.1	1.5	16.8	8.4		109	108	105	99	90	77	61	41	107~51	

Components & Materials



No.	Part name	No.	Part name	No.	Part name	No.	Part name	No.	Part name
106	Inlet joint	231	Impeller string	440-2	Anti-sand pad	560-2	Locating pin	825-3	Small pressing plate
107	Delivery chamber	271	Anti-sand sleeve	520-1	Spacer bush	742	Bonnet	827	Insulating paper
143	Net cover	321-1	Deep groove ball bearing	520-2	Spacer bush	752	Valve seat	837	Capacitor
151	Sleeve	321-2	Deep groove ball bearing	529	Shaft sleeve	811	Casing	903	Vent cock
160-1	Bottom cover	382	Bearing block	540	Upper spacer sleeve	814	Stator core with winding	914-1	Hexagon socket head cap screw
160-2	Cover plate	412-1	O-ring	545	Rubber bearing	818	Rotor	914-2	Hexagon socket flat point set screw
171	Guide vane	412-2	O-ring	550-1	Adjusting washer	822-1	Lower bearing block	932	Retaining ring
173	Guide vane cover plate	412-3	O-ring	550-2	Flat washer	823	Pressure regulating film	950	Wave spring
210	Pump shaft	433	Mechanical seal	554	Flat washer	825-1	Small pressing plate	955	Dust cover
230	Impeller	440-1	Anti-sand seat	560-1	Locating sleeve	825-2	Cable pressing plate		



Dimensions & Weight

Model Single-phase	Pipe Connection (DN)	Dim. (mm)		N.W.(kg)	
		B	A Single-Phase	Body(kg)	Motor(kg) M(Single-phase)
3SAm2/4T	G1/NPT1	328	743	2	5.5
3SAm2/6T		373	812	2.3	6.2
3SAm2/9T		440	909	2.7	7
3SAm2/13T		553	1063	3.3	7.9
3SAm2/18T		665	1205	4	8.7
3SAm2/21T		732	1401	4.5	10.9

Model Single-phase	Pipe Connection (DN)	Dim. (mm)		N.W.(kg)	
		B	A Single-Phase	Body(kg)	Motor(kg) M(Single-phase)
3SAm3/3T	G1/NPT1	322	737	1.8	5.5
3SAm3/5T		378	818	2.2	6.2
3SAm3/7T		434	903	2.6	7
3SAm3/11T		569	1079	3.5	7.9
3SAm3/14T		653	1192	4.1	8.7
3SAm3/18T		764	1433	4.9	10.9

Packing Size & Weight

Model Single-phase	Dim. (mm) Pump(LxWxH)	G.W.(kg)	20"LoadinE Qty.(pcs)
3SAm2/4T	750x90x185	6.4	2040
3SAm2/6T	830x90x185	7.4	1870
3SAm2/9T	930x90x185	8.5	1670
3SAm2/13T	1080x90x185	10.2	1430
3SAm2/18T	1230x90x185	11.6	1260
3SAm2/21T	1370x90x185	14.3	1090

Model Single-phase	Dim. (mm) Pump(LxWxH)	G.W.(kg)	20"LoadinE Qty.(pcs)
3SAm3/3T	750x90x185	6.3	2040
3SAm3/5T	830x90x185	7.3	1850
3SAm3/7T	910x90x185	8.2	1680
3SAm3/11T	1080x90x185	10	1410
3SAm3/14T	1180x90x185	11.1	1270
3SAm3/18T	1370x90x185	13.9	1060

