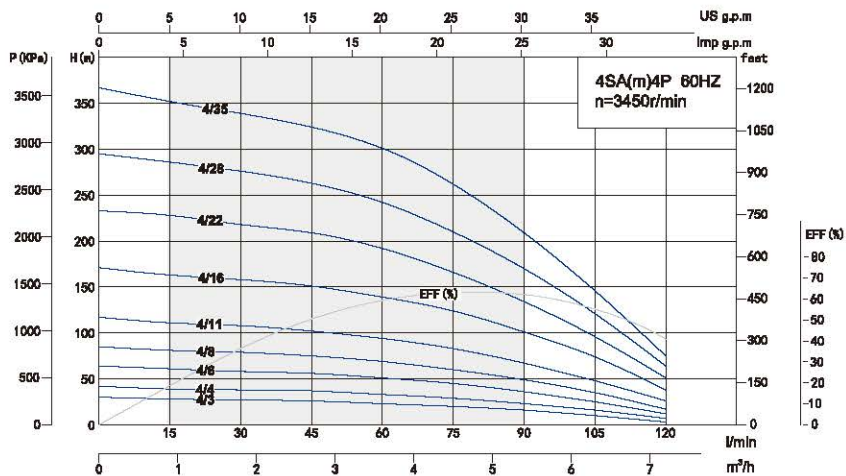
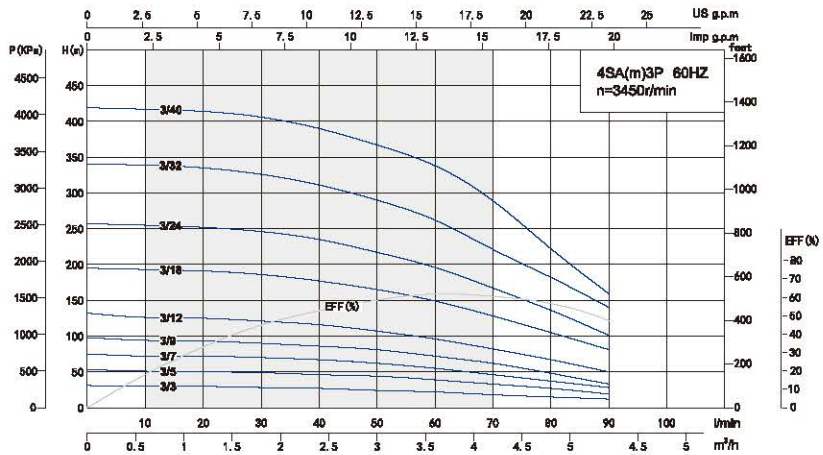
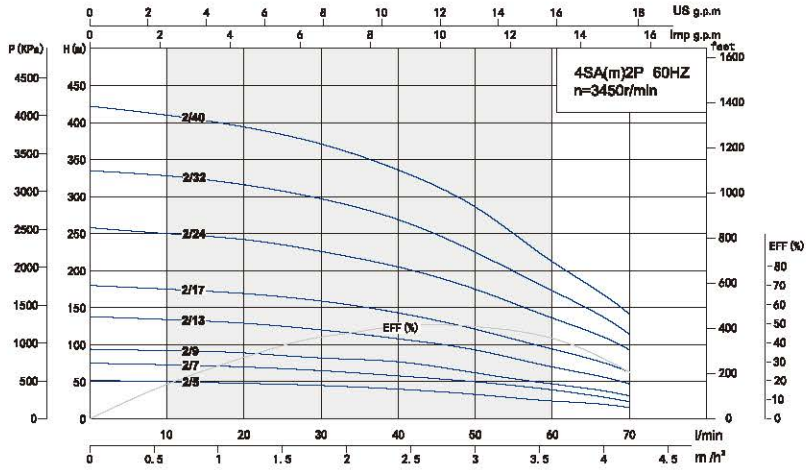
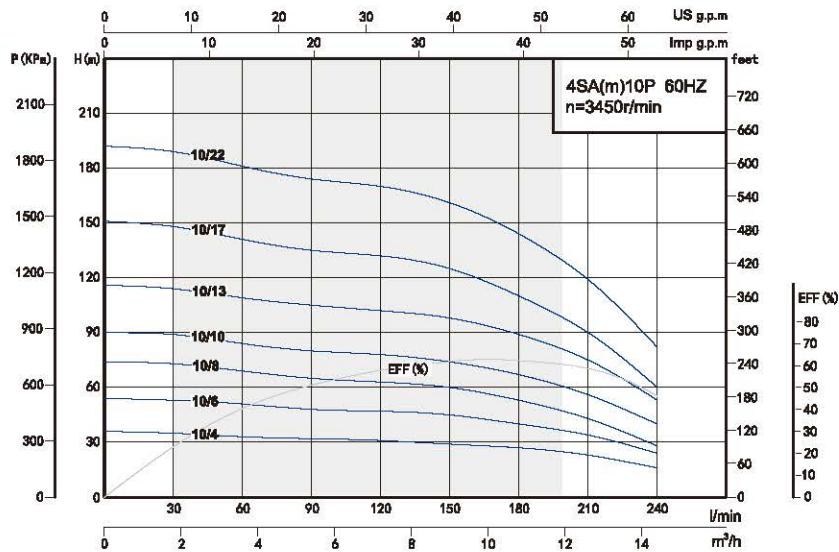
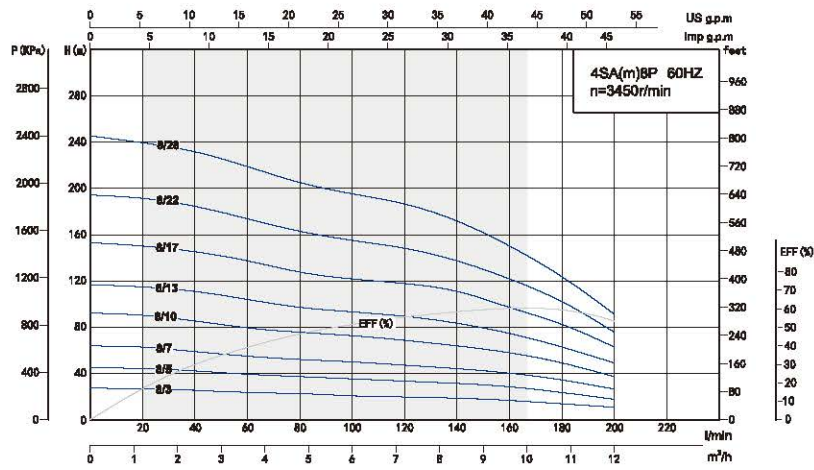
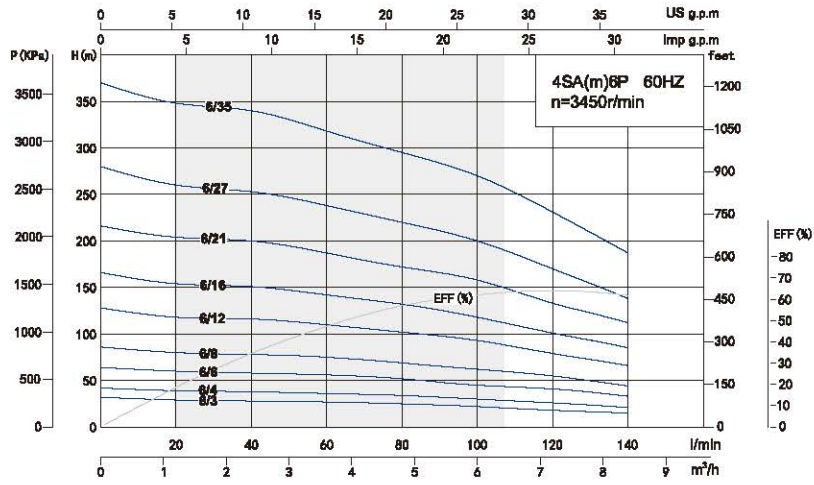


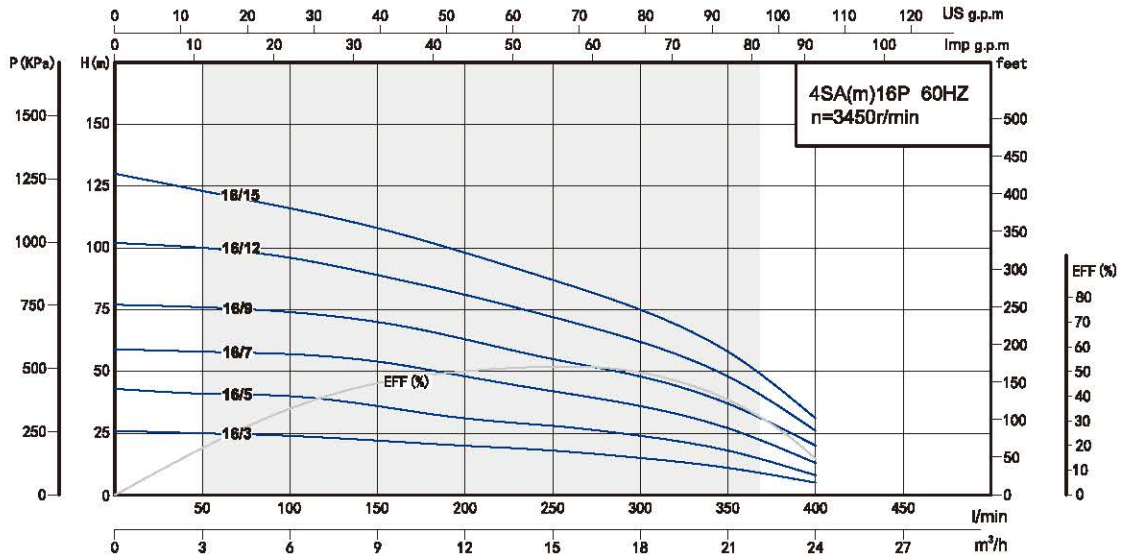
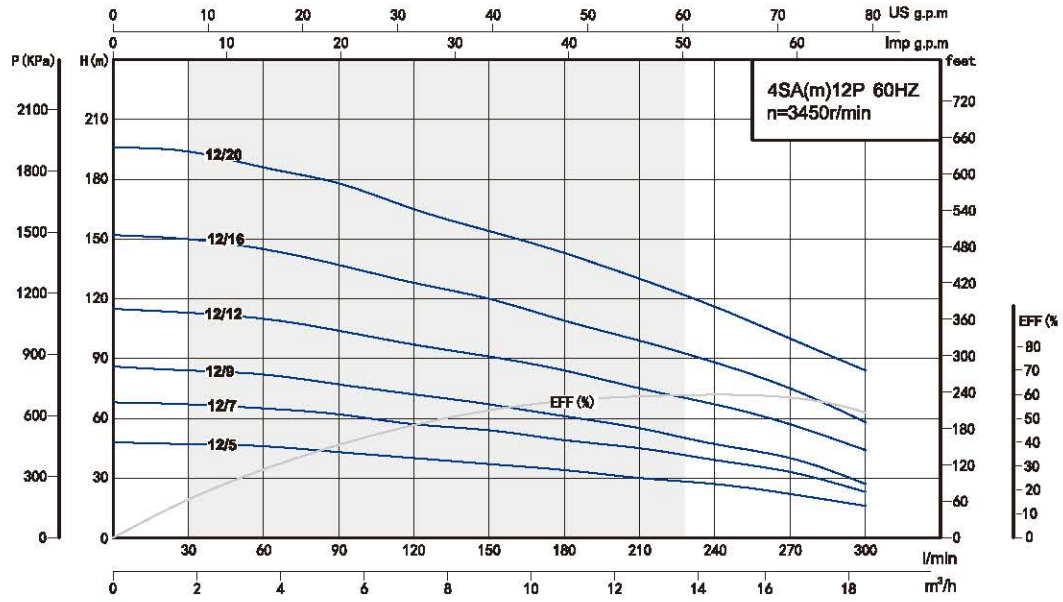
Performance Curve



Performance Curve



Performance Curve



Model		Power		Rate Current (A)				Flow									Head Range (m)
Single-Phase	Three-Phase	kW	HP	Single-Phase		Three-Phase		m ³ /h	0	0.6	1.2	1.8	2.4	3	3.6	4.2	
110V/220V	220V/380V			110V	220V	220V	380V		l/min	0	10	20	30	40	50	60	
4SAm2/5-0.37P	-	0.37	0.5	7.2	3.5	-	-	H(m)	52	50	48	45	40	33	24	15	49~20
4SAm2/7-0.55P	-	0.55	0.75	10.0	4.8	-	-		75	73	70	65	58	50	39	23	70~46
4SAm2/9-0.75P	4SA2/9-0.75P	0.75	1	12.4	6.3	4.5	2.6		94	92	89	82	77	62	47	31	90~60
4SAm2/13-1.1P	4SA2/13-1.1P	1.1	1.5	18.0	8.3	6.1	3.5		138	134	129	120	108	93	70	47	130~89
4SAm2/17-1.5P	4SA2/17-1.5P	1.5	2	-	11.3	7.6	4.4		180	175	169	159	143	121	94	63	170~110
4SAm2/24-2.2P	4SA2/24-2.2P	2.2	3	-	15.2	10.4	6.0		258	250	242	226	205	175	136	93	240~160
-	4SA2/32-3P	3	4	-	-	14.1	8.1		335	328	316	297	269	225	173	114	310~188
-	4SA2/40-4P	4	5.5	-	-	17.0	9.8		422	410	394	371	336	286	212	141	385~228

Model		Power		Rate Current (A)				Flow										Head Range (m)	
Single-Phase	Three-Phase	kW	HP	Single-Phase		Three-Phase		m ³ /h	0	0.6	1.2	1.8	2.4	3	3.6	4.2	4.8		5.4
110V/220V	220V/380V			110V	220V	220V	380V		l/min	0	10	20	30	40	50	60	70		80
4SAm3/3-0.37P	-	0.37	0.5	7.2	3.5	-	-	H(m)	31	30	30	28	27	24	22	18	15	12	30~15
4SAm3/5-0.55P	-	0.55	0.75	10.0	4.8	-	-		53	51	50	49	46	44	39	33	27	19	50~27
4SAm3/7-0.75P	4SA3/7-0.75P	0.75	1	12.4	6.3	4.5	2.6		75	72	72	70	67	62	55	46	37	28	72~37
4SAm3/9-1.1P	4SA3/9-1.1P	1.1	1.5	18.0	8.3	6.1	3.5		98	94	93	90	86	81	72	62	48	33	93~48
4SAm3/12-1.5P	4SA3/12-1.5P	1.5	2	-	11.3	7.6	4.4		132	126	125	121	116	107	96	82	67	50	125~67
4SAm3/18-2.2P	4SA3/18-2.2P	2.2	3	-	15.2	10.4	6.0		195	193	191	186	177	165	149	128	105	81	191~105
-	4SA3/24-3P	3	4	-	-	14.1	8.1		257	255	252	246	235	217	196	167	136	101	252~136
-	4SA3/32-4P	4	5.5	-	-	17.0	9.8		340	339	335	326	311	290	262	221	182	140	335~182
-	4SA3/40-5.5P	5.5	7.5	-	-	21.8	12.8		419	417	414	406	390	367	338	289	222	159	414~222

Model		Power		Rate Current (A)				Flow									Head Range (m)	
Single-Phase	Three-Phase	kW	HP	Single-Phase		Three-Phase		m ³ /h	0	0.9	1.8	2.7	3.6	4.5	5.4	6.3		7.2
110V/220V	220V/380V			110V	220V	220V	380V		l/min	0	15	30	45	60	75	90		105
4SAm4/3-0.37P	-	0.37	0.5	7.2	3.5	-	-	H(m)	30	28	27	26	23	20	16	10	3	27~16
4SAm4/4-0.55P	-	0.55	0.75	10.0	4.8	-	-		42	39	38	37	33	29	23	16	7	39~24
4SAm4/6-0.75P	4SA4/6-0.75P	0.75	1	12.4	6.3	4.5	2.6		64	61	58	56	51	45	36	25	12	58~36
4SAm4/8-1.1P	4SA4/8-1.1P	1.1	1.5	18.0	8.3	6.1	3.5		85	81	79	75	69	60	49	35	17	80~49
4SAm4/11-1.5P	4SA4/11-1.5P	1.5	2	-	11.3	7.6	4.4		117	111	108	102	94	83	67	48	26	109~69
4SAm4/16-2.2P	4SA4/16-2.2P	2.2	3	-	15.2	10.4	6.0		171	163	158	151	139	124	101	74	38	157~96
-	4SA4/22-3P	3	4	-	-	14.1	8.1		233	228	218	209	192	166	134	96	51	207~122
-	4SA4/28-4P	4	5.5	-	-	17.0	9.8		295	286	276	263	242	210	170	121	64	264~156
-	4SA4/35-5.5P	5.5	7.5	-	-	21.8	12.8		367	352	339	324	301	262	209	146	75	335~198

Model		Power		Rate Current (A)				Flow									Head Range (m)	
Single-Phase	Three-Phase	kW	HP	Single-Phase		Three-Phase		m ³ /h	0	1.2	2.4	3.6	4.8	6	7.2	8.4		9.6
110V/220V	220V/380V			110V	220V	220V	380V		l/min	0	20	40	60	80	100	120		140
4SAm6/3-0.55P	-	0.55	0.75	10.0	4.8	-	-	H(m)	32	29	28	27	25	22	18	15	10	29~16
4SAm6/4-0.75P	4SA6/4-0.75P	0.75	1	12.4	6.3	4.5	2.6		42	39	38	36	34	30	26	21	15	38~21
4SAm6/6-1.1P	4SA6/6-1.1P	1.1	1.5	18.0	8.3	6.1	3.5		64	60	58	56	52	45	41	33	23	58~32
4SAm6/8-1.5P	4SA6/8-1.5P	1.5	2	-	11.3	7.6	4.4		86	80	78	75	69	62	55	44	33	79~44
4SAm6/12-2.2P	4SA6/12-2.2P	2.2	3	-	15.2	10.4	6.0		128	118	116	110	102	93	79	66	49	116~66
-	4SA6/16-3P	3	4	-	-	14.1	8.1		166	154	151	142	132	118	101	85	61	152~85
-	4SA6/21-4P	4	5.5	-	-	17.0	9.8		216	204	200	187	172	158	133	112	82	200~110
-	4SA6/27-5.5P	5.5	7.5	-	-	21.8	12.8		280	260	253	238	220	200	170	138	100	253~138
-	4SA6/35-7.5P	7.5	10	-	-	30.4	20.8		370	348	340	318	295	270	231	187	141	338~188

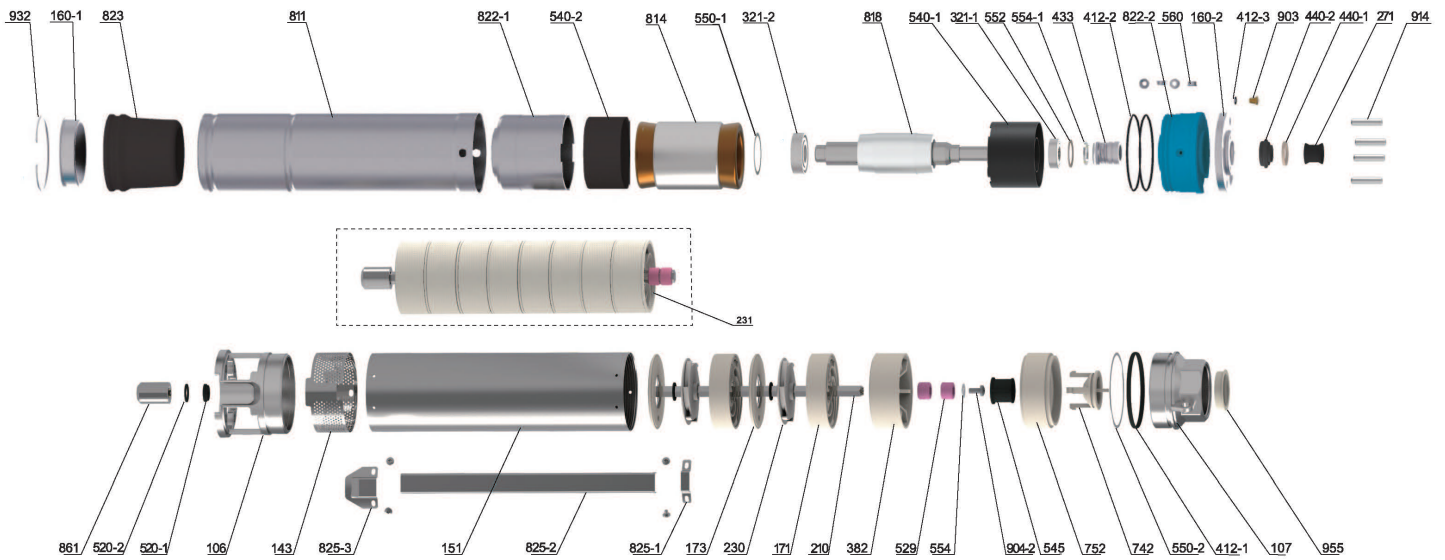
Model		Power		Rate Current (A)				Flow												Head Range (m)
Single-Phase	Three-Phase	kW	HP	Single-Phase		Three-Phase		m ³ /h	0	1.2	2.4	3.6	4.8	6	7.2	8.4	9.6	10.8	12	
110V/220V	220V/380V			110V	220V	220V	380V	l/min	0	20	40	60	80	100	120	140	160	180	200	
4SAm8/3-0.75P	4SA8/3-0.75P	0.75	1	12.4	6.3	4.5	2.6	H(m)	28	27	26	24	23	21	20	19	17	14	11	26~11
4SAm8/5-1.1P	4SA8/5-1.1P	1.1	1.5	18.0	8.3	6.1	3.5		46	45	43	40	38	36	34	32	29	24	18	43~18
4SAm8/7-1.5P	4SA8/7-1.5P	1.5	2	-	11.3	7.6	4.4		65	64	60	56	53	51	48	45	41	35	27	60~27
4SAm8/10-2.2P	4SA8/10-2.2P	2.2	3	-	15.2	10.4	6.0		94	92	87	81	77	74	70	65	59	50	38	87~38
-	4SA8/13-3P	3	4	-	-	14.1	8.1		119	117	113	106	99	95	91	85	76	64	50	113~50
-	4SA8/17-4P	4	5.5	-	-	17.0	9.8		156	153	148	140	130	124	120	113	99	84	64	148~64
-	4SA8/22-5.5P	5.5	7.5	-	-	21.8	12.8		198	195	188	177	166	158	151	140	124	104	77	188~77
-	4SA8/28-7.5P	7.5	10	-	-	30.6	18.0		250	244	236	223	209	199	190	175	153	126	93	236~93

Model		Power		Rate Current (A)				Flow										Head Range (m)	
Single-Phase	Three-Phase	kW	HP	Single-Phase		Three-Phase		m ³ /h	0	1.8	3.6	5.4	7.2	9	10.8	12.6	14.4		
110V/220V	220V/380V			110V	220V	220V	380V	l/min	0	30	60	90	120	150	180	210	240		
4SAm10/4-1.1P	4SA10/4-1.1P	1.1	1.5	18.0	8.3	6.1	3.5	H(m)	36	35	33	32	31	29	27	23	16	33~16	
4SAm10/6-1.5P	4SA10/6-1.5P	1.5	2	-	11.3	7.6	4.4		54	53	51	48	47	45	40	34	24	24	51~24
4SAm10/8-2.2P	4SA10/8-2.2P	2.2	3	-	15.2	10.4	6.0		74	73	69	65	63	60	53	43	28	69~28	
-	4SA10/10-3P	3	4	-	-	14.1	8.1		90	89	84	80	78	74	67	56	40	84~40	
-	4SA10/13-4P	4	5.5	-	-	17.0	9.8		116	114	109	105	102	98	89	75	53	109~53	
-	4SA10/17-5.5P	5.5	7.5	-	-	21.8	12.8		151	148	141	135	132	125	110	90	60	141~60	
-	4SA10/22-7.5P	7.5	10	-	-	30.6	18.0		192	189	181	174	170	161	144	119	82	181~82	

Model		Power		Rate Current (A)				Flow											Head Range (m)	
Single-Phase	Three-Phase	kW	HP	Single-Phase		Three-Phase		m ³ /h	0	1.8	3.6	5.4	7.2	9.0	10.8	12.6	14.4	16.2		18.0
110V/220V	220V/380V			110V	220V	220V	380V	l/min	0	30	60	90	120	150	180	210	240	270		300
4SAm12/5-1.5P	4SA12/5-1.5P	1.5	2	-	11.3	7.6	4.4	H(m)	48	47	46	43	40	37	34	30	27	22	16	38~24
4SAm12/7-2.2P	4SA12/7-2.2P	2.2	3	-	15.2	10.4	6.0		68	67	65	62	57	54	49	45	39	33	23	55~35
-	4SA12/9-3P	3	4	-	-	14.1	8.1		86	84	82	77	72	67	61	55	47	40	27	69~43
-	4SA12/12-4P	4	5.5	-	-	17.0	9.8		115	113	110	104	97	91	84	75	67	57	44	93~61
-	4SA12/16-5.5P	5.5	7.5	-	-	21.8	12.8		152	150	145	137	128	120	109	99	88	75	58	123~80
-	4SA12/20-7.5P	7.5	10	-	-	30.6	18.0		196	194	186	178	165	154	143	130	116	100	84	157~105

Model		Power		Rate Current (A)				Flow										Head Range (m)
Single-Phase	Three-Phase	kW	HP	Single-Phase		Three-Phase		m ³ /h	0	3	6	9	12	15	18	21	24	
110V/220V	220V/380V			110V	220V	220V	380V	l/min	0	50	100	150	200	250	300	350	400	
4SAm16/3-1.5P	4SA16/3-1.5P	1.5	2	-	11.3	7.6	4.4	H(m)	26	25	24	22	20	18	15	11	5	25~11
4SAm16/5-2.2P	4SA16/5-2.2P	2.2	3	-	15.2	10.4	6.0		43	41	40	36	31	28	24	18	8	40~18
-	4SA16/7-3P	3	4	-	-	14.1	8.1		59	58	57	54	48	42	36	27	13	58~27
-	4SA16/9-4P	4	5.5	-	-	17.0	9.8		77	76	74	70	63	55	48	37	20	75~37
-	4SA16/12-5.5P	5.5	7.5	-	-	21.8	12.8		102	100	96	89	81	72	62	48	26	98~48
-	4SA16/15-7.5P	7.5	10	-	-	30.6	18.0		130	123	116	108	98	87	75	58	31	118~58

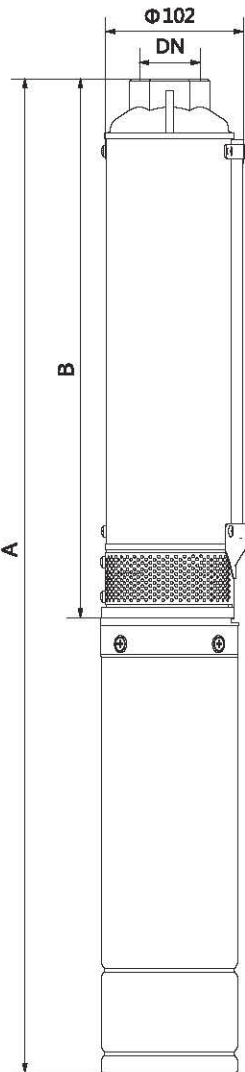
Components & Materials



No.	Part name	No.	Part name	No.	Part name
106	Inlet joint	412-2	O-ring	742	Bonnet
107	Delivery chamber	412-3	O-ring	811	Casing
143	Net cover	433	Mechanical seal	814	Stator core with winding
151	Sleeve	440-1	Anti-sand pad	818	Rotor
160-1	Bottom cover	440-2	Anti-sand seat	822-1	Lower bearing block
160-2	Cover plate	520-1	Spacer bush	822-2	Oil chamber
171	Guide vane	520-2	Spacer bush	823	Pressure regulating film
173	Guide vane cover plate	529	Shaft sleeve	825-1	Small pressing plate
210	Pump shaft	540-1	Upper spacer sleeve	825-2	Cable pressing plate
230	Impeller	540-2	Lower spacer sleeve	861	Coupling
231	Impeller string	545	Middle rubber bearing	903	Vent cock
271	Sand shaking sleeve	550-1	Adjusting washer	914	Hexagon socket set screw
321-1	Deep groove ball bearing	550-2	Adjusting washer	932	Retaining ring
321-2	Angular contact bearing	552	Wave spring	955	Dust cover
382	Middle bearing block	554	Flat washer		
412-1	O-ring	560	Locating pin		

Dimensions & Weight

Model		Pipe Connection (DN)	Dim. (mm)			N.W. (kg)		
Single-phase	Three-phase		B	A Single-Phase	Three-phase	Body(kg)	Motor(kg)	
							Single-phase	Three-phase
4SAm2/5-0.37P	-	G1¼ NPT1¼	319	620	-	2.4	7.7	-
4SAm2/7-0.55P	-		371	692	-	2.8	8.7	-
4SAm2/9-0.75P	4SA2/9-0.75P		421	767	757	3.1	9.9	9.7
4SAm2/13-1.1P	4SA2/13-1.1P		519	900	890	3.9	11.5	10.3
4SAm2/17-1.5P	4SA2/17-1.5P		619	1045	1000	4.7	13.6	10.7
4SAm2/24-2.2P	4SA2/24-2.2P		828	1314	1264	6.2	16.7	13.5
-	4SA2/32-3P		1062	-	1560	9.1	-	16.6
-	4SA2/40-4P		1295	-	1848	11.2	-	19.2



Model		Pipe Connection (DN)	Dim. (mm)			N.W. (kg)		
Single-phase	Three-phase		B	A Single-Phase	Three-phase	Body(kg)	Motor(kg)	
							Single-phase	Three-phase
4SAm3/3-0.37P	-	G1¼ NPT1¼	275	576	-	2.0	7.7	-
4SAm3/5-0.55P	-		327	648	-	2.4	8.7	-
4SAm3/7-0.75P	4SA3/7-0.75P		379	725	715	2.8	9.9	9.7
4SAm3/9-1.1P	4SA3/9-1.1P		431	812	802	3.1	11.5	10.3
4SAm3/12-1.5P	4SA3/12-1.5P		509	935	890	3.7	13.6	10.7
4SAm3/18-2.2P	4SA3/18-2.2P		665	1151	1101	4.9	16.7	13.5
-	4SA3/24-3P		891	-	1389	6.8	-	16.6
-	4SA3/32-4P		1100	-	1653	9.0	-	19.2
-	4SA3/40-5.5P		1343	-	1971	11.0	-	22.5

Model		Pipe Connection (DN)	Dim. (mm)			N.W. (kg)		
Single-phase	Three-phase		B	A Single-Phase	Three-phase	Body(kg)	Motor(kg)	
							Single-phase	Three-phase
4SAm4/3-0.37P	-	G1¼ NPT1¼	284	585	-	2.0	7.7	-
4SAm4/4-0.55P	-		313	634	-	2.2	8.7	-
4SAm4/6-0.75P	4SA4/6-0.75P		371	717	707	2.6	9.9	9.7
4SAm4/8-1.1P	4SA4/8-1.1P		429	810	800	3.0	11.5	10.3
4SAm4/11-1.5P	4SA4/11-1.5P		516	942	897	3.6	13.6	10.7
4SAm4/16-2.2P	4SA4/16-2.2P		731	1217	1167	5.0	16.7	13.5
-	4SA4/22-3P		905	-	1403	6.9	-	16.6
-	4SA4/28-4P		1114	-	1667	8.2	-	19.2
-	4SA4/35-5.5P		1318	-	1946	10.1	-	22.5

Model		Pipe Connection (DN)	Dim. (mm)			N.W. (kg)		
Single-phase	Three-phase		B	A Single-Phase	Three-phase	Body(kg)	Motor(kg)	
							Single-phase	Three-phase
4SAm6/3-0.55P	-	G1½ NPT1½	295	616	-	2.1	8.7	-
4SAm6/4-0.75P	4SA6/4-0.75P		327	673	663	2.3	9.9	9.7
4SAm6/6-1.1P	4SA6/6-1.1P		393	774	764	2.7	11.5	10.3
4SAm6/8-1.5P	4SA6/8-1.5P		459	885	840	3.2	13.6	10.7
4SAm6/12-2.2P	4SA6/12-2.2P		625	1111	1061	4.2	16.7	13.5
-	4SA6/16-3P		758	-	1256	5.3	-	16.6
-	4SA6/21-4P		956	-	1509	6.7	-	19.2
-	4SA6/27-5.5P		1153	-	1781	8.1	-	22.5
-	4SA6/35-7.5P		1451	-	2179	11.2	-	28.9

Model		Pipe Connection (DN)	Dim. (mm)			N.W.(kg)		
Single-phase	Three-phase		B	A Single-Phase	Three-phase	Body(kg)	Motor(kg)	
							Single-phase	Three-phase
4SAm8/3-0.75P	4SA8/3-0.75P	G2 NPT2	311	657	647	2.2	9.9	9.7
4SAm8/5-1.1P	4SA8/5-1.1P		387	768	758	2.6	11.5	10.3
4SAm8/7-1.5P	4SA8/7-1.5P		463	889	844	3.1	13.6	10.7
4SAm8/10-2.2P	4SA8/10-2.2P		612	1098	1048	4.1	16.7	13.5
-	4SA8/13-3P		726	-	1224	4.9	-	16.6
-	4SA8/17-4P		913	-	1466	6.2	-	19.2
-	4SA8/22-5.5P		1103	-	1731	7.5	-	22.5
-	4SA8/28-7.5P		1366	-	2094	10.6	-	28.9

Model		Pipe Connection (DN)	Dim. (mm)			N.W.(kg)		
Single-phase	Three-phase		B	A Single-Phase	Three-phase	Body(kg)	Motor(kg)	
							Single-phase	Three-phase
4SAm10/4-1.1P	4SA10/4-1.1P	G2 NPT2	350	731	721	2.4	11.5	10.3
4SAm10/6-1.5P	4SA10/6-1.5P		425	851	806	2.9	13.6	10.7
4SAm10/8-2.2P	4SA10/8-2.2P		536	1022	972	3.6	16.7	13.5
-	4SA10/10-3P		612	-	1110	4.2	-	16.6
-	4SA10/13-4P		726	-	1279	4.9	-	19.2
-	4SA10/17-5.5P		913	-	1541	6.2	-	22.5
-	4SA10/22-7.5P		1103	-	1831	7.5	-	28.9

Model		Pipe Connection (DN)	Dim. (mm)			N.W.(kg)		
Single-phase	Three-phase		B	A Single-Phase	Three-phase	Body(kg)	Motor(kg)	
							Single-phase	Three-phase
4SAm12/5-1.5P	4SA12/5-1.5P	G2 NPT2	496	922	877	3.7	13.6	10.7
4SAm12/7-2.2P	4SA12/7-2.2P		593	1079	1029	4.4	16.7	13.5
-	4SA12/9-3P		690	-	1188	5.3	-	16.6
-	4SA12/12-4P		893	-	1446	6.6	-	19.2
-	4SA12/16-5.5P		1087	-	1715	8.3	-	22.5
-	4SA12/20-7.5P		1338	-	2066	10.6	-	28.9

Model		Pipe Connection (DN)	Dim. (mm)			N.W.(kg)		
Single-phase	Three-phase		B	A Single-Phase	Three-phase	Body(kg)	Motor(kg)	
							Single-phase	Three-phase
4SAm16/3-1.5P	4SA16/3-1.5P	G2 NPT2	475	922	877	3.3	13.6	10.7
4SAm16/5-2.2P	4SA16/5-2.2P		625	1079	1029	4.4	16.7	13.5
-	4SA16/7-3P		777	-	1188	5.6	-	16.6
-	4SA16/9-4P		928	-	1446	6.7	-	19.2
-	4SA16/12-5.5P		1156	-	1715	8.2	-	22.5
-	4SA16/15-7.5P		1383	-	2066	10.2	-	28.9

Packing Size & Weight

Model		Dim. (mm)				G.W.(kg)		20"Loading Qty.(pcs)		
Single-phase	Three-phase	Motor(L×W×H)		Body (L×W×H)	Pump(L×W×H)		Single-phase	Three-phase	Single-phase	Three-phase
		Single-phase	Three-phase		Single-phase	Three-phase				
4SAm2/5-0.37P	-	-	-	-	935×110×185	-	10.8	-	1390	-
4SAm2/7-0.55P	-	-	-	-	1020×110×185	-	12.3	-	1300	-
4SAm2/9-0.75P	4SA2/9-0.75P	-	-	-	1075×110×185	850×125×125	13.8	13.5	1200	1500
4SAm2/13-1.1P	4SA2/13-1.1P	-	-	-	1220×110×185	980×125×125	16.3	15.0	1080	1300
4SAm2/17-1.5P	4SA2/17-1.5P	-	-	-	1360×110×185	1100×125×125	19.3	16.3	960	1150
4SAm2/24-2.2P	4SA2/24-2.2P	-	-	-	1615×110×185	1360×125×125	24.1	20.7	770	920
-	4SA2/32-3P	-	645×125×125	1180×125×125	-	-	-	M:17.1 B:10	-	910
-	4SA2/40-4P	-	690×125×125	1415×125×125	-	-	-	M:19.7 B:12.2	-	780

Model		Dim. (mm)				G.W.(kg)		20"Loading Qty.(pcs)		
Single-phase	Three-phase	Motor(L×W×H)		Body (L×W×H)	Pump(L×W×H)		Single-phase	Three-phase	Single-phase	Three-phase
		Single-phase	Three-phase		Single-phase	Three-phase				
4SAm3/3-0.37P	-	-	-	-	890×110×185	-	10.4	-	1570	-
4SAm3/5-0.55P	-	-	-	-	955×110×185	-	11.9	-	1350	-
4SAm3/7-0.75P	4SA3/7-0.75P	-	-	-	1020×110×185	810×125×125	13.3	13.0	1230	1570
4SAm3/9-1.1P	4SA3/9-1.1P	-	-	-	1130×110×185	935×125×125	15.5	14.1	1170	1420
4SAm3/12-1.5P	4SA3/12-1.5P	-	-	-	1255×110×185	1020×125×125	18.3	15.2	1050	1300
4SAm3/18-2.2P	4SA3/18-2.2P	-	-	-	1500×110×185	1255×125×125	22.7	19.3	870	1050
-	4SA3/24-3P	-	645×125×125	1020×125×125	-	-	-	M:17.1 B:7.5	-	1020
-	4SA3/32-4P	-	690×125×125	1210×125×125	-	-	-	M:19.7 B:9.9	-	870
-	4SA3/40-5.5P	-	780×125×125	1460×125×125	-	-	-	M:23.1 B:12	-	730

Model		Dim. (mm)				G.W.(kg)		20"Loading Qty.(pcs)		
Single-phase	Three-phase	Motor(L×W×H)		Body (L×W×H)	Pump(L×W×H)		Single-phase	Three-phase	Single-phase	Three-phase
		Single-phase	Three-phase		Single-phase	Three-phase				
4SAm4/3-0.37	-	-	-	-	890×110×185	-	10.4	-	1420	-
4SAm4/4-0.55	-	-	-	-	935×110×185	-	11.6	-	1350	-
4SAm4/6-0.75	4SA4/6-0.75	-	-	-	1020×110×185	810×125×125	13.3	13.0	1300	1570
4SAm4/8-1.1	4SA4/8-1.1	-	-	-	1130×110×185	890×125×125	15.4	14.0	1170	1420
4SAm4/11-1.5	4SA4/11-1.5	-	-	-	1255×110×185	1020×125×125	18.2	15.1	1050	1300
4SAm4/16-2.2	4SA4/16-2.2	-	-	-	1550×110×185	1075×125×125	22.9	19.3	840	960
-	4SA4/22-3	-	645×125×125	1020×125×125	-	-	-	M:17.1 B:7.6	-	1000
-	4SA4/28-4	-	690×125×125	1210×125×125	-	-	-	M:19.7 B:9.1	-	880
-	4SA4/35-5.5	-	780×125×125	1415×125×125	-	-	-	M:23.1 B:11.1	-	750

Model		Dim. (mm)				G.W.(kg)		20"Loading Qty.(pcs)		
Single-phase	Three-phase	Motor(L×W×H)		Body (L×W×H)	Pump(L×W×H)		Single-phase	Three-phase	Single-phase	Three-phase
		Single-phase	Three-phase		Single-phase	Three-phase				
4SAm6/3-0.55P	-	-	-	-	810×125×125	-	11.5	-	1420	-
4SAm6/4-0.75P	4SA6/4-0.75P	-	-	-	850×125×125	810×125×125	13.0	12.7	1350	1650
4SAm6/6-1.1P	4SA6/6-1.1P	-	-	-	935×125×125	890×125×125	15	13.8	1230	1500
4SAm6/8-1.5P	4SA6/8-1.5P	-	-	-	1045×125×125	935×125×125	17.8	14.7	110	1350
4SAm6/12-2.2P	4SA6/12-2.2P	-	-	-	1310×125×125	1180×125×125	22.0	18.6	920	1100
-	4SA6/16-3P	-	645×125×125	850×125×125	-	-	-	M:17.1 B:5.9	-	1150
-	4SA6/21-4P	-	690×125×125	1075×125×125	-	-	-	M:19.7 B:7.5	-	970
-	4SA6/27-5.5P	-	780×125×125	1255×125×125	-	-	-	M:23.1 B:9	-	830
-	4SA6/35-7.5P	-	920×125×125	1550×125×125	-	-	-	M:29.6 B:12.3	-	700

Model		Dim. (mm)					G.W.(kg)		20"Loading Qty.(pcs)	
Single-phase	Three-phase	Motor(LxWxH)		Body (LxWxH)	Pump(LxWxH)		Single-phase	Three-phase	Single-phase	Three-phase
		Single-phase	Three-phase		Single-phase	Three-phase				
4SAm8/3-0.75P	4SA8/3-0.75P	-	-	-	955x110x185	730x125x125	12.9	12.5	1350	1710
4SAm8/5-1.1P	4SA8/5-1.1P	-	-	-	1075x110x185	850x125x125	15.0	13.7	1200	1500
4SAm8/7-1.5P	4SA8/7-1.5P	-	-	-	1220x110x185	935x125x125	17.7	14.6	1050	1350
4SAm8/10-2.2P	4SA8/10-2.2P	-	-	-	1415x110x185	1180x125x125	21.9	18.5	920	1120
-	4SA8/13-3P	-	645x125x125	850x125x125	-	-	-	M:17.1 B:5.5	-	1110
-	4SA8/17-4P	-	690x125x125	1020x125x125	-	-	-	M:19.7 B:6.9	-	970
-	4SA8/22-5.5P	-	780x125x125	1210x125x125	-	-	-	M:23.1 B:8.4	-	830
-	4SA8/28-7.5P	-	920x125x125	1460x125x125	-	-	-	M:29.6 B:11.6	-	700

Model		Dim. (mm)					G.W.(kg)		20"Loading Qty.(pcs)	
Single-phase	Three-phase	Motor(LxWxH)		Body (LxWxH)	Pump(LxWxH)		Single-phase	Three-phase	Single-phase	Three-phase
		Single-phase	Three-phase		Single-phase	Three-phase				
4SAm10/4-1.1P	4SA10/4-1.1P	-	-	-	1075x110x185	810x125x125	14.7	13.4	1230	1570
4SAm10/6-1.5P	4SA10/6-1.5P	-	-	-	1150x110x185	890x125x125	17.4	14.3	1120	1420
4SAm10/8-2.2P	4SA10/8-2.2P	-	-	-	1360x110x185	1075x125x125	21.3	17.9	960	1170
-	4SA10/10-3P	-	645x125x125	730x125x125	-	-	-	M:17.1 B:4.8	-	1210
-	4SA10/13-4P	-	690x125x125	850x125x125	-	-	-	M:19.7 B:5.5	-	1100
-	4SA10/17-5.5P	-	780x125x125	1020x125x125	-	-	-	M:23.1 B:6.9	-	920
-	4SA10/22-7.5P	-	920x125x125	1210x125x125	-	-	-	M:29.6 B:8.4	-	790

Model		Dim. (mm)					G.W.(kg)		20"Loading Qty.(pcs)	
Single-phase	Three-phase	Motor(LxWxH)		Body (LxWxH)	Pump(LxWxH)		Single-phase	Three-phase	Single-phase	Three-phase
		Single-phase	Three-phase		Single-phase	Three-phase				
4SAm12/5-1.5P	4SA12/5-1.5P	-	-	-	1220x110x185	980x125x125	18.3	15.2	1110	1390
4SAm12/7-2.2P	4SA12/7-2.2P	-	-	-	1415x110x185	1130x125x125	22.3	18.9	960	1200
-	4SA12/9-3P	-	645x125x125	810x125x125	-	-	-	M:17.1 B:6.1	-	1210
-	4SA12/12-4P	-	690x125x125	1020x125x125	-	-	-	M:19.7 B:7.5	-	1030
-	4SA12/16-5.5P	-	780x125x125	1180x125x125	-	-	-	M:23.1 B:9.2	-	900
-	4SA12/20-7.5P	-	920x125x125	1460x125x125	-	-	-	M:29.6 B:11.7	-	750

Model		Dim. (mm)					G.W.(kg)		20"Loading Qty.(pcs)	
Single-phase	Three-phase	Motor(LxWxH)		Body (LxWxH)	Pump(LxWxH)		Single-phase	Three-phase	Single-phase	Three-phase
		Single-phase	Three-phase		Single-phase	Three-phase				
4SAm16/3-1.5P	4SA16/3-1.5P	-	-	-	1220x110x185	955x125x125	17.8	14.8	1000	1300
4SAm16/5-2.2P	4SA16/5-2.2P	-	-	-	1415x110x185	1180x125x125	22.2	19.0	920	1050
-	4SA16/7-3P	-	645x125x125	890x125x125	-	-	-	M:17.1 B:6.3	-	1080
-	4SA16/9-4P	-	690x125x125	1020x125x125	-	-	-	M:19.7 B:7.4	-	970
-	4SA16/12-5.5P	-	780x125x125	1255x125x125	-	-	-	M:23.1 B:9.1	-	810
-	4SA16/15-7.5P	-	920x125x125	1500x125x125	-	-	-	M:29.6 B:11.3	-	690

