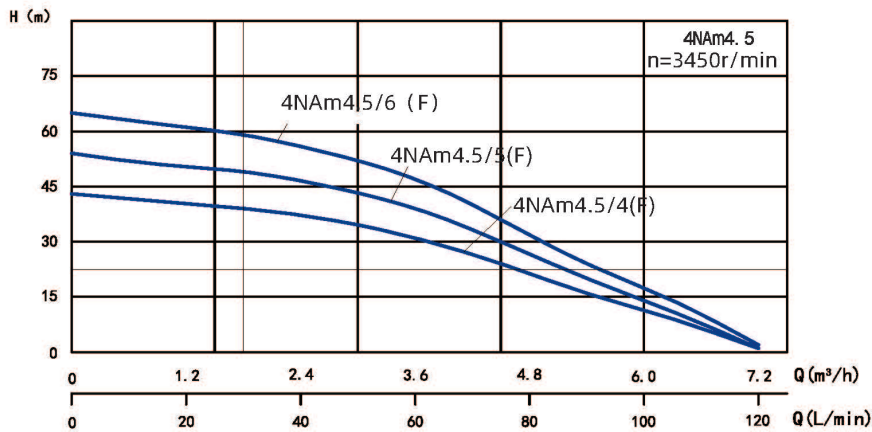
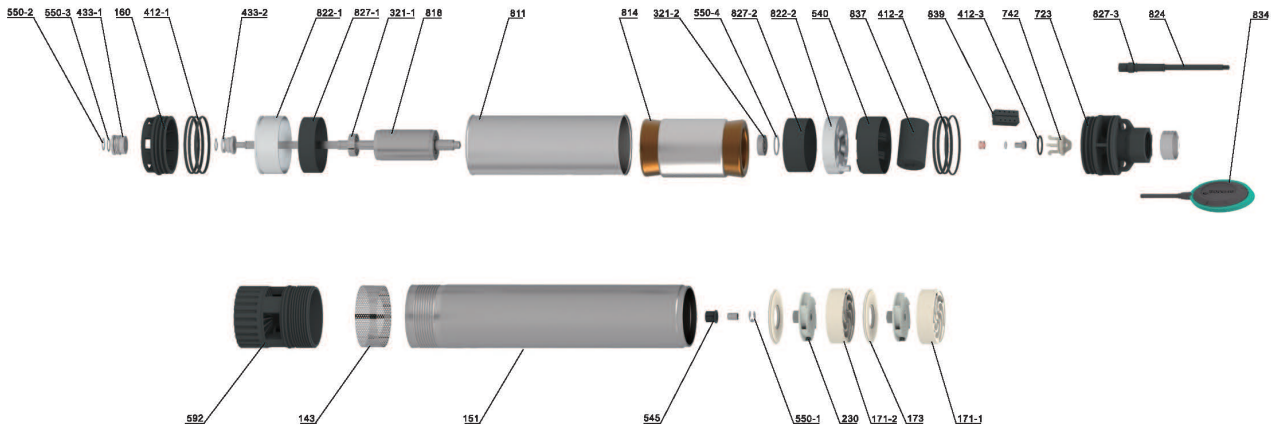


Performance Curve



Model	Power		Rate Current (A)		Flow										Head Range (m)	
	Single-phase	kW	HP	110V	220V	m ³ /h	0	0.9	1.8	2.7	3.6	4.5	5.4	6.3		7.2
						110V	220V	l/min	0	15	30	45	60	75		90
4NAm4.5/4	0.37	0.5	9.9	4.4	H(m)	44	41	39	36	31	24	16	9	1	40~18	
4NAm4.5/5	0.55	0.75	11.4	5.6	H(m)	55	51	49	45	39	30	20	11	1	50~22	
4NAm4.5/6	0.75	1	13.2	6.8	H(m)	66	62	59	54	47	36	24	14	1	60~27	

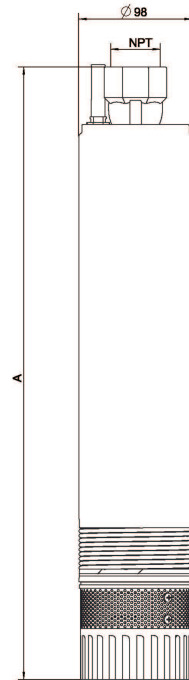
Components & Materials



No.	Part name	No.	Part name	No.	Part name
143	Net cover	540	Upper spacer sleeve	814	Stator core with winding
151	Sleeve	545	Middle rubber bearing	818	Rotor
160	Chassis	550-1	Adjusting washer	822-1	Lower bearing block
171-1	Guide vane	550-2	Adjusting washer	822-2	Oil chamber
171-2	Guide vane	550-3	Flat washer	824	Cable
173	Guide vane cover plate	550-4	Wave spring	827-1	Insulating paper
230	Impeller	433-1	Mechanical seal	827-2	Insulating paper
321-1	Deep groove ball bearing	433-2	Mechanical seal	827-3	Cable sheath
321-2	Angular contact bearing	592	Base	834	Float switch with cable
412-1	O-ring	723	Top cover	837	Capacitor
412-2	O-ring	742	Bonnet	839	Terminals
412-3	O-ring	811	Casing		

Dimensions & Weight

Model	Pipe Connection (DN)	Dim. (mm)	N.W.(kg)
Single-phase		A(Single-phase)	Body(kg)
4NAm4.5/4	G1¼ NPT1¼	531	6.9
4NAm4.5/5		581	7.6
4NAm4.5/6		635	8.7



Packing Size & Weight

Model	Dim. (mm) Pump(L×W×H) Single-phase	Dim. (mm)	N.W.(kg)
Single-phase		A(Single-phase)	Body(kg)
4NAm4.5/4	675×145×150	7.9	1860
4NAm4.5/5	725×145×150	8.6	1750
4NAm4.5/6	780×145×150	9.7	1590

