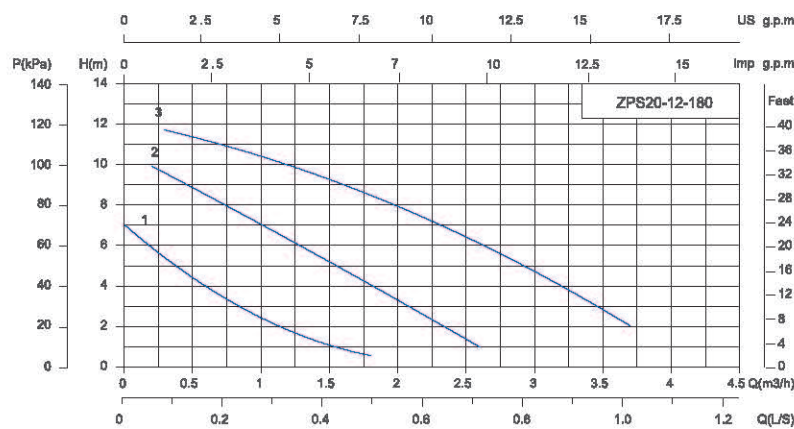
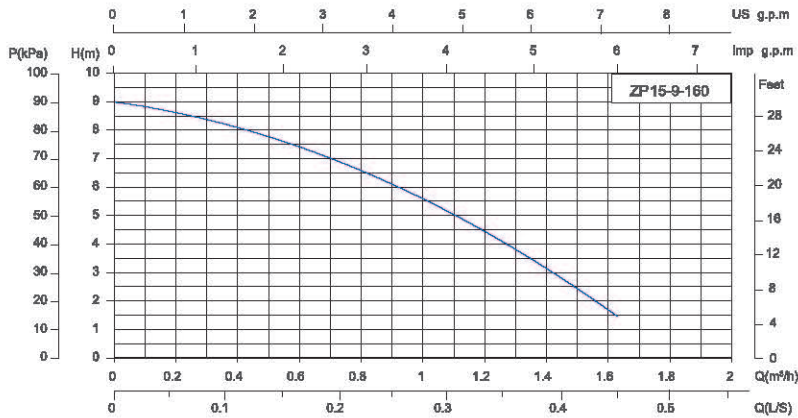
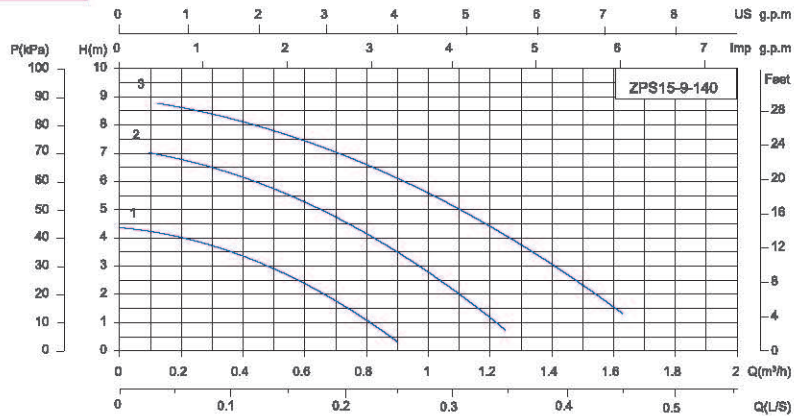
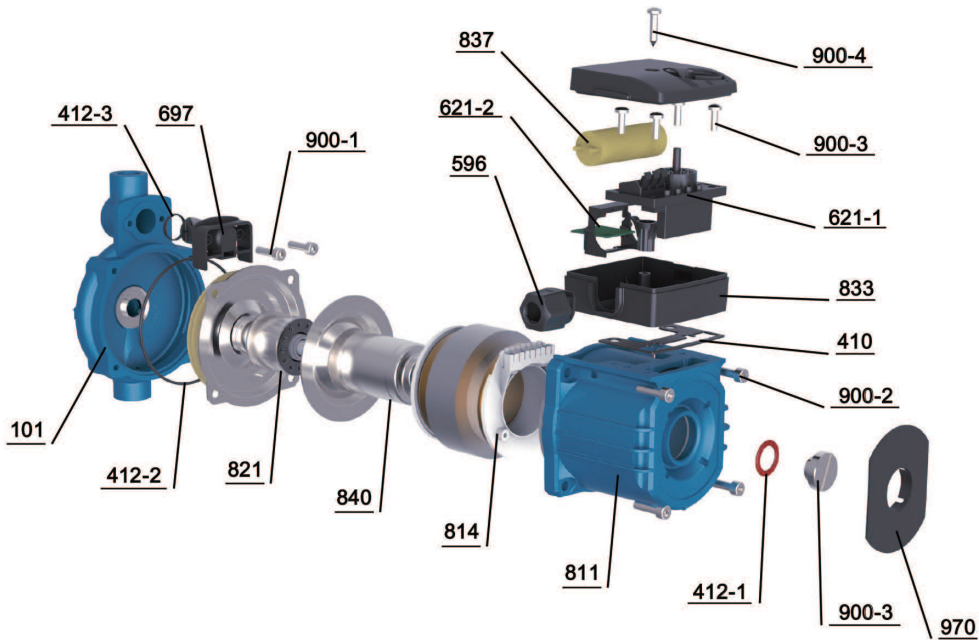


Performance Curve



Model	Speed	Input power P1(W)	Current(A)		Pipe Distance (mm)	Max. Head (m)	Whole Lift (m)	Max. flow (m³/h)	Inter Box		Outer Box			20" Loading Qty (pcs)
			220V 60HZ	127V 60HZ					G.W. (kg)	Dim.(LxWxH)	PCS/CTN	Dim (LxWxH)	G.W. (kg)	
ZP15-9-160	-	120	0.48	0.95	3	10	0~9	1.6	2.8	180x120x135	8	380x260x290	23	5880
ZPS15-9-140	3	120	0.48	0.95	3	10	0~9	1.6	2.8	180x120x135	8	380x260x290	23	5880
ZPS15-9-140	2	85	0.38	0.66	3	10	0~9	1.6	2.8	180x120x135	8	380x260x290	23	5880
ZPS15-9-140	1	60	0.26	0.45	3	10	0~9	1.6	2.8	180x120x135	8	380x260x290	23	5880
ZPS20-12-180	3	245	1.04	1.80	6	20	0~12	3.5	5	200x160x180	4	420x340x200	21	3200
ZPS20-12-180	2	210	0.92	1.60	6	20	0~12	3.5	5	200x160x180	4	420x340x200	21	3200
ZPS20-12-180	1	140	0.63	1.10	6	20	0~12	3.5	5	200x160x180	4	420x340x200	21	3200

Components & Materials



No.	Component	No.	Component
101	Pump body	412-1	O-ring
410	Rubber mat	412-2	O-ring
596	Cable lock	412-3	
697	Flow switch	621-1	Wiring board
811	Casing	621-2	Control panel
814	Stator core with winding	900-1	Hexagon socket head cap screw
821	Rotor (part)	900-2	Hexagon socket head cap screw
833	Junction box	900-3	Vent cock
837	Running capacitor	900-3	Cross recessed pan head screw
840	Can	900-4	Cross recessed self-tapping screw
970	Nameplate		

Dimensions

Model	Dim.(mm)					Unions Or Flange	N.w. (kg)
	A	B	C	D	E		
ZP15-9-160	125	102	160	G¾"	105	G¾" to G½"	2.6
ZP515-9-140	125	102	140	G¾"	105	G¾" to G½"	2.6
ZPS20-12-180	156	135	180	G1"	145	G1" to G¾"	4.6

