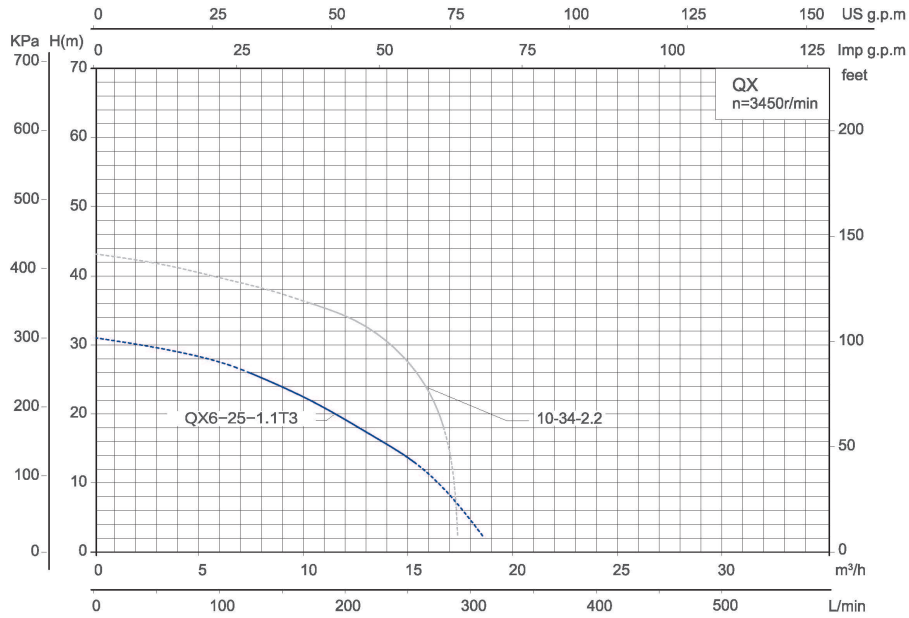
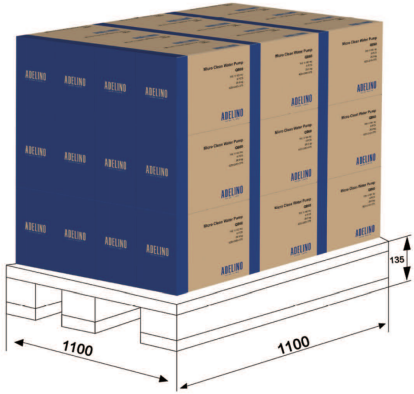


Performance Curve

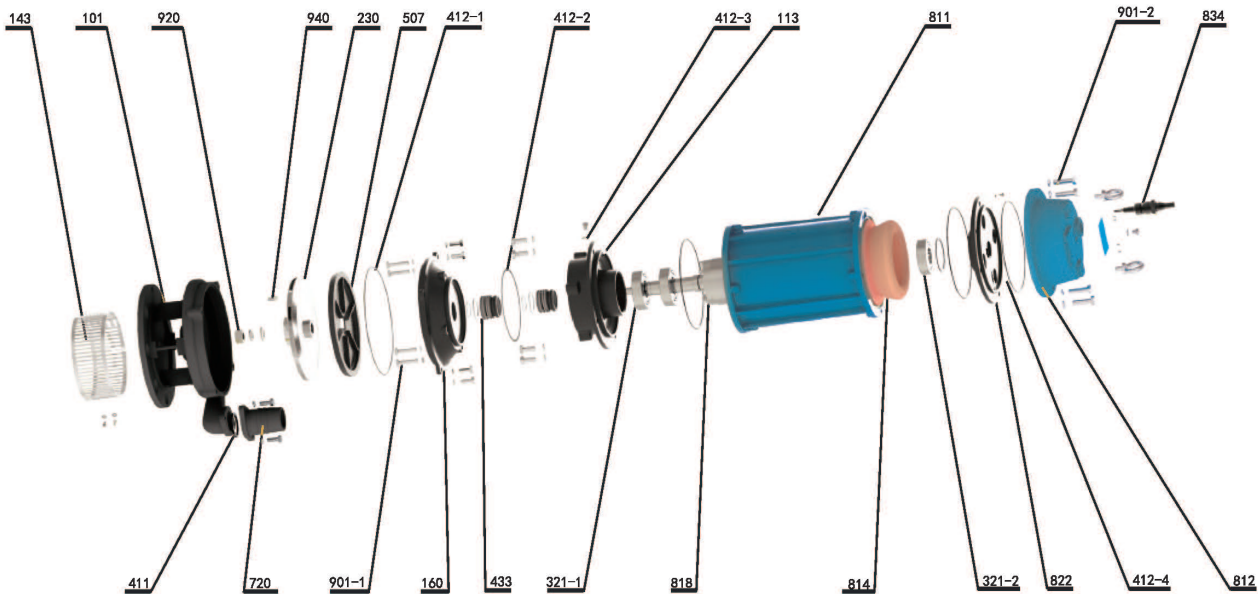


Model	Power		Rate Current (A)	Max. Flow (m³/h)	Max. Head (m)	Head Range (m)	Cable line (m)	Dim.mm (LxBxH)	G.W. (kg)	20' Loading Qty. (pcs)
	kW	HP								
QX6-25-1.1T3(220V/440V 60Hz)	1.1	1.5	4.7/2.4	19	31	13~26	4x1-15	480x285x220	20	560
QX10-34-2.2(220V/440V 60Hz)	2.2	3	8.8/4.4	18	41	18~36	3x2+1x1-15	575x250x323	39	616

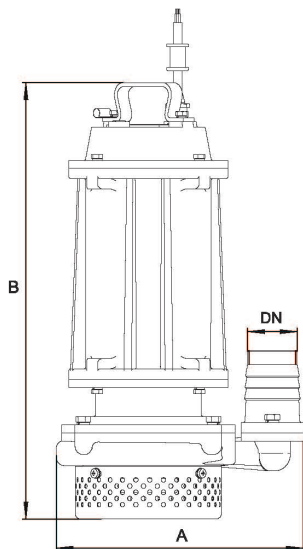
Centrifugal pumps are not recommended to be used less than the lift range.



Components & Materials



No.	Part name	No.	Part name
101	Pump body	550	Mechanical seal ring
113	Lower bearing block	720	Outlet joint
143	Net cover	811	Casing
160	Oil chamber cover	812	Head cover
230	Impeller	814	Stator core with winding
321-1	Deep groove ball bearing	818	Rotor
321-2	Deep groove ball bearing	822	Upper bearing block
411	Rubber washer	834	Cable connection sleeve
412-1	O-ring	901-1	Hexagon head bolt
412-2	O-ring	901-2	Hexagon head bolt
412-3	O-ring	920	Hexagon nut - Style 1
412-4	O-ring	940	Ordinary flat type
433	Mechanical seal		
507	Water baffle		



Dimensions & Weight

Model	Dim.(mm)			N.W. (kg)
	A	B	DN	
QX6-25-1.1T3(220V/440V 60Hz)	240	427	51	19
QX10-34-2.2(220V/440V 60Hz)	282	495	51	35