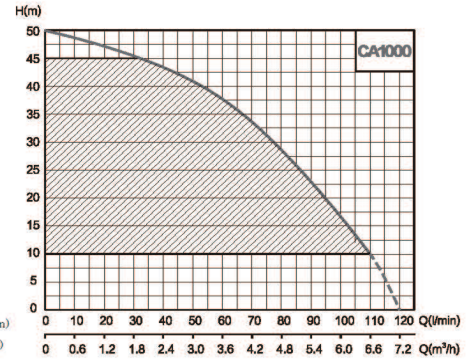
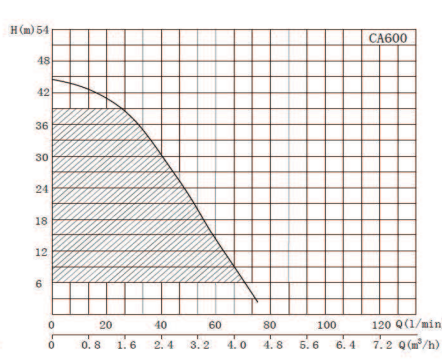
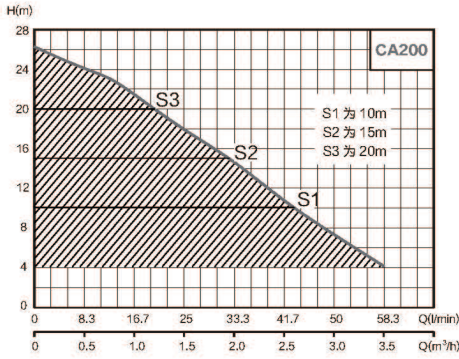


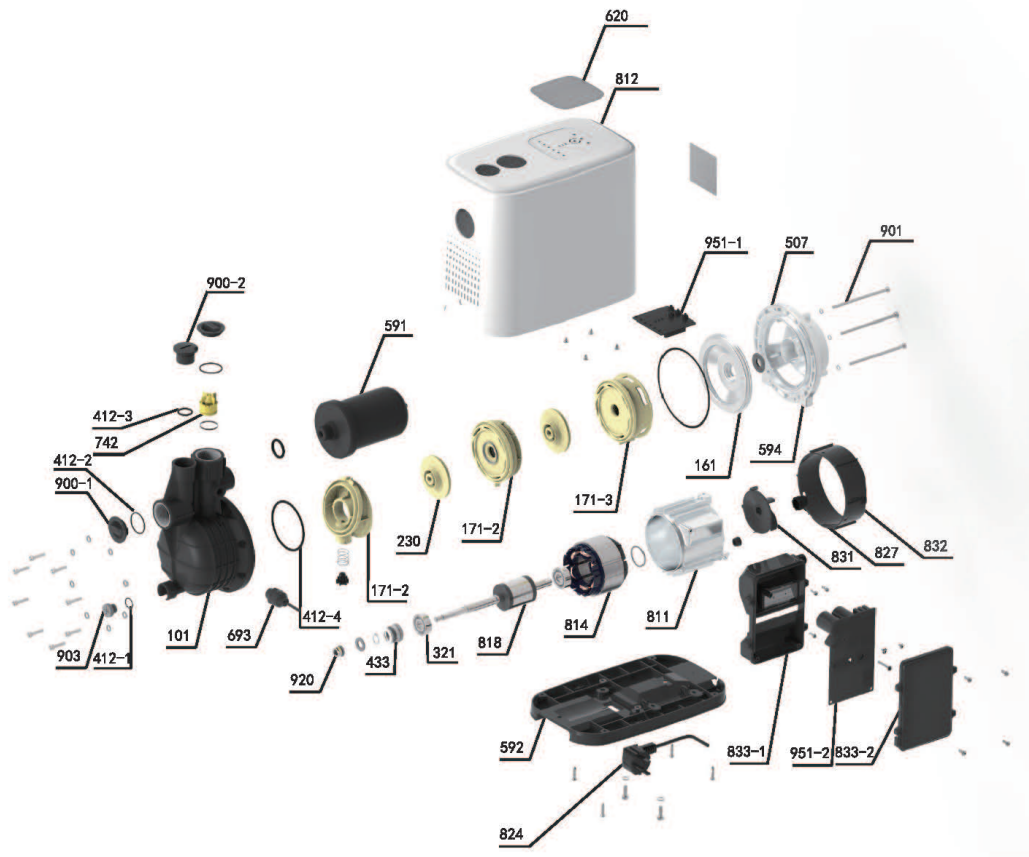
## Performance Curve



Model	Power		Max. Flow (m³/h)	Max. Head (m)	Head Range (m)	Max. Suction (m)
	kW	HP				
CA200	0.2	0.27	3.5	25	10-25	5
CA600	0.6	0.82	6	45	0 ~ 40	6
CA1000	1.0	1.36	7.2	50	18-45	6

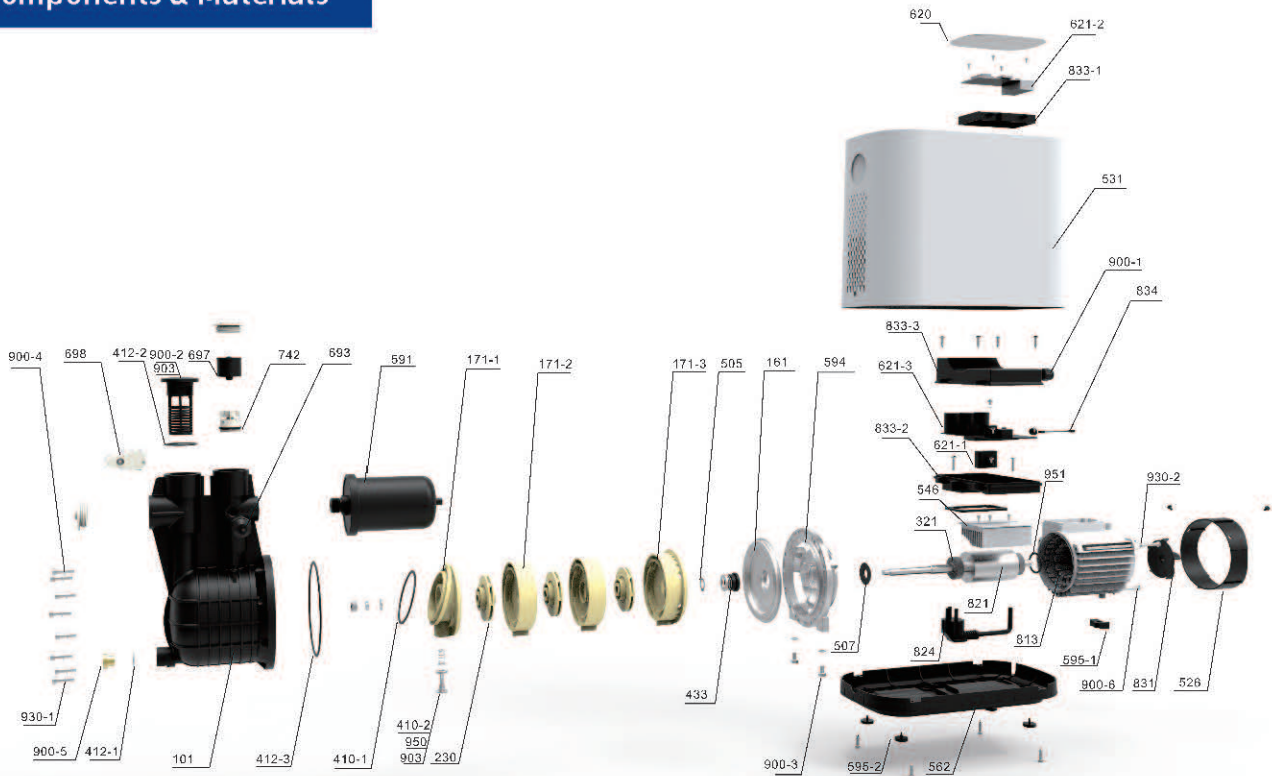
Model	CA200 (115V)	CA200 (220V)	CA600 (220V)	CA1000 (115V)	CA1000 (220Vz)
Capacitor	/	/	/	/	/
End cap Bearing	6201-2RZ	6201-2RZ	6202-2RZ	6202-2RZ	6202-2RZ
Connection Part Bearing	6201-2RZ	6201-2RZ	6202-2RZ	6202-2RZ	6202-2RZ
Motor Shaft	420#	420#	20Cr13	420#	420#
Mechanical Seal	108-12/21&S:A(RC)&Static ring26	108-12/21&S:A(RC)&Static ring26	118-14/21 static ring 28&S: K (PC)	108-14/20.5&Without mechanical sealing ring&S:K(RC)	108-14/20.5&Without mechanical sealing ring&S:K(RC)
Motor Case	Aluminum shell	Aluminum shell	Aluminum	304#	304#
Coupling	aluminum	aluminum	Cast Iron	plastic	plastic
Pump Body	plastic	plastic	Plastic patrs	plastic	plastic
Impeller	plastic	plastic	Plastic patrs	plastic	plastic

## Components & Materials



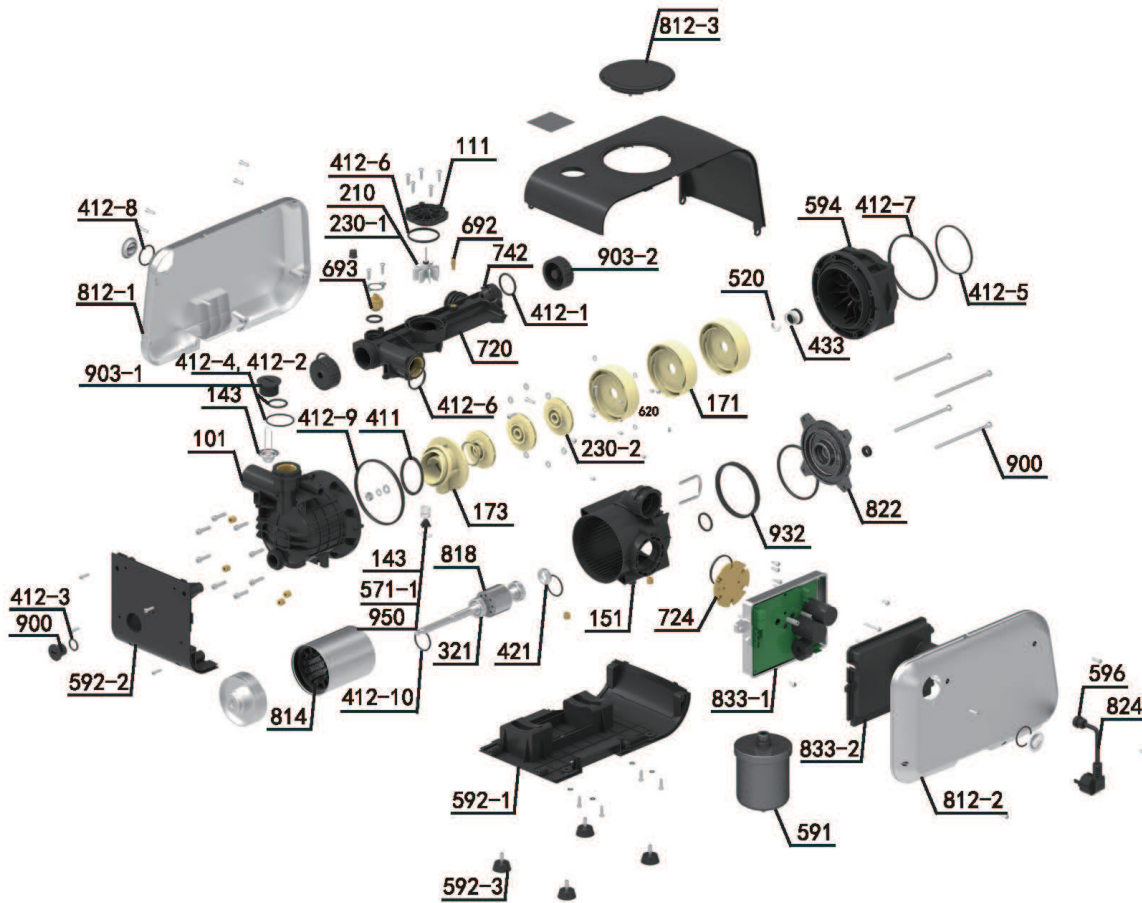
No.	Part name	No.	Part name	No.	Part name
101	Pump body	507	Water retaining ring	827	Cable sheath
161	Pump cover	591	pressure tank	831	fan
171-1	Guide vane cover	592	Base	832	Fan cover
171-2	Guide vane	594	Coupling	833-1	Junction Box
171-3	Last stage guide vane	620	Panel screen	833-2	Junction box cover
230	impeller	693	Pressure Sensor	900-1	Dust cover
321	Deep groove ball bearing	742	Check valve	900-2	Water cock
412-1	○ -shaped sealing ring	811	chassis	901	Hexagon head bolts
412-2	○ -shaped sealing ring	812	Enclosure	903	Water cock
412-3	○ -shaped sealing ring	814	Stator core with windings	951-1	display board
412-4	○ -shaped sealing ring	818	Rotor	951-2	Control panel
433	Machinery Seal	824	Cable		

## Components & Materials



No.	Part name	No.	Part name	No.	Part name
101	Pump body	742	Check valve	595-1	Rubber pads for footing
161	Pump cove	813	Stator	595-2	Rubber pads for footing
230	Impeller	821	Rotor	621-1	Wire holder
321	Deep groove ball bearings	824	Cable	621-2	Driver board
433	Mechanical Seal	831	Fan	621-3	Control panel
505	Circlip for shaft	834	Signal cable (routing cable)	833-1	Junction box (panel box)
507	Water retaining ring	903	Backflow hole plug	833-2	Control box
526	Fan cover	950	Spring	833-3	Control box cover
531	Housing	951	Wavy spring	900-1	Junction box nut
546	Heat block	171-1	(Final class) guide vane	900-2	Water filling cock
562	Base	171-2	Guide vane	900-3	Hexagon head bolts fully threaded
591	Pressure tank	171-3	(Front) guide vane cover	900-4	Hexagon socket head screws
594	Coupling	410-1	Rubber gaskets	900-5	Vent cock
620	Touchscreen	410-2	Rubber pads	900-6	Hexagon-head bolt
693	Pressure sensor	412-1	O-ring seal	930-1	Spring gasket
697	Tube	412-2	O-ring seal	930-2	Spring gasket
698	Hall sensor	412-3	O-ring seal		

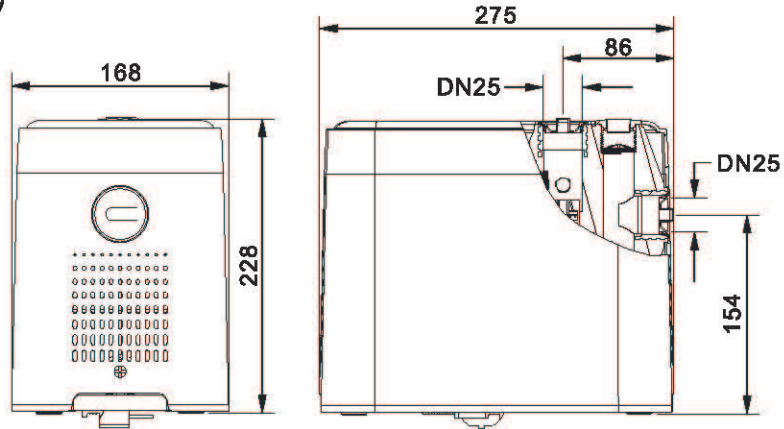
## Components & Materials



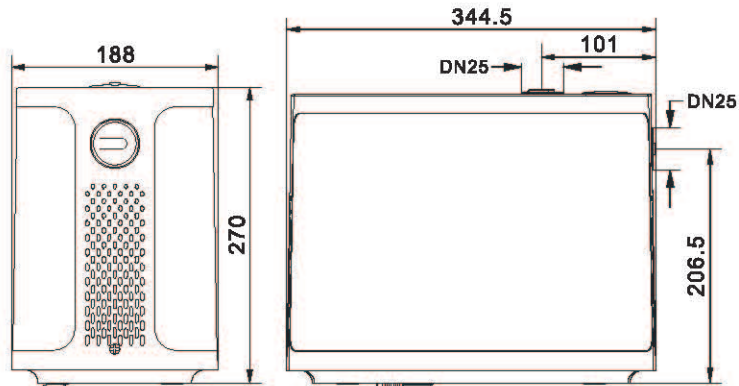
No.	Part name	No.	Part name	No.	Part name	No.	Part name	No.	Part name
812-1	Left housing	955-1	Panel sticker	143	Filter	151	Water-flowing pump body	724	Radiating plate
550-8	Pressure sensor pressing plate	620	Display panel assembly	101	Pump body	591-1	Large insert spring	833-1	Control box assembly
111	Flowmeter cover plate assembly	812-3	Panel cover	900-2	Drain cock	822	Rear end cover	833-2	Control box cover
210	Turbine shaft	594	Connector	592-2	Side base	827-2	Lead wire sheath	812-2	Right housing
230-1	Turbine assembly	171	Guide vane	411	Rubber washer	932	Backing ring	827	Cable
692	Temperature sensor	230-2	Impeller	903-3	Return hole plug	818	Rotor	591	Pressure tank
693	Pressure sensor	720	Outlet pipe fitting	950-1	Spring	814	Stator	592-3	Foot
903-2	Plug	903-1	Vent cock	591-2	Small insert spring	592-1	Base		

**Packing Size & Weight**

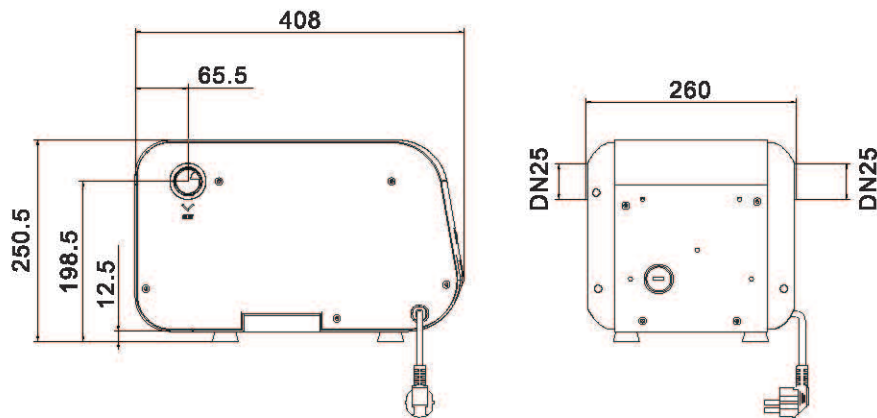
CA200(R)



CA600



CA1000



Model	Dim.(L×W×H) mm	N.W. (kg)	G.W. (kg)	20'Loading Qty. (pcs)
CA200	275×168×228	4.8	5.4	1512
CA600	344.5×188×266.5	7.3	7.4	882
CA1000	408×260×205	10.5	11.5	595