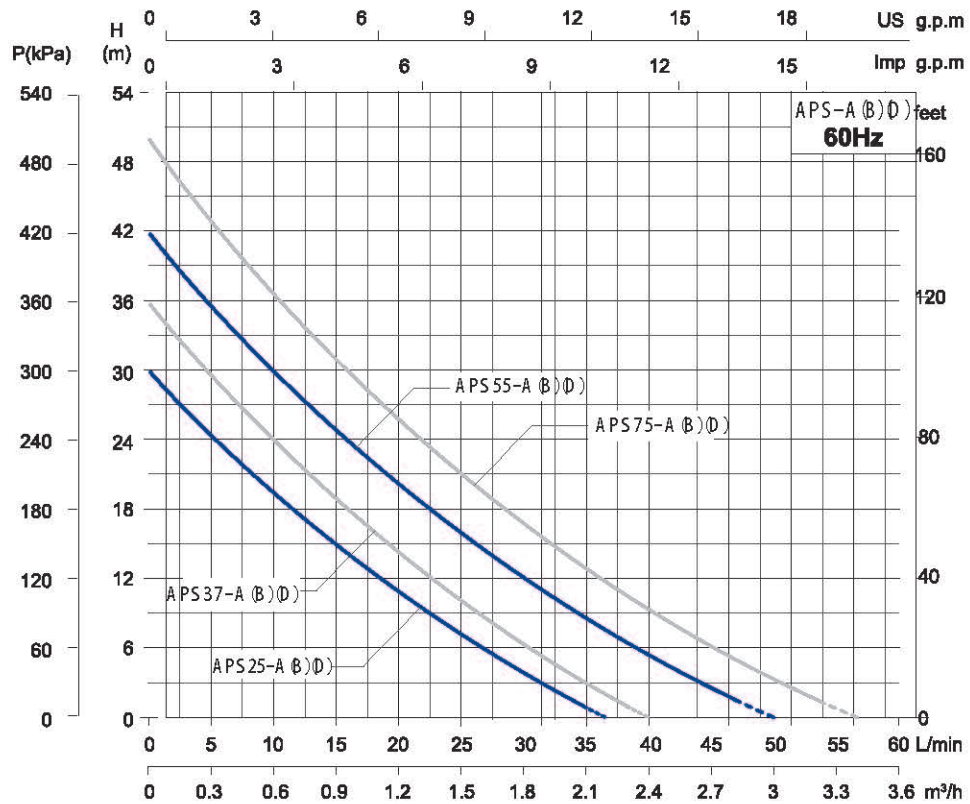


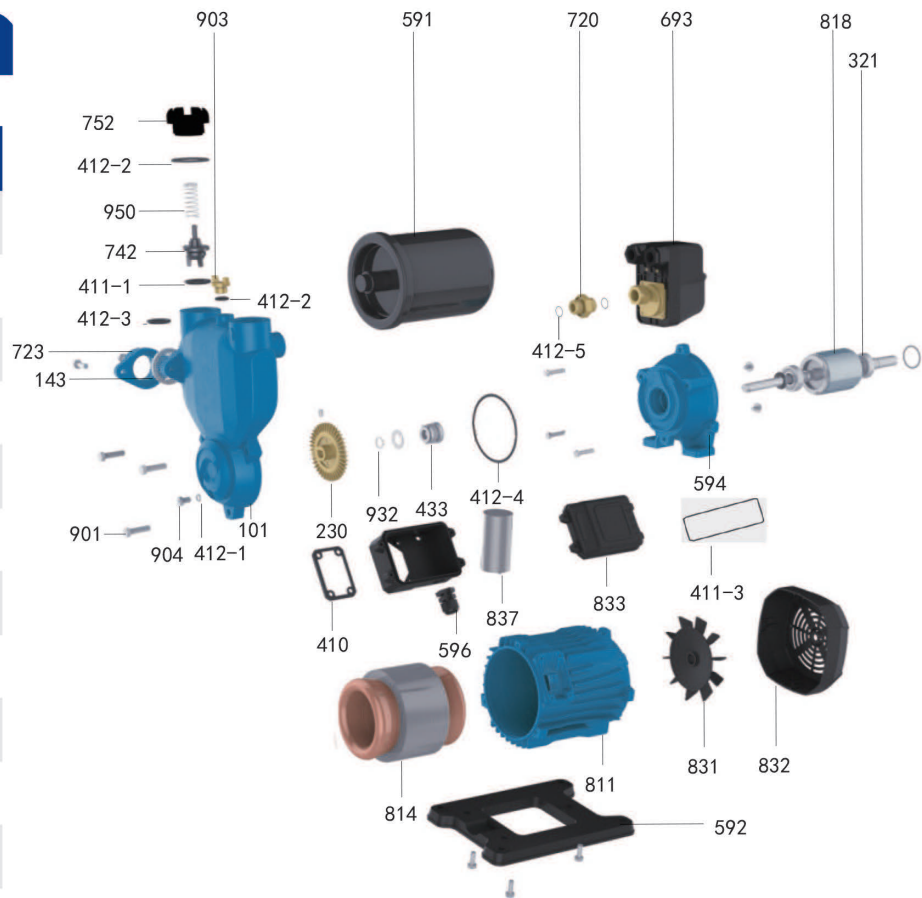
**Performance Curve**



Model	Power		Max. Flow (m³/h)	Max. Head (m)	Head Range (m)	Max. Suction (m)
	kW	HP				
APS25-A(220V/60HZ)	0.25	0.34	2.2	30	1-26	8
APS37-A(220V/60HZ)	0.37	0.5	2.4	36	1-32	8
APS55-A(220V/60HZ)	0.55	0.75	3	42	1.5-38	8
APS75-A(220V/60HZ)	0.75	1	3.4	50	1.5-46	8
APS25-B(220V-60Hz)	0.25	0.34	2.2	30	1-26	8
APS37-B(220V-60Hz)	0.37	0.5	2.4	36	1-32	8
APS55-B(220V-60Hz)	0.55	0.75	3.0	42	1.5-38	8
APS75-B(220V-60Hz)	0.75	1	3.4	50	1.5-46	8
APS25-B(110V-60Hz)	0.25	0.34	2.2	30	1-26	8
APS37-B(110V-60Hz)	0.37	0.5	2.4	36	1-32	8
APS55-B(110V-60Hz)	0.55	0.75	3.0	42	1.5-38	8
APS75-B(110V-60Hz)	0.75	1	3.4	50	1.5-46	8
APS25-B(110V/220V-60Hz)	0.25	0.34	2.2	30	1-26	8
APS37-B(110V/220V-60Hz)	0.37	0.5	2.4	36	1-32	8
APS55-B(110V/220V-60Hz)	0.55	0.75	3.0	42	1.5-38	8
APS75-B(110V/220V-60Hz)	0.75	1	3.4	50	1.5-46	8
APS25-D(110V/60HZ)	0.25	0.34	2.2	30	1-26	8
APS25-D(220V/60HZ)	0.25	0.34	2.2	30	1-26	8
APS37-D(110V/60HZ)	0.37	0.5	2.4	36	1-32	8
APS37-D(220V/60HZ)	0.37	0.5	2.4	36	1-32	8
APS37-D(110V/220V-60HZ)	0.37	0.5	2.4	36	1-32	8
APS55-D(110V/60HZ)	0.55	0.75	3	42	1.5-38	8
APS55-D(220V/60HZ)	0.55	0.75	3	42	1.5-38	8
APS75-D(110V/60HZ)	0.75	1	3.4	50	1.5-46	8
APS75-D(220V/60HZ)	0.75	1	3.4	50	1.5-46	8

## Components & Materials

No.	Part name
752	Check valve seat
143	Filter assembly
594	Connector body
230	Impeller
592	Base
903	Vent cock
950	Spring
932	Circlip for shaft
814	Stator core with winding
693	Pressure switch assembly
831	Fan \AP37

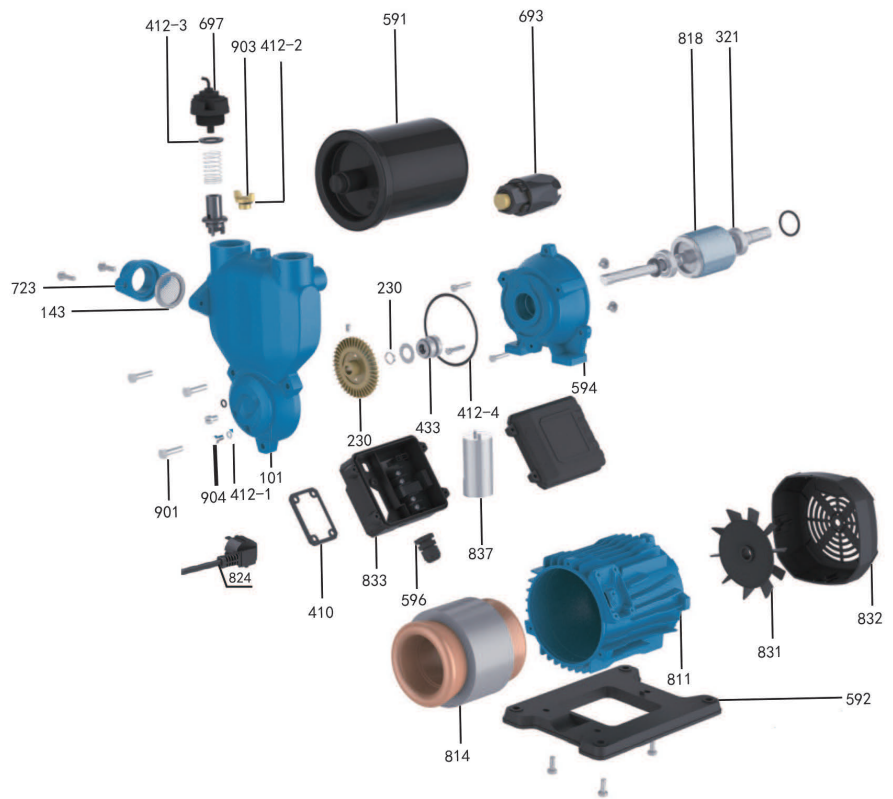


No.	Part name	No.	Part name	No.	Part name
723	Inlet pipe	433	Mechanical seal	411-1	Rubber washer
591	Pressure tank	720	Adapter	412-5	O-ring
811	Casing	410	Rubber gasket	412-3	O-ring
596	Cable lock	832	Fan cover	412-1	O-ring
101	Pump body	837	Running capacitor	412-4	O-ring
904	Slotted cheese head screw	411-2	Rubber washer	901	Hexagon head bolt
321	Deep groove ball bearing	411-3	Rubber washer		
833	Junction box assembly	412-2	O-ring		

Model	APS25-A (220V-60Hz)	APS37-A (220V-60Hz)	APS55-A (220V-60Hz)	APS75-A (220V-60Hz)
Capacitor(μF)	10μF/450V	12μF/450V	15μF/450V	20μF/450V
End cap Bearing	6201-2RZ	6201-2RZ	6202-2RZ	6202-2RZ
Connection Part Bearing	6201-2RZ	6201-2RZ	6202-2RZ	6202-2RZ
Motor Shaft	Steel 45#+304			
Mechanical Seal	108-12 S:A (PC)			
	A: Graphite,B:Alumina ceramic,P:NBR,C:stainless steel(06Cr19Ni10)			
Motor Case	Aluminum			
Coupling	CastIron			
Pump Body	CastIron			
Impeller	Brass			

## Components & Materials

No.	Specifications
412-2	O-ring
412-3	O-ring
412-1	O-ring
412-4	O-ring
101	Pump body
592	Base
596	Cable lock
824	Cable (domestic)
903	Vent cock
831	Fan\AP37
832	Fan cover
143	Filter assembly
811	Casing
433	Mechanical seal
723	Inlet pipe
904	Slotted cheese head screw
833	Control box assembly
594	Connector body
697	Flow switch
321	Deep groove ball bearing
410	Rubber gasket
411	Rubber washer
591	Pressure tank
693	Pressure switch
230	Impeller
814	Stator core with winding
837	Running capacitor
932	Circlip for shaft
818	Rotor
901	Hexagon head bolt

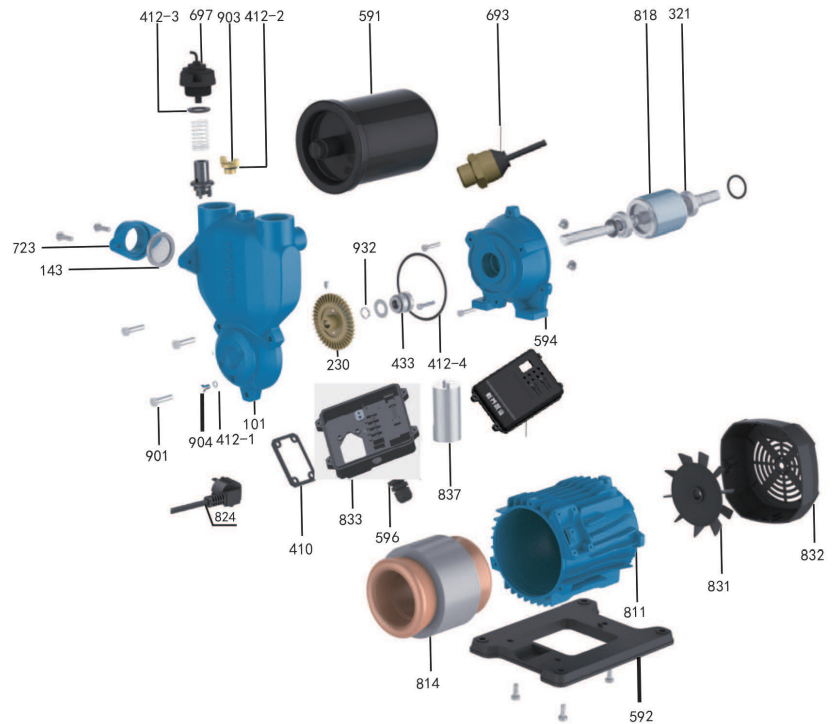


Model	APS25-B (110V-60Hz)	APS37-B (110V-60Hz)	APS55-B (110V-60Hz)	APS75-B (110V-60Hz)	APS25-B (220V-60Hz)	APS37-B (220V-60Hz)
Capacitor(μF)	25μF/250V	20μF/250V	30μF/250V	40μF/250V	10μF/450V	12μF/450V
End cap Bearing	6201-2RZ	6201-2RZ	6202-2RZ	6202-2RZ	6201-2RZ	6201-2RZ
Connection Part Bearing	6201-2RZ	6201-2RZ	6202-2RZ	6202-2RZ	6201-2RZ	6201-2RZ
Motor Shaft	Steel 45#+304					
Mechanical Seal	108-12 S:A (PC) A: Graphite,B:Alumina ceramic,P:NBR,C:stainless steel(06Cr19Ni10)					
Motor Case	Aluminum					
Coupling	Cast Iron					
Pump Body	Cast Iron					
Impeller	Brass					

Model	APS55-B (220V-60Hz)	APS75-B (220V-60Hz)	APS25-B (110V/220V-60Hz)	APS37-B (110V/220V-60Hz)	APS55-B (110V/220V-60Hz)	APS75-B (110V/220V-60Hz)
Capacitor(μF)	15μF/450V	20μF/450V	15μF/250V	15μF/250V	35μF/250V	40μF/250V
End cap Bearing	6202-2RZ	6202-2RZ	6201-2RZ	6201-2RZ	6202-2RZ	6202-2RZ
Connection Part Bearing	6202-2RZ	6202-2RZ	6201-2RZ	6201-2RZ	6202-2RZ	6202-2RZ
Motor Shaft	Steel 45#+304					
Mechanical Seal	108-12 S:A (PC) A: Graphite,B:Alumina ceramic,P:NBR,C:stainless steel(06Cr19Ni10)					
Motor Case	Aluminum					
Coupling	Cast Iron					
Pump Body	Cast Iron					
Impeller	Brass					

## Components & Materials

No.	Specifications
412-2	O-ring
412-1	O-ring
412-3	O-ring
412-4	O-ring
832	Fan cover
143	Filter assembly
831	Fan\AP37
818	Rotor
811	Casing
693	Pressure sensor
596	Cable lock
594	Connector body
591	Pressure tank
932	Circlip for shaft
433	Mechanical seal
903-2	Vent cock
837	Running capacitor
833	Control box assembly
824	Cable (domestic)
723	Inlet pipe
101	Pump body
903-1	Slotted cheese head screw
814	Stator core with winding
697	Flow switch
592	Base
411	Rubber washer
410	Rubber gasket
321	Deep groove ball bearing
230	Impeller
901	Hexagon head bolt



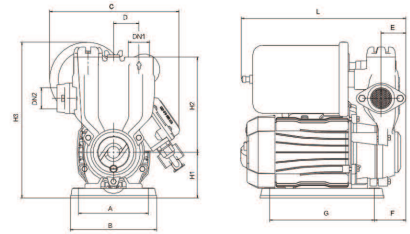
Model	APS25-D (110V-60Hz)	APS37-D (110V-60Hz)	APS55-D (110V-60Hz)	APS75-D (110V-60Hz)	APS25-D(220V-60Hz)	APS37-D (220V-60Hz)
Capacitor(μF)	25μF/250V	20μF/250V	30μF/250V	40μF/250V	10μF/450V	12μF/450V
End cap Bearing	6201-2RZ	6201-2RZ	6202-2RZ	6202-2RZ	6201-2RZ	6201-2RZ
Connection Part Bearing	6201-2RZ	6201-2RZ	6202-2RZ	6202-2RZ	6201-2RZ	6201-2RZ
Motor Shaft	Steel 45#+304					
Mechanical Seal	108-12 S:A (PC) A: Graphite,B:Alumina ceramic,P:NBR,C:stainless steel(06Cr19Ni10)					
Motor Case	Aluminum					
Coupling	Cast Iron					
Pump Body	Cast Iron					
Impeller	Brass					

Model	APS55-D (220V-60Hz)	APS75-D (220V-60Hz)	APS37-B (110V/220V-60Hz)
Capacitor(μF)	15μF/450V	20μF/450V	15μF/250V
End cap Bearing	6202-2RZ	6202-2RZ	6201-2RZ
Connection Part Bearing	6202-2RZ	6202-2RZ	6201-2RZ
Motor Shaft	Steel 45#+304		
Mechanical Seal	108-12 S:A (PC) A: Graphite,B:Alumina ceramic,P:NBR,C:stainless steel(06Cr19Ni10)		
Motor Case	Aluminum		
Coupling	Cast Iron		
Pump Body	Cast Iron		
Impeller	Brass		

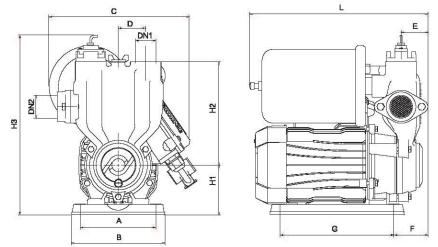


## Dimensions & Weight

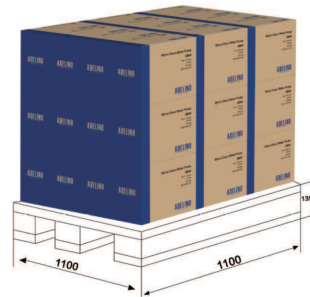
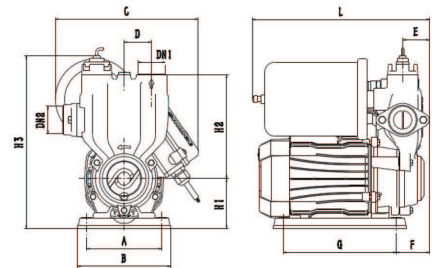
Model	DN1	DN2	Dim.(mm)										N.W. (kg)	
	Inch		A	B	C	D	E	F	G	L	H1	H2		H3
APS25-A(220V/60HZ)	1	1	110	136	204	40	39	49.5	165	259	72	150	245.5	8.5
APS37-A(220V/60HZ)	1	1	110	136	204	40	39	49.5	165	259	72	150	245.5	8.8
APS55-A(220V/60HZ)	1	1	132	160	212	50	39	41.5	190	268	84	170	285	11.4
APS75-A(220V/60HZ)	1	1	132	160	212	50	39	41.5	190	268	84	170	285	13.1



Model	DN1	DN2	Dim.(mm)										N.W. (kg)	
	Inch		A	B	C	D	E	F	G	L	H1	H2		H3
APS25-B(60HZ)	1	1	110	136	204	40	39	49.5	165	259	72	150	245.5	
APS37-B(60HZ)	1	1	110	136	204	40	39	49.5	165	259	72	150	245.5	
APS55-B(60HZ)	1	1	132	160	212	50	39	41.5	190	268	84	170	285	
APS75-B(60HZ)	1	1	132	160	212	50	39	41.5	190	268	84	170	285	



Model	DN1	DN2	Dim.(mm)										N.W. (kg)	
	Inch		A	B	C	D	E	F	G	L	H1	H2		H3
APS25-D(110V/60HZ)	1	1	110	136	210	40	39	49.5	165	259	72	150	261	8.5
APS25-D(220V/60HZ)	1	1	110	136	210	40	39	49.5	165	259	72	150	261	8.5
APS37-D(110V/60HZ)	1	1	110	136	210	40	39	49.5	165	259	72	150	261	8.8
APS37-D(220V/60HZ)	1	1	110	136	210	40	39	49.5	165	259	72	150	261	8.8
APS37-D(110V/220V-60HZ)	1	1	110	136	214	40	39	49.5	165	259	72	150	261	8.8
APS55-D(110V/60HZ)	1	1	132	160	222	50	39	41.5	190	268	84	170	293	11.4
APS55-D(220V/60HZ)	1	1	132	160	218	50	39	41.5	190	268	84	170	293	11.4
APS75-D(110V/60HZ)	1	1	132	160	222	50	39	41.5	190	268	84	170	293	13.1
APS75-D(220V/60HZ)	1	1	132	160	218	50	39	41.5	190	268	84	170	293	13.1



## Packing Size & Weight

Model	Dim.(LxWxH) mm	G.W. (kg)	20'Loading Qty. (pcs)
APS25-A(B)(220V/60HZ)	295x230x305	9.0	1600
APS37-A(B)(220V/60HZ)	295x230x305	9.3	1600
APS55-A(B)(220V/60HZ)	315x245x325	12.1	1320
APS75-A(B)(220V/60HZ)	315x245x325	13.8	1320

Model	Dim.(LxWxH) mm	G.W. (kg)	20'Loading Qty. (pcs)
APS25-D(110V/60HZ)	295x230x305	9	1600
APS25-D(220V/60HZ)	295x230x305	9	1600
APS37-D(110V/60HZ)	295x230x305	9.3	1600
APS37-D(220V/60HZ)	295x230x305	9.3	1600
APS37-D(110V/220V-60HZ)	295x230x305	9.3	1600
APS55-D(110V/60HZ)	315x245x325	12.1	1320
APS55-D(220V/60HZ)	315x245x325	12.1	1320
APS75-D(110V/60HZ)	315x245x325	13.8	1320
APS75-D(220V/60HZ)	315x245x325	13.8	1320