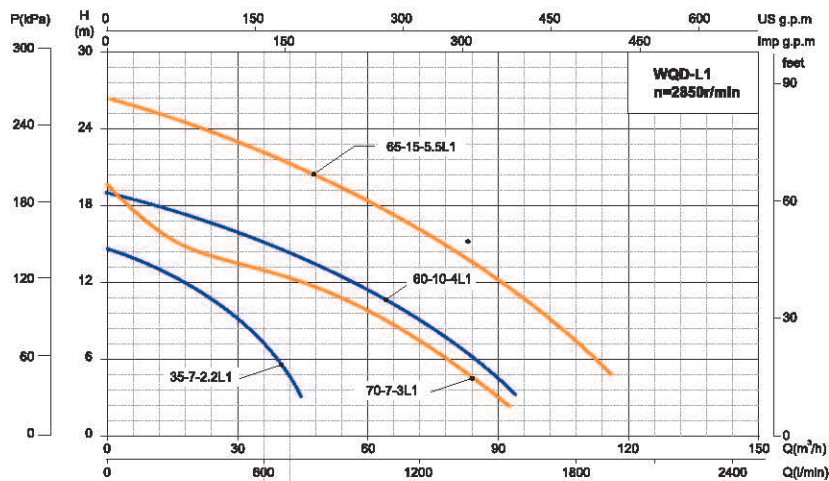
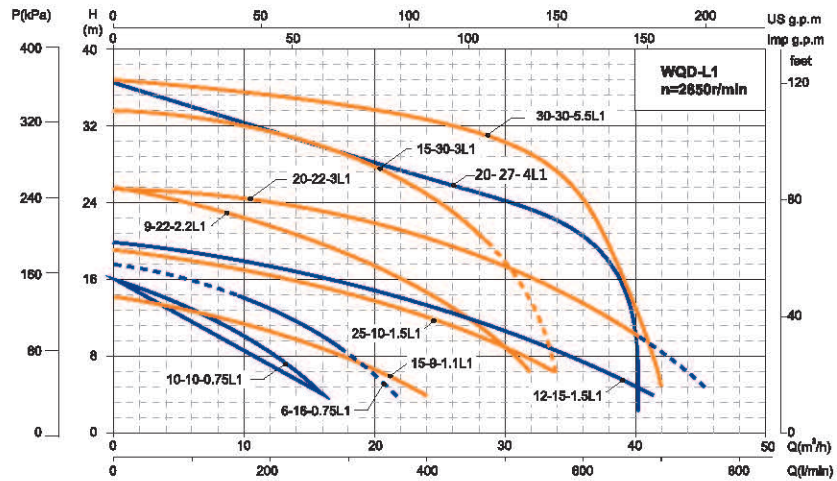
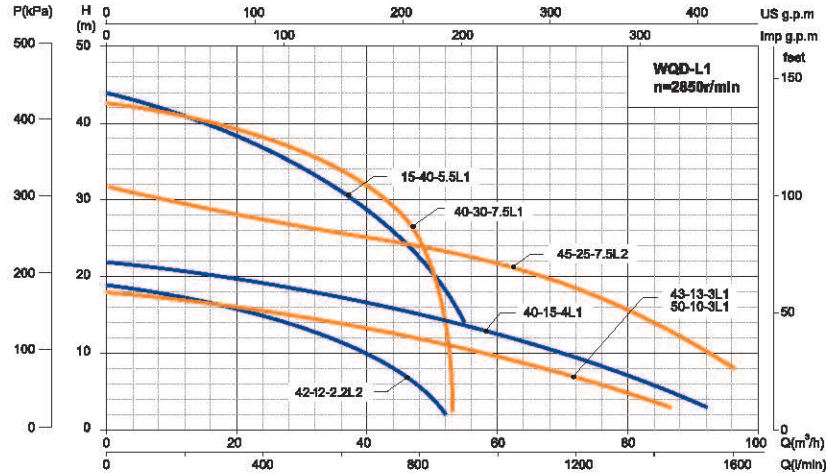
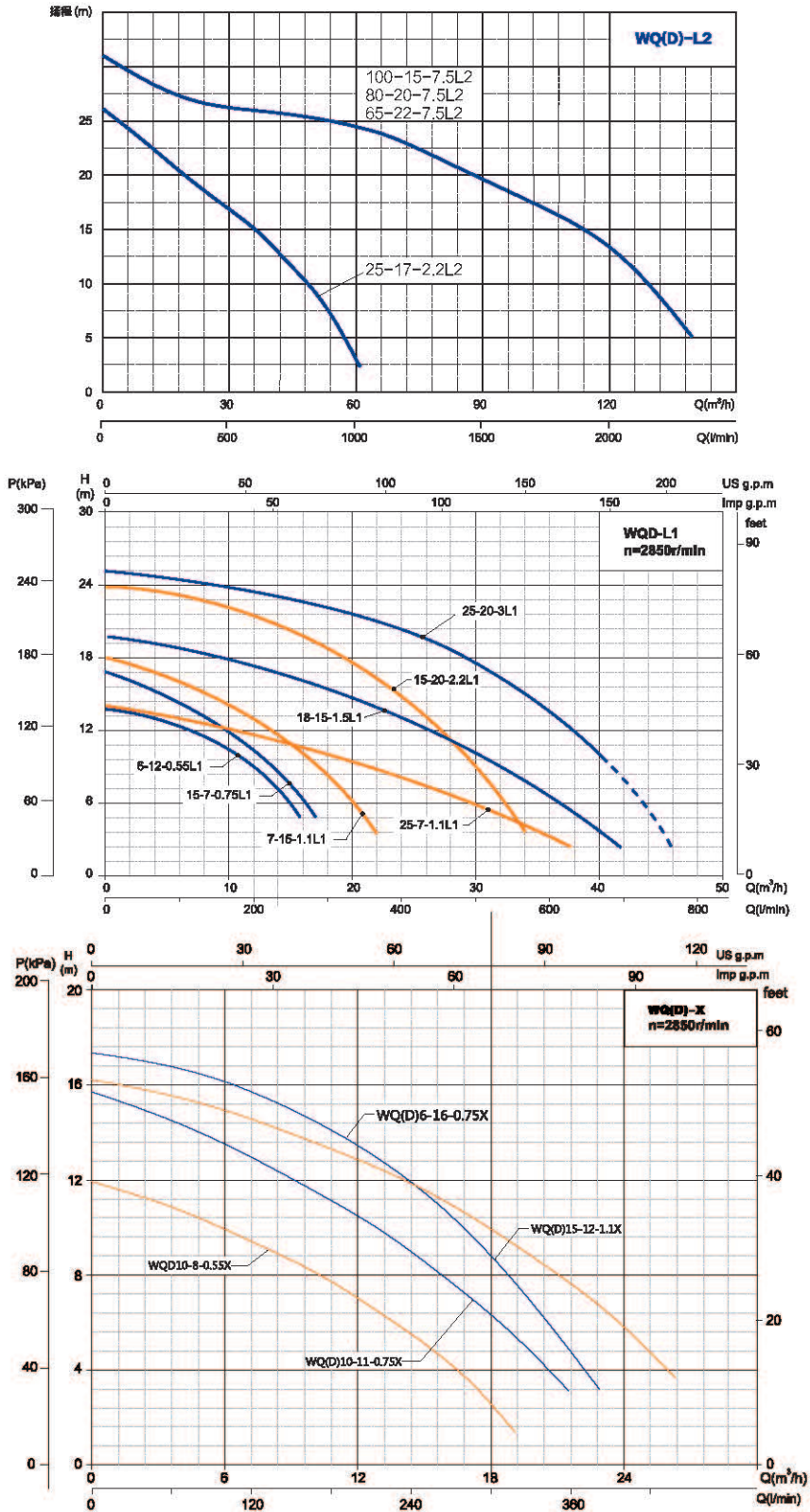


Performance Curve



**Performance Curve**



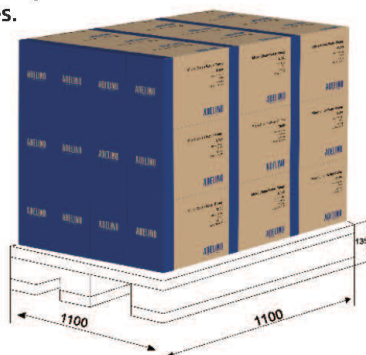
Model		Power		Rate Current (A)	Solids Passage (mm)	Max. Flow (m <sup>3</sup> /h)	Max. Head (m)	Head Range (m)	Cable line (m)	Dim.mm (L×W×H)	G.W (kg)	20' Loading Qty. (pcs)
Single-Phase	Three-Phase	kW	HP									
WQD6-12-0.55L3	-	0.55	0.75	4.1	20	17	15	14~0	3*0.75-8	470x250x235	18.5	1080
WQD6-16-0.75L3	-	0.75	1	5.2	20	18	19	19~9	3*0.75-8	470x250x235	20	1080
WQD10-10-0.75L1	-	0.75	1	5.2	20	24	15	15~0	3*0.75-8	470x250x235	22	1080
WQD7-15-1.1L1	-	1.1	1.5	7.3	20	23	19	18~3	3*1-8	550x245x295	31	960
WQD15-9-1.1L1	-	1.1	1.5	7.3	20	25.5	14.5	14.5~0	3*1-8	550x245x295	30	1080
WQD6-12-0.55L3(F)	-	0.55	0.75	4.1	20	19	15	15~0	3*0.75-8	470x250x235	18.5	1080
WQD6-16-0.75L3(F)	-	0.75	1	5.2	20	18	19	19~9	3*0.75-8	470x250x235	20	1080
WQD10-10-0.75L1(F)	-	0.75	1	5.2	20	17	16	16~0	3*0.75-8	470x250x235	22	1080
WQD10-10-0.75L1(FL)	-	0.75	1	5.2	20	17	16	16~0	3*0.75-8	520x210x275	26	968
WQD7-15-1.1L1(FL)	-	1.1	1.5	7.3	20	23	19	18~3	3*1-8	550x245x235	34	1080
WQD15-9-1.1L1(FL)	-	1.1	1.5	7.3	20	25.5	14.5	14.5~0	3*1-8	450x245x275	33	1080
-	WQ6-16-0.75L3	0.75	1	2	20	16	19	19~9	4*0.75-8	470x250x235	19	1080
-	WQ10-10-0.75L1	0.75	1	2	20	24	15	16~0	4*0.75-8	470x250x235	23	968
-	WQ15-7-0.75L1	0.75	1	2	20	17	17	17~0	4*0.75-8	520x210x275	23	968
-	WQ7-15-1.1L1	1.1	1.5	2.7	20	22	18	18~3	4*0.75-8	550x245x295	34	960
-	WQ15-9-1.1L1	1.1	1.5	2.7	20	24	14	14~0	4*0.75-8	550x245x295	28	960
-	WQ25-7-1.1L1	1.1	1.5	2.7	25	38	14	14~0	4*0.75-8	550x245x295	29	960
-	WQ12-15-1.5L1	1.5	2	3.6	20	37	20	20~0	4*0.75-15	550x245x295	31	960
-	WQ18-15-1.5L1	1.5	2	3.6	20	47	20	20~0	4*0.75-15	610x260x308	45	960
-	WQ25-10-1.5L1	1.5	2	3.6	25	40	19	19~0	4*0.75-8	550x245x295	30	960
-	WQ9-22-2.2L2	2.2	3	5.1	20	32	26	26~0	4*1-15	630x285x345	46	432
-	WQ15-20-2.2L1	2.2	3	5.1	20	34	25	25~0	4*1-15	630x285x345	46	432
-	WQ25-17-2.2L2	2.2	3	5.1	25	55	24	24~0	4*1-15	630x285x345	51	432
-	WQ35-7-2.2L1	2.2	3	5.1	25	50	15.5	15.5~0	4*1-8	630x285x345	51	432
-	WQ42-12-2.2L2	2.2	3	5.1	25	55	24	24~0	4*1-8	630x285x345	51	432
-	WQ15-30-3L3	3	4	6.7	25	30	33	33~20	3*1.5+1x1-15	680x285x345	59	384
-	WQ20-22-3L3	3	4	6.7	25	48	27	28~10	3*1.5+1x1-8	680x285x345	61	384
-	WQ25-20-3L3	3	4	6.7	25	48	27	25.5~10	3*1.5+1x1-8	680x285x345	61	384
-	WQ43-13-3L3	3	4	6.7	25	82	18.5	18.5~0	3*1.5+1x1-8	700x310x370	68	342
-	WQ50-10-3L3	3	4	6.7	25	82	18.5	18.5~0	3*1.5+1x1-8	700x310x370	68	342
-	WQ70-7-3L3	3	4	6.7	25	93	20	20~0	3*1.5+1x1-15	715x345x415	63	255
-	WQ20-27-4L1	4	5.5	8.8	25	40	36	36~0	3x1.5+1x1-8	710x350x380	63	255

Centrifugal pumps are not recommended to be used less than the lift range.

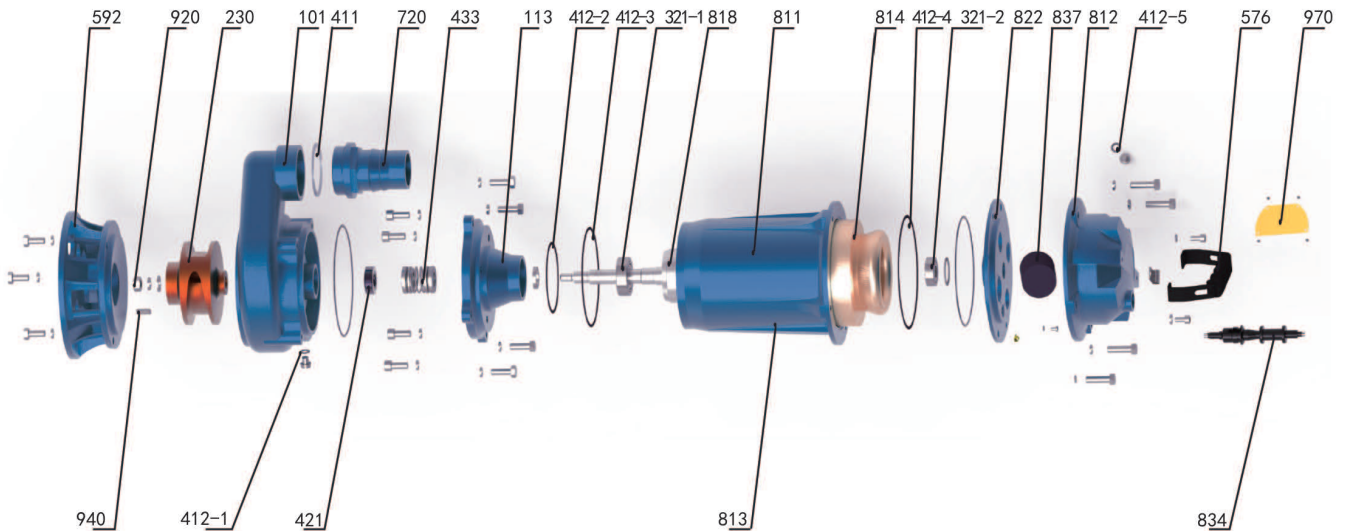


Model		Power		Rate Current (A)	Solids Passage (mm)	Max. Flow (m <sup>3</sup> /h)	Max. Head (m)	Head Range (m)	Cable line (m)	Dim. mm (L×W×H)	G.W (kg)	20' Loading Qty. (pcs)
Single-Phase	Three-Phase	kW	HP									
-	WQ40-15-4L1	4	5.5	8.8	25	91	22	22~0	3*1.5+1*1-8	745×345×415	73	255
-	WQ60-10-4L1	4	5.5	8.8	25	91	20.5	20.5~0	3*1.5+1*1-8	745×345×415	73	255
-	WQ15-40-5.5L1	5.5	7.5	11.7	25	50	42.5	44~0	3*1.5+1*1 ☆ -15	750×340×380	89	306
-	WQ30-30-5.5L1	5.5	7.5	11.7	25	50	42.5	42.5~0	3*1.5+1*1 ☆ -15	750×310×380	97	306
-	WQ65-15-5.5L1	5.5	7.5	11.7	30	118	27	27~0	3*1.5+1*1 ☆ -8	810×340×410	96	201
-	WQ40-30-7.5L1	7.5	10	15.7	25	53	43	43~0	3×1.5+1×1 ☆ -8	800×355×410	102	210
-	WQ45-25-7.5L2	7.5	10	15.7	30	124	30	30~0	3×1.5+1×1 ☆ -8	845×355×415	111	180
-	WQ65-25-7.5L2	7.5	10	15.7	30	130	30	30~0	3×1.5+1×1 ☆ -8	845×355×415	111	180
-	WQ80-20-7.5L2	7.5	10	15.7	30	130	30	30~0	3×1.5+1×1 ☆ -8	845×355×425	111	180
-	WQ100-15-7.5L2	7.5	10	15.7	30	130	30	30~0	3×1.5+1×1 ☆ -8	845×355×415	111	180
-	WQ10-10-0.75L1(FL)	0.75	1	2	20	17	16	16~0	4*0.75-8	520×210×275	25	968
-	WQ15-7-0.75L1(FL)	0.75	1	2	20	17	17	17~0	4*0.75-8	520×210×275	23	968
-	WQ7-15-1.1L1(FL)	1.1	1.5	2.7	20	22	18	18~3	4*0.75-8	550×245×295	33	1080
-	WQ15-9-1.1L1(FL)	1.1	1.5	2.7	20	24	14	14~0	4*0.75-8	550×245×295	31	1080
-	WQ25-7-1.1L1(FL)	1.1	1.5	2.7	20	38	14	14~0	4*0.75-8	550×245×295	32	1080
-	WQ12-15-1.5L1(FL)	1.5	2	3.6	20	37	20	20~0	4*0.75-15	550×245×295	34	1080
-	WQ18-15-1.5L1(FL)	1.5	2	3.6	20	40	20	20~0	4*0.75-15	550×245×295	31	1080
-	WQ25-10-1.5L1(FL)	1.5	2	3.6	25	40	19	19~0	4*0.75-8	550×245×295	30	1080
WQD10-8-0.55X	-	0.55	0.75	4.1	13	19	12	12~0	3*0.75-8	480×230×215	18	1080
WQD6-16-0.75X	-	0.75	1	5.2	14	22	17	17~9	3*0.75-8	470×250×235	21	1080
WQD10-11-0.75X	-	0.75	1	5.2	14	21	16	16~0	3*0.75-8	450×230×215	19	1080
WQD15-12-1.1X	-	1.1	1.5	7.3	15	26	16	16~0	3*1-8	550×245×295	30	960
-	WQ6-16-0.75X	0.75	1	2	14	22	17	17~9	4*0.75-8	450×230×215	21	1080
-	WQ10-11-0.75X	0.75	1	2	14	21	16	16~0	4*0.75-8	450×230×215	20.5	1080
-	WQ15-12-1.1X	1.1	1.5	2.7	15	26	16	16~0	4*0.75-8	550×245×280	29	960

Centrifugal pumps are not recommended to be used less than the lift range.  
 Note:0.55kW~0.75kW is the honeycomb box, the rest are wooden cases.

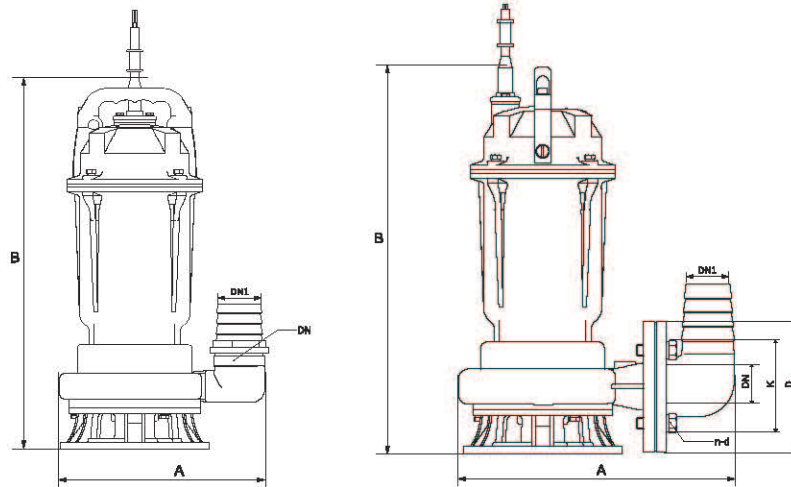


## Components & Materials



No.	Part name	No.	Part name	No.	Part name
101	Pump body	412-4	O-ring	814	Stator core with winding
113	Oil chamber	412-5	O-ring	818	Rotor
230	Impeller	421	Framework oil seal	822	Upper bearing block
321-1	Deep groove ball bearing	433	Mechanical seal	834	Cable sheath
321-2	Deep groove ball bearing	576	Handle	837	Running capacitor
411	Rubber washer	592	Base	920	Hexagon nut - Style 1
412-1	O-ring	720	Outlet joint	940	Flat key
412-2	O-ring	811	Casing	970	Nameplate
412-3	O-ring	812	Head cover		

## Dimensions & Weight



Model		Dim.(mm)							N.W. (kg)
Single-Phase	Three-Phase	A	B	DN1	DN	D	K	n-d	
WQD6-12-0.55L1	-	242	415	2"					18
WQD6-16-0.75L1	-	242	415	2"					21
WQD10-10-0.75L1	-	242	415	2"					20
WQD7-15-1.1L1	-	263	475	2"					28
WQD15-9-1.1L1	-	260	475	2"					27
WQD6-12-0.55L1(F)	-	242	415	2"					18
WQD6-16-0.75L1(F)	-	242	415	2"					21
WQD10-10-0.75L1(F)	-	242	415	2"					20
WQD10-10-0.75L1(FL)	-	298	415	2"	2"	140	110	4-M12	23
WQD7-15-1.1L1(FL)	-	338	475	2"	2"	140	110	4-M12	31
WQD15-9-1.1L1(FL)	-	314	475	2"	2"	140	110	4-M12	30
-	WQ6-16-0.75L1	242	415	2"					20
-	WQ10-10-0.75L1	242	414	2"					20
-	WQ15-7-0.75L1	247	414	2"					20
-	WQ7-15-1.1L1	263	475	2"					31
-	WQ15-9-1.1L1	260	475	2"					25
-	WQ25-7-1.1L1	267	485	2"					26
-	WQ12-15-1.5L1	267	485	2"					28
-	WQ18-15-1.5L1	267	485	2"					28
-	WQ25-10-1.5L1	267	485	2"					27

Model		Dim.(mm)							N.W. (kg)
Single-Phase	Three-Phase	A	B	DN1	DN	D	K	n-d	
-	WQ9-22-2.2L2	341	532	2"	2"	140	110	4-M12	42
-	WQ15-20-2.2L1	356	532	2"	2"	140	110	4-M12	42
-	WQ25-17-2.2L2	380	544	2.5"	2.5"	160	130	4-M12	47
-	WQ35-7-2.2L1	380	544	2.5"	2.5"	160	130	4-M12	47
-	WQ42-9-2.2L1	390	545	3"	3"	190	150	4-M16	47
-	WQ15-30-3L3	371	570	2"	2"	140	110	4-M12	55
-	WQ20-22-3L3	380	574	2.5"	2.5"	160	130	4-M12	57
-	WQ25-20-3L3	370	574	2.5"	2.5"	160	130	4-M12	57
-	WQ43-13-3L3	437	613	3"	3"	190	150	4-M16	63
-	WQ50-10-3L3	437	613	3"	3"	190	150	4-M16	63
-	WQ70-7-3L3	452	622	4"	4"	210	170	4-M16	58
-	WQ40-15-4L1	452	653	3"	3"	190	150	4-M16	68
-	WQ60-10-4L1	452	653	4"	4"	210	170	4-M16	68
-	WQ20-27-4L1	392	631	2.5"	2.5"	160	130	4-M12	59
-	WQ15-40-5.5L1	416	662	2"	2"	140	110	4-M12	83
-	WQ30-30-5.5L1	443	662	3"	3"	190	150	4-M16	91
-	WQ65-15-5.5L1	452	711	4"	4"	210	170	4-M16	90
-	WQ40-30-7.5L1	416	687	3"	3"	190	150	4-M16	96
-	WQ45-25-7.5L2	481	751	3"	3"	190	150	4-M16	104
-	WQ65-25-7.5L2	505	751	4"	4"	210	170	4-M16	104
-	WQ80-20-7.5L2	505	751	4"	4"	210	170	4-M16	104
-	WQ100-15-7.5L2	505	751	4"	4"	210	170	4-M16	104
-	WQ10-10-0.75L1(FL)	298	687	2"	2"	140	110	4-M12	28
-	WQ15-7-0.75L1(FL)	310	415	2"	2"	140	110	4-M12	22
-	WQ7-15-1.1L1(FL)	338	415	2"	2"	140	110	4-M12	30
-	WQ15-9-1.1L1(FL)	314	475	2"	2"	140	110	4-M12	28
-	WQ25-7-1.1L1(FL)	332	475	2"	2"	140	110	4-M12	29
-	WQ12-15-1.5L1(FL)	332	485	2"	2"	140	110	4-M12	31
-	WQ18-15-1.5L1(FL)	332	485	2"	2"	140	110	4-M12	31
-	WQ25-10-1.5L1(FL)	332	485	2"	2"	140	110	4-M12	30
WQD10-8-0.55X	-	240	415	2"	G1½ Pipe Thread				17.5
WQD6-16-0.75X	-	240	415	2"					19
WQD10-11-0.75X	-	240	415	2"					18.5
WQD15-12-1.1X	-	265	475	2"					26
-	WQ6-16-0.75X	242	415	2"					19
-	WQ10-11-0.75X	242	414	2"					18.5
-	WQ15-12-1.1X	263	475	2"					26