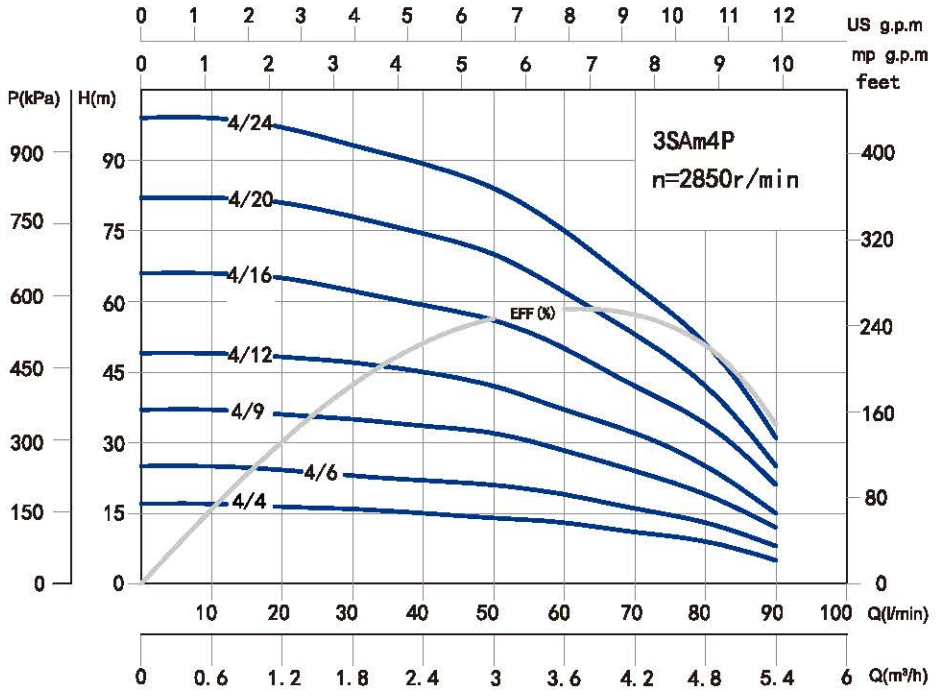
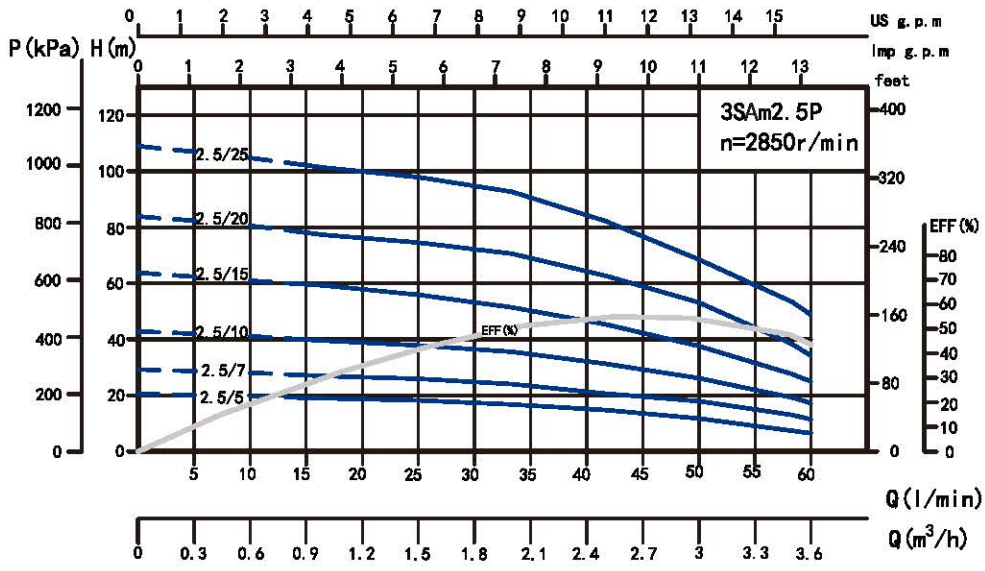


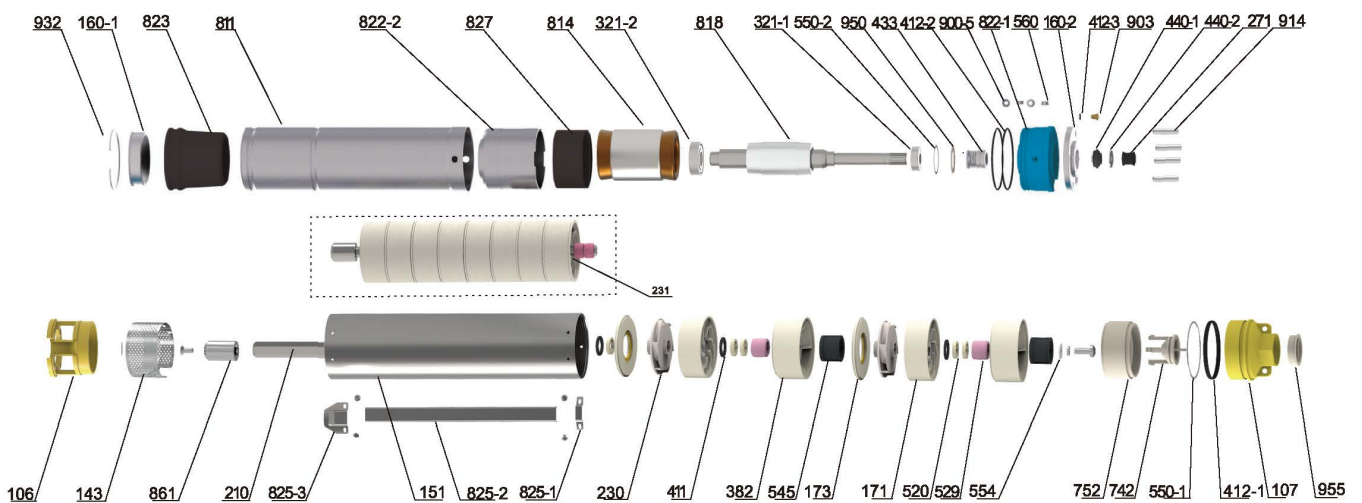
Performance Curve



Model	Power		Rate Current (A)	Flow													Head Range (m)	
	Single-Phase	kW		HP	m ³ /h	0	0.3	0.6	0.9	1.2	1.5	1.8	2.1	2.4	2.7	3		3.3
					220V	l/min	0	5	10	15	20	25	30	35	40	45		50
3SAm2.5/5P	0.18	0.25	2	H(m)	20	20	20	19	19	18	18	17	15	13	12	10	19~10	
3SAm2.5/7P	0.25	0.33	2.7		29	29	28	27	26	26	25	24	21	19	18	17	27~17	
3SAm2.5/10P	0.37	0.5	3.8		41	41	40	39	39	38	37	35	33	30	27	24	39~24	
3SAm2.5/15P	0.55	0.75	5.4		62	61	60	58	58	56	54	51	47	44	40	35	58~35	
3SAm2.5/20P	0.75	1	6.2		83	82	81	76	76	74	73	70	64	59	53	49	76~49	
3SAm2.5/25P	1.1	1.5	7.9		106	105	103	101	99	95	93	89	82	77	64	57	101~57	

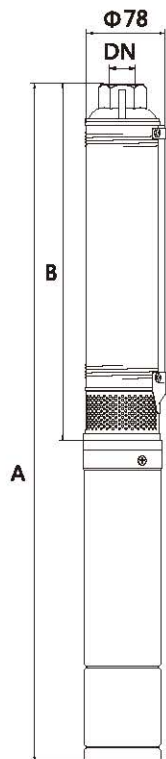
Model	Power		Rate Current (A)	Flow												Head Range (m)
	Single-Phase	kW		HP	m ³ /h	0	0.6	1.2	1.8	2.4	3	3.6	4.2	4.8	5.4	
					220V	l/min	0	10	20	30	40	50	60	70	80	
3SAm4/4P	0.18	0.25	2	H(m)	17	17	16	15	15	14	13	11	9	5	16~5	
3SAm4/6P	0.25	0.33	2.7		25	25	24	23	22	21	19	16	13	8	24~8	
3SAm4/9P	0.37	0.5	3.8		37	37	36	35	33	32	28	24	19	12	36~12	
3SAm4/12P	0.55	0.75	5.4		49	49	48	47	45	42	37	32	25	15	48~15	
3SAm4/16P	0.75	1	6.2		66	66	65	62	59	56	50	42	34	21	65~21	
3SAm4/20P	0.92	1.25	7.3		82	82	81	78	74	70	62	53	42	25	81~25	
3SAm4/24P	1.1	1.5	7.9		99	99	97	93	89	84	75	63	51	31	97~31	

Components & Materials



No.	Part name	No.	Part name	No.	Part name	No.	Part name
106	Inlet joint	321-1	Deep groove ball bearing 6202	545	Rubber bearing	825-1	Small pressing plate
107	Delivery chamber	321-2	Deep groove ball bearing 6003	550-1	Adjusting washer	825-2	Cable pressing plate
143	Net cover	382	Bearing block	550-2	Flat washer	825-3	Small pressing plate
151	Sleeve	411	Wear washer	554	Flat washer	827	Lower spacer sleeve
160-1	Bottom cover	412-1	O-ring	560	Locating sleeve	904	Vent cock
160-2	Cover plate	412-2	O-ring	742	Bonnet	904	Vent cock
171	Guide vane	412-3	O-ring	752	Valve seat	914	Hexagon socket flat point set screw
173	Guide vane cover plate	433	Mechanical seal	814	Stator core with winding	932	Retaining ring
210	Pump shaft	440-1	Anti-sand seat	818	Rotor	950	Wave spring
230	Impeller	440-2	Anti-sand pad	822-1	Oil chamber	955	Dust cover
231	Impeller string	520	Spacer bush	822-2	Lower bearing block		
271	Anti-sand sleeve	529	Shaft sleeve	823	Pressure regulating film		

Dimensions & Weight



Model	Pipe Connection (DN)	Dim. (mm)		N.W.(kg)	
		B	A Single-Phase	Body(kg)	Motor(kg) M(Single-phase)
3SAm2.5/5P	G1	311	609	1.1	3.9
3SAm2.5/7P		367	688	1.4	4.6
3SAm2.5/10P		450	801	1.6	5.4
3SAm2.5/15P		613	1005	2.7	6.3
3SAm2.5/20P		752	1176	3.4	7.1
3SAm2.5/25P		916	1425	3.7	9.3

Model	Pipe Connection (DN)	Dim. (mm)		N.W.(kg)	
		B	A Single-Phase	Body(kg)	Motor(kg) M(Single-phase)
3SAm4/4P	G1½	273	565	1.6	3.9
3SAm4/6P		336	653	1.8	4.6
3SAm4/9P		430	777	2.1	5.4
3SAm4/12P		524	911	2.5	6.3
3SAm4/16P		673	1090	2.9	7.1
3SAm4/20P		798	1255	3.3	8.5
3SAm4/24P		924	1426	4.2	9.3

Packing Size & Weight

Model	Dim. (mm)	G. W. (kg)	20" Load Qty.(pcs)
Single-phase	Pump(LxWxH)		
3SAm2.5/5P	920x90x185	7	1770
3SAm2.5/7P	980x90x185	8	1630
3SAm2.5/10P	1100x90x185	9.5	1470
3SAm2.5/15P	1300x90x185	11.5	1240
3SAm2.5/20P	1470x90x185	13	1090
3SAm2.5/25P	1710x90x185	16	930

Model	Dim. (mm)	G. W. (kg)	20" Load Qty.(pcs)
Single-phase	Pump(LxWxH)		
3SAm4/4P	920x90x185	6.0	1700
3SAm4/6P	980x90x185	7.0	1590
3SAm4/9P	1100x90x185	8.0	1420
3SAm4/12P	1265x90x185	9.5	1230
3SAm4/16P	1435x90x185	10.5	1090
3SAm4/20P	1650x90x185	12.5	945
3SAm4/24P	1760x90x185	14.5	890

