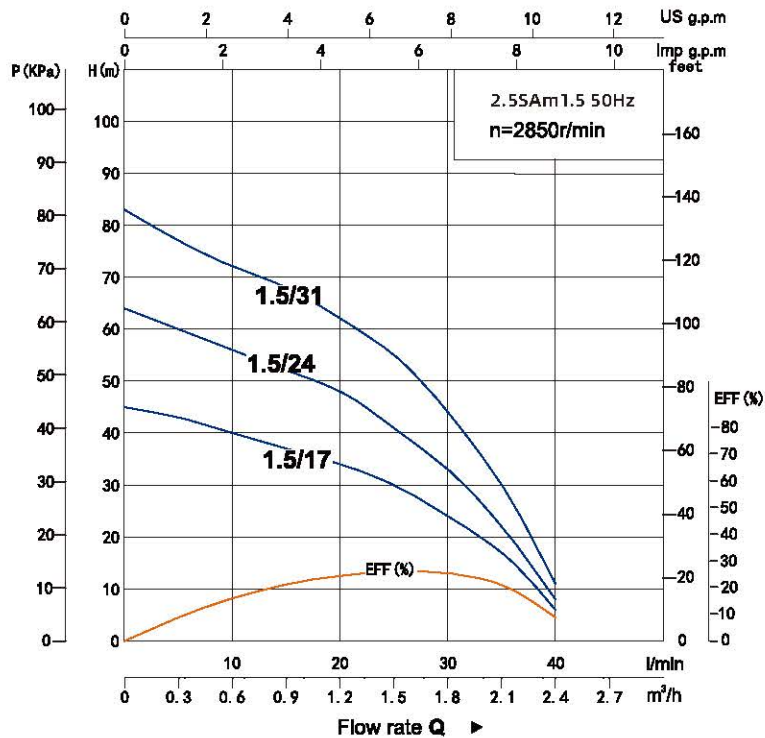
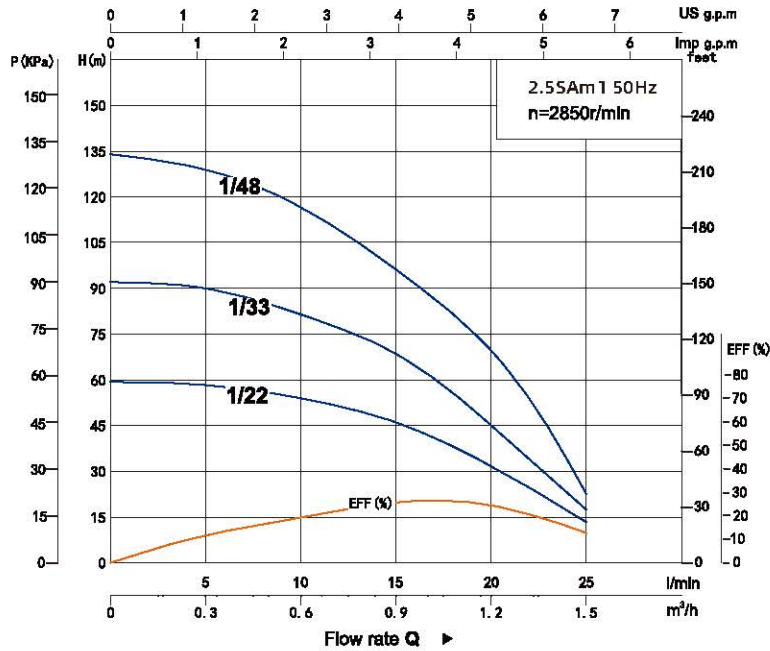


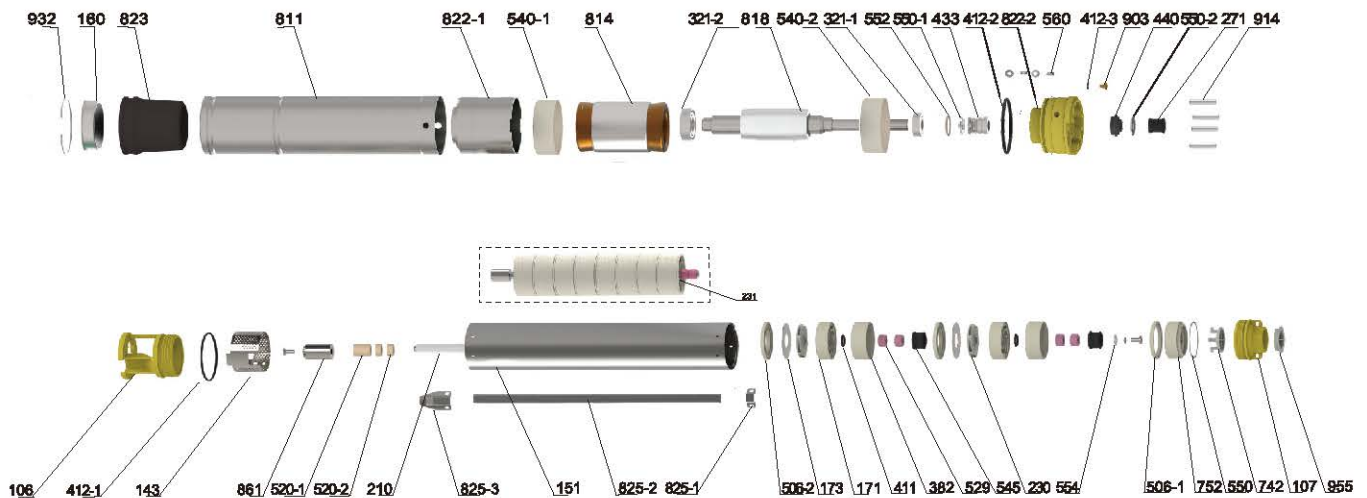
Performance Curve



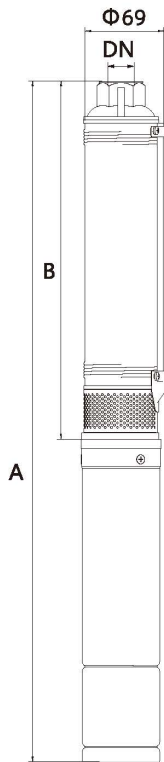
Model	Power		Rate Current (A)	Flow							Head Range (m)
	kW	HP		m ³ /h	0	0.3	0.6	0.9	1.2	1.5	
			220V	l/min	0	5	10	15	20	25	
2.5SAm1/22	0.25	0.33	2	H(m)	58	57	52	45	31	13	57~25
2.5SAm1/33	0.37	0.5	2.8		90	88	78	67	44	17	88~35
2.5SAm1/48	0.55	0.75	4.2		131	126	114	94	68	22	126~55

Model	Power		Rate Current (A)	Flow									Head Range (m)	
	kW	HP		m ³ /h	0	0.3	0.6	0.9	1.2	1.5	1.8	2.1		2.4
			220V	l/min	0	5	10	15	20	25	30	35		40
2.5SAm1.5/17	0.25	0.33	2	H(m)	45	43	40	37	34	30	24	17	6	41~21
2.5SAm1.5/24	0.37	0.5	2.8		64	60	56	52	48	41	33	22	8	58~28
2.5SAm1.5/31	0.55	0.75	4.2		83	77	72	68	62	55	44	30	11	74~37

Components & Materials



No.	Part name	No.	Part name	No.	Part name
106	Inlet joint	433	Mechanical seal	811	Casing
107	Delivery chamber	440	Anti-sand seat	814	Stator core with winding
143	Net cover	506-1	Valve seat ring	818	Rotor
151	Sleeve	506-2	Inlet joint ring	822-1	Lower bearing block
160	Bottom cover	520	Spacer bush	822-2	Oil chamber
171	Guide vane	520	Spacer bush	823	Pressure regulating film
173	Stainless steel cover plate	529	Ceramic shaft sleeve	825-1	Small pressing plate
210	Pump shaft	540-1	Insulating paper	825-2	Cable pressing plate
230	Impeller	540-2	Insulating paper	825-3	Small pressing plate
231	Impeller string	545	Middle rubber bearing	861	Coupling
271	Anti-sandsleeve	550	Adjusting washer	903	Vent cock
321-1	Deep groove ball bearing	550-1	Flat washer	914	Hexagon socket set screw
321-2	Deep groove ball bearing	550-2	Anti-sand pad	932	Retaining ring
382	Middle bearing block	552	Wave spring	955	Dust cover
411	Wear washer	554	Flat washer		
412-1	O-ring	560	Locating sleeve		
412-2	O-ring	742	Bonnet		
412-3	O-ring	752	Valve seat		



Dimensions & Weight

Model	Pipe Connection (DN)	Dim. (mm)		N.W.(kg)	
		B	A Single-Phase	Body(kg)	Motor(kg) M(Single-phase)
2.5SAm1/22	G1	626	967	2.6	4.3
2.5SAm1/33		864	1245	3.6	5.2
2.5SAm1/48		1179	1610	5	6.2

Model	Pipe Connection (DN)	Dim. (mm)		N.W.(kg)	
		B	A Single-Phase	Body(kg)	Motor(kg) M(Single-phase)
2.5SAm1.5/17	G1	639	980	2.5	4.3
2.5SAm1.5/24		825	1206	3.3	5.2
2.5SAm1.5/31		1034	1465	4	6.2

Packing Size & Weight

Model	Dim. (mm)	G.W.(kg)	20"LoadInE Qty.(pcs)
Single-phase	Pump(LxWxH)		
2.5SAm1/22	1300x80x185	8.9	1351
2.5SAm1/33	1600x80x185	10.8	1097
2.5SAm1/48	1900x80x185	13.2	920

Model	Dim. (mm)	G.W.(kg)	20"LoadInE Qty.(pcs)
Single-phase	Pump(LxWxH)		
2.5SAm1.5/17	1300x80x185	8.8	1351
2.5SAm1.5/24	1500x80x185	10.5	1171
2.5SAm1.5/31	1800x80x185	12.2	973

