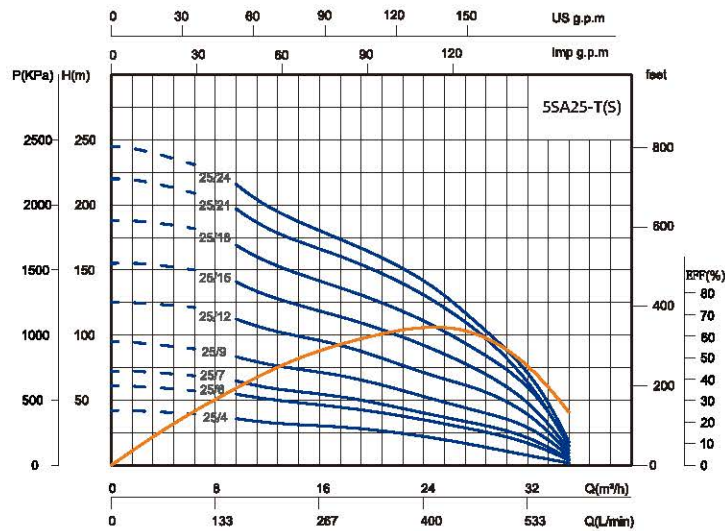
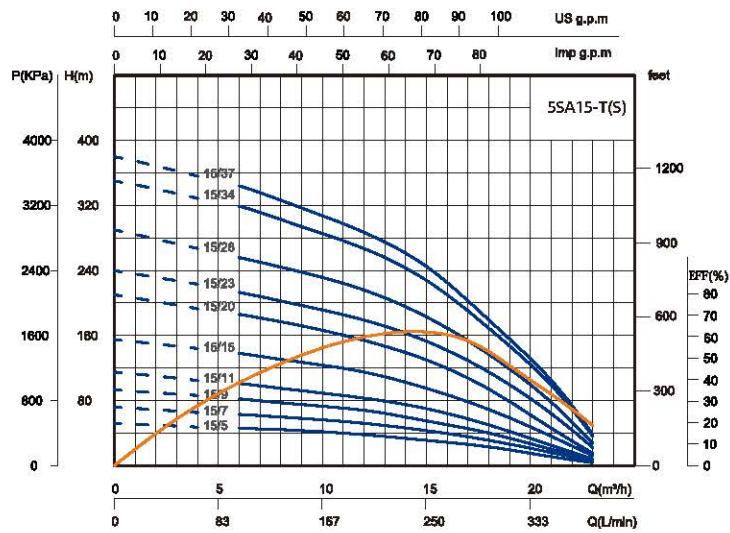
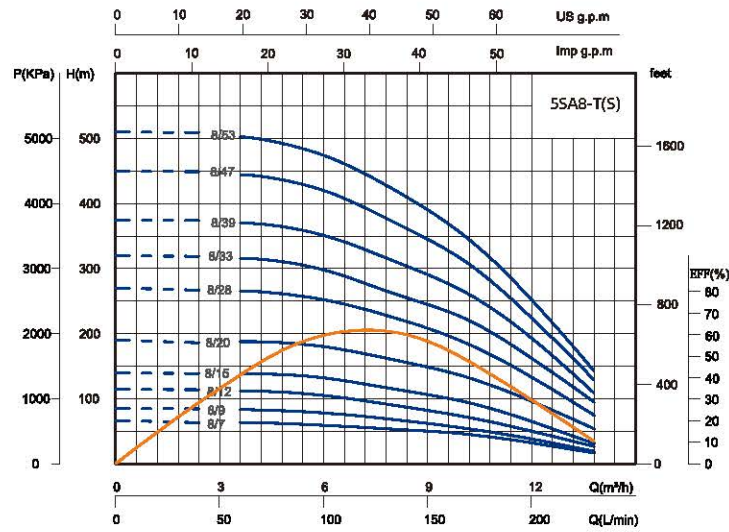


**Performance Curve**



Model	Power		Current (A)	Flow									Head Range (m)	20"LoadinE Qty(pcs)	
	Three-Phase	kW		HP	Three-Phase	m <sup>3</sup> /h	0	2	6	8	10	12			14
			380V		l/min	0	33	100	133	167	200	233			267
5SA8/7-1.5T	1.5	2.0	4.5	H(m)	66	65	59	53	46	32	15	2	65-29	580	
5SA8/9-2.2T	2.2	3.0	6		85	84	78	68	55	38	17	2	83-32	550	
5SA8/12-3T	3.0	4.0	8		115	113	105	90	73	50	24	2	113-44	500	
5SA8/15-4T	4.0	5.5	10		140	138	132	115	96	65	28	2	137-56	450	
5SA8/20-5.5T	5.5	7.5	13		190	188	180	160	135	96	49	2	186-50	390	
5SA8/28-7.5T	7.5	10.0	18		270	268	252	225	188	133	68	2	265-129	330	
5SA8/33-9.2T	9.2	12.5	21.5		320	318	298	262	225	162	87	2	313-161	280	
5SA8/39-11T	11.0	15.0	26		375	373	351	312	266	193	99	2	367-176	250	
5SA8/47-13T	13.0	17.5	30		450	448	420	372	314	224	118	2	441-225	220	
5SA8/53-15T	15.0	20.0	33.5		510	508	474	422	353	252	130	2	500-257	210	

Model	Power		Current (A)	Flow									Head Range (m)	20"LoadinE Qty(pcs)	
	Three-Phase	kW		HP	Three-Phase	m <sup>3</sup> /h	0	6	9	12	15	18			21
			380V		l/min	0	100	150	200	250	300	350			400
5SA15/5-1.5T	1.5	2.0	4.5	H(m)	52	46	43	38	31	23	11	2	48-20	600	
5SA15/7-2.2T	2.2	3.0	6		72	63	58	52	43	31	16	2	67-16	570	
5SA15/9-3T	3.0	4.0	8		93	82	75	68	55	40	20	2	85-28	520	
5SA15/11-4T	4.0	5.5	10		115	101	92	83	70	50	25	2	106-36	490	
5SA15/15-5.5T	5.5	7.5	13		155	138	127	115	95	69	36	2	147-43	420	
5SA15/20-7.5T	7.5	10.0	18		210	186	172	154	130	94	46	2	196-64	370	
5SA15/23-9.2T	9.2	12.5	21.5		240	213	197	179	153	115	64	2	229-84	340	
5SA15/28-11T	11.0	15.0	26		290	256	238	216	183	137	78	2	271-75	300	
5SA15/34-13T	13.0	17.5	30		350	319	294	267	228	169	99	2	343-98	250	
5SA15/37-15T	15.0	20.0	33.5		380	344	317	287	245	179	105	2	370-103	240	

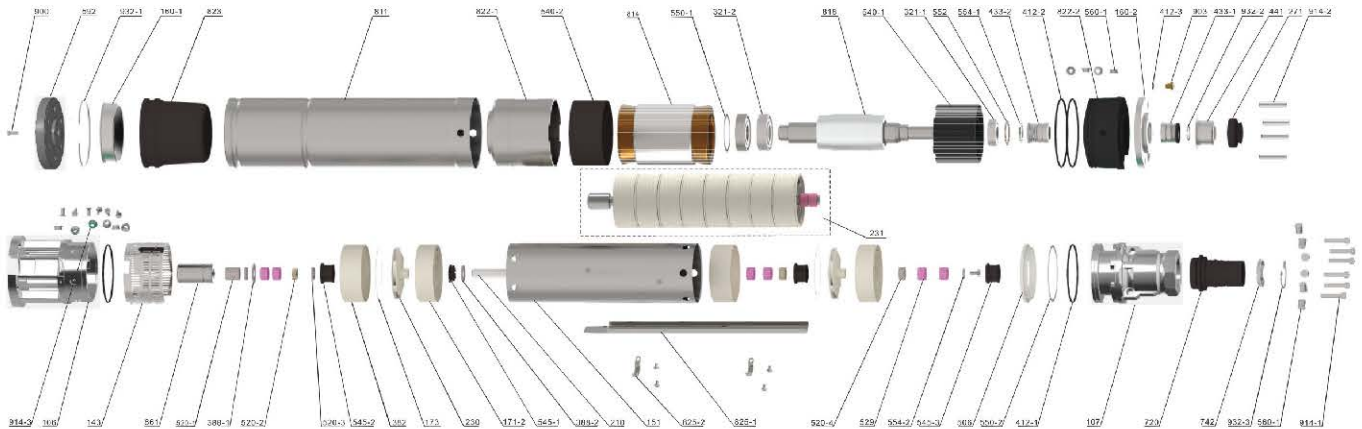
Model	Power		Current (A)	Flow									Head Range (m)	20"LoadinE Qty(pcs)	
	Three-Phase	kW		HP	Three-Phase	m <sup>3</sup> /h	0	6	12	18	25	28			32
			380V		l/min	0	100	200	300	416	467	533			633
5SA25/4-2.2T	2.2	3.0	6	H(m)	42	40	33	29	22	13	6	2	40-14	530	
5SA25/6-3T	3.0	4.0	8		61	59	51	44	33	27	17	2	59-16	470	
5SA25/7-4T	4.0	5.5	10		72	71	60	52	38	32	21	2	70-21	440	
5SA25/9-5.5T	5.5	7.5	13		95	91	78	68	50	42	29	2	91-27	390	
5SA25/12-7.5T	7.5	10.0	18		125	122	105	91	68	59	39	2	120-35	330	
5SA25/15-9.2T	9.2	12.5	21.5		155	153	131	113	88	74	48	2	152-48	290	
5SA25/18-11T	11.0	15.0	26		188	184	157	135	106	89	60	2	184-56	260	
5SA25/21-13T	13.0	17.5	30		220	215	183	159	125	104	64	2	214-68	230	
5SA25/24-15T	15.0	20.0	33.5		245	230	199	172	135	108	71	2	238-77	210	

Model	Power		Current (A)	Flow									Head Range (m)	20"LoadInE Qty(pcs)	
	Three-Phase	kW		HP	Three-Phase	m <sup>3</sup> /h	0	2	6	8	10	12			14
			380V		l/min	0	33	100	133	167	200	233			267
5SA8/7-1.5TS	1.5	2.0	4.5	H(m)		66	65	59	53	46	32	15	2	65-29	580
5SA8/9-2.2TS	2.2	3.0	6		85	84	78	68	55	38	17	2	83-32	550	
5SA8/12-3TS	3.0	4.0	8		115	113	105	90	73	50	24	2	113-44	500	
5SA8/15-4TS	4.0	5.5	10		140	138	132	115	96	65	28	2	137-56	450	
5SA8/20-5.5TS	5.5	7.5	13		190	188	180	160	135	96	49	2	186-50	390	
5SA8/28-7.5TS	7.5	10.0	18		270	268	252	225	188	133	68	2	265-129	330	
5SA8/33-9.2TS	9.2	12.5	21.5		320	318	298	262	225	162	87	2	313-161	280	
5SA8/39-11TS	11.0	15.0	26		375	373	351	312	266	193	99	2	367-176	250	
5SA8/47-13TS	13.0	17.5	30		450	448	420	372	314	224	118	2	441-225	220	
5SA8/53-15TS	15.0	20.0	33.5		510	508	474	422	353	252	130	2	500-257	210	

Model	Power		Current (A)	Flow									Head Range (m)	20"LoadInE Qty(pcs)	
	Three-Phase	kW		HP	Three-Phase	m <sup>3</sup> /h	0	6	9	12	15	18			21
			380V		l/min	0	100	150	200	250	300	350			400
5SA15/5-1.5TS	1.5	2.0	4.5	H(m)		52	46	43	38	31	23	11	2	48-20	600
5SA15/7-2.2TS	2.2	3.0	6		72	63	58	52	43	31	16	2	67-16	570	
5SA15/9-3TS	3.0	4.0	8		93	82	75	68	55	40	20	2	85-28	520	
5SA15/11-4TS	4.0	5.5	10		115	101	92	83	70	50	25	2	106-36	490	
5SA15/15-5.5TS	5.5	7.5	13		155	138	127	115	95	69	36	2	147-43	420	
5SA15/20-7.5TS	7.5	10.0	18		210	186	172	154	130	94	46	2	196-64	370	
5SA15/23-9.2TS	9.2	12.5	21.5		240	213	197	179	153	115	64	2	229-84	340	
5SA15/28-11TS	11.0	15.0	26		290	256	238	216	183	137	78	2	271-75	300	
5SA15/34-13TS	13.0	17.5	30		350	319	294	267	228	169	99	2	343-98	250	
5SA15/37-15TS	15.0	20.0	33.5		380	344	317	287	245	179	105	2	370-103	240	

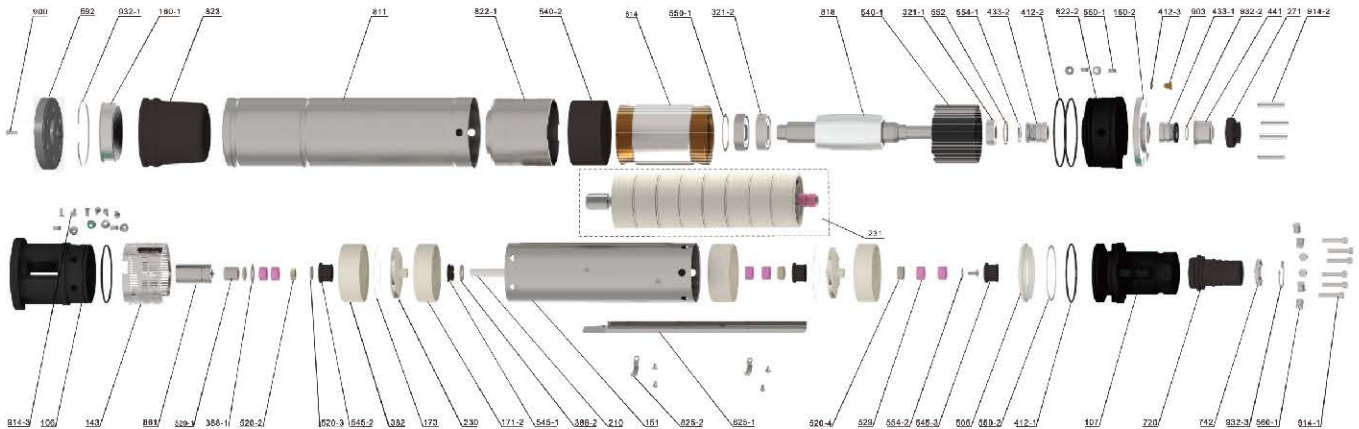
Model	Power		Current (A)	Flow									Head Range (m)	20"LoadInE Qty(pcs)	
	Three-Phase	kW		HP	Three-Phase	m <sup>3</sup> /h	0	6	12	18	25	28			32
			380V		l/min	0	100	200	300	416	467	533			633
5SA25/4-2.2TS	2.2	3.0	6	H(m)		42	40	33	29	22	13	6	2	40-14	530
5SA25/6-3TS	3.0	4.0	8		61	59	51	44	33	27	17	2	59-16	470	
5SA25/7-4TS	4.0	5.5	10		72	71	60	52	38	32	21	2	70-21	440	
5SA25/9-5.5TS	5.5	7.5	13		95	91	78	68	50	42	29	2	91-27	390	
5SA25/12-7.5TS	7.5	10.0	18		125	122	105	91	68	59	39	2	120-35	330	
5SA25/15-9.2TS	9.2	12.5	21.5		155	153	131	113	88	74	48	2	152-48	290	
5SA25/18-11TS	11.0	15.0	26		188	184	157	135	106	89	60	2	184-56	260	
5SA25/21-13TS	13.0	17.5	30		220	215	183	159	125	104	64	2	214-68	230	
5SA25/24-15TS	15.0	20.0	33.5		245	230	199	172	135	108	71	2	238-77	210	

## Components & Materials



No.	Part name	No.	Part name	No.	Part name
106	Water inlet joint	506	Press-out chamber gasket ring	818	rotor
107	Press-out chamber	520-1	Spacer sleeve	822-1	Lower bearing seat
143	Net cover	520-2	Spacer sleeve	822-2	Oil chamber
151	Sleeve	520-3	Spacer sleeve	823	Pressure regulating membrane
160-1	Bottom cover	520-4	Spacer sleeve	825-1	Cable pressing plate
160-2	Cover plate	529	axle sleeve	825-2	Small pressing plate
171-2	Guide vane	540-1	Upper gear sleeve	861	coupling
173	Guide vane cover plate	540-2	Lower gear sleeve	900	Hexagon headed bolt
210	Pump shaft	545-1	Guide vane insert	903	Bleed cock
230	impeller	545-2	Intermediate rubber bearing	914-1	Hexagon socket head cap screw
231	Impeller string	545-3	Rubber bearing	914-2	Hexagon socket flat point set screw
271	Sand trap	550-1	Adjusting shim	914-3	Hexagon socket countersunk head screw
321-1	Deep groove ball bearing	550-2	Adjusting shim	932-1	Retaining ring
321-2	Angular contact bearing	552	Wave spring	932-2	External Circlips
382	Intermediate bearing seat	554-1	Flat washer	932-3	Retaining ring
388-1	Thrust plate	554-2	Flat washer		
388-2	Friction pad	560-1	Locating pin		
412-1	O-ring	560-2	Locating sleeve		
412-2	O-ring	592	base		
412-3	O-ring	720	Outlet joint		
433-1	Mechanical seal	742	Bonnet		
433-2	Mechanical seal	811	Casing		
441	Stainless steel sleeve	814	Winding stator core		

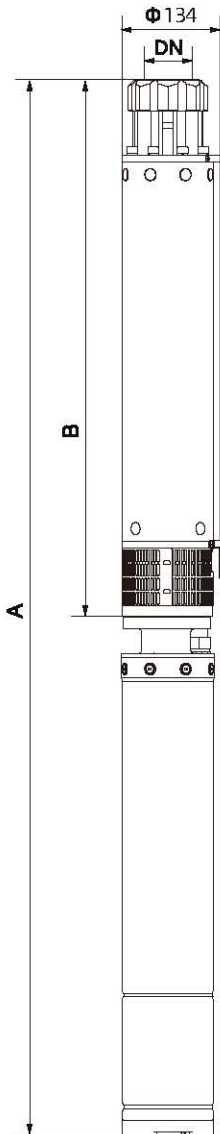
## Components & Materials



No.	Part name	No.	Part name	No.	Part name
106	Water inlet joint	506	Press-out chamber gasket ring	818	rotor
107	Press-out chamber	520-1	Spacer sleeve	822-1	Lower bearing seat
143	Net cover	520-2	Spacer sleeve	822-2	Oil chamber
151	Sleeve	520-3	Spacer sleeve	823	Pressure regulating membrane
160-1	Bottom cover	520-4	Spacer sleeve	825-1	Cable pressing plate
160-2	Cover plate	529	axle sleeve	825-2	Small pressing plate
171-2	Guide vane	540-1	Upper gear sleeve	861	coupling
173	Guide vane cover plate	540-2	Lower gear sleeve	900	Hexagon headed bolt
210	Pump shaft	545-1	Guide vane insert	903	Bleed cock
230	impeller	545-2	Intermediate rubber bearing	914-1	Hexagon socket head cap screw
231	Impeller string	545-3	Rubber bearing	914-2	Hexagon socket flat point set screw
271	Sand trap	550-1	Adjusting shim	914-3	Hexagon socket countersunk head screw
321-1	Deep groove ball bearing	550-2	Adjusting shim	932-1	Retaining ring
321-2	Angular contact bearing	552	Wave spring	932-2	External Circlips
382	Intermediate bearing seat	554-1	Flat washer	932-3	Retaining ring
388-1	Thrust plate	554-2	Flat washer		
388-2	Friction pad	560-1	Locating pin		
412-1	O-ring	560-2	Locating sleeve		
412-2	O-ring	592	base		
412-3	O-ring	720	Outlet joint		
433-1	Mechanical seal	742	Bonnet		
433-2	Mechanical seal	811	Casing		
441	Stainless steel sleeve	814	Winding stator core		

## Dimensions & Weight

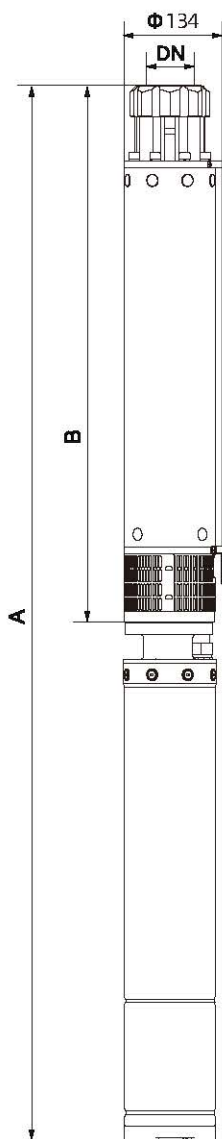
Model	Pipe Connection (DN)	Dim. (mm)		N.W.(kg)	
		B	A Three-phase	Body(kg)	Motor(kg) M(Single-phase)
5SA8/7-1.5T	G2	595	1084	9.0	22
5SA8/9-2.2T		667	1171	10.0	23
5SA8/12-3T		775	1304	11.0	25
5SA8/15-4T		922	1476	13.0	27
5SA8/20-5.5T		1102	1724	15.5	34
5SA8/28-7.5T		1428	2120	19.5	40
5SA8/33-9.2T		1820	2582	27.0	46
5SA8/39-11T		2036	2868	30.0	52
5SA8/47-13T		2400	3297	35.0	58
5SA8/53-15T		2616	3563	37.0	63



Model	Pipe Connection (DN)	Dim. (mm)		N.W.(kg)	
		B	A Three-phase	Body(kg)	Motor(kg) M(Single-phase)
5SA15/5-1.5T	G2	544	1033	8.0	22
5SA15/7-2.2T		626	1130	9.0	23
5SA15/9-3T		705	1234	10.0	25
5SA15/11-4T		785	1339	11.0	27
5SA15/15-5.5T		984	1606	14.0	34
5SA15/20-7.5T		1184	1876	16.0	40
5SA15/23-9.2T		1304	2066	18.0	46
5SA15/28-11T		1543	2375	21.0	52
5SA15/34-13T		1994	2891	29.0	58
5SA15/37-15T		2112	3059	30.0	63

Model	Pipe Connection (DN)	Dim. (mm)		N.W.(kg)	
		B	A Three-phase	Body(kg)	Motor(kg) M(Single-phase)
5SA25/4-2.2T	G2.5	723	1227	10.0	23
5SA25/6-3T		893	1422	12.5	25
5SA25/7-4T		978	1532	14.0	27
5SA25/9-5.5T		1147	1769	16.0	34
5SA25/12-7.5T		1402	2094	19.5	40
5SA25/15-9.2T		1696	2458	23.0	46
5SA25/18-11T		1950	2782	27.0	52
5SA25/21-13T		2205	3102	30.0	58
5SA25/24-15T		2460	3407	33.0	63

## Dimensions & Weight



Model	Pipe Connection (DN)	Dim. (mm)		N.W.(kg)	
		B	A Three-phase	Body(kg)	Motor(kg) M(Single-phase)
SSA8/7-1.5TS	G2	595	1084	10.0	22
SSA8/9-2.2TS		667	1171	11.0	23
SSA8/12-3TS		775	1304	12.5	25
SSA8/15-4TS		922	1476	14.0	27
SSA8/20-5.5TS		1102	1724	17.0	34
SSA8/28-7.5TS		1428	2120	21.0	40
SSA8/33-9.2TS		1820	2582	29.0	46
SSA8/39-11TS		2036	2868	32.0	52
SSA8/47-13TS		2400	3297	37.0	58
SSA8/53-15TS		2616	3563	38.0	63

Model	Pipe Connection (DN)	Dim. (mm)		N.W.(kg)	
		B	A Three-phase	Body(kg)	Motor(kg) M(Single-phase)
SSA15/5-1.5TS	G2	544	1033	9.5	22
SSA15/7-2.2TS		626	1130	10.0	23
SSA15/9-3TS		705	1234	11.0	25
SSA15/11-4TS		785	1339	12.0	27
SSA15/15-5.5TS		984	1606	15.0	34
SSA15/20-7.5TS		1184	1876	17.5	40
SSA15/23-9.2TS		1304	2066	19.5	46
SSA15/28-11TS		1543	2375	23.0	52
SSA15/34-13TS		1994	2891	30.0	58
SSA15/37-15TS		2112	3059	32.0	63

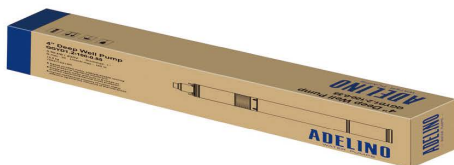
Model	Pipe Connection (DN)	Dim. (mm)		N.W.(kg)	
		B	A Three-phase	Body(kg)	Motor(kg) M(Single-phase)
SSA25/4-2.2TS	G2.5	723	1227	12.0	23
SSA25/6-3TS		893	1422	14.0	25
SSA25/7-4TS		978	1532	15.0	27
SSA25/9-5.5TS		1147	1769	17.0	34
SSA25/12-7.5TS		1402	2094	21.0	40
SSA25/15-9.2TS		1696	2458	25.0	46
SSA25/18-11TS		1950	2782	28.0	52
SSA25/21-13TS		2205	3102	32.0	58
SSA25/24-15TS		2460	3407	34.0	63

## Packing Size & Weight

Model	Dim. (mm)		G. W. (kg)	20" LoadinE Qty.(pcs)
	Three-phase	Motor(L*W*H)		
5SA8/7-1.5T	730x150x150	740x150x150	39.0	580
5SA8/9-2.2T	730x150x150	800x150x150	42.0	550
5SA8/12-3T	760x150x150	910x150x150	45.0	500
5SA8/15-4T	780x150x150	1040x150x150	50.0	450
5SA8/20-5.5T	865x150x150	1230x150x150	60.0	390
5SA8/28-7.5T	920x150x150	1550x150x150	71.0	330
5SA8/33-9.2T	1000x150x150	1940x150x150	88.0	280
5SA8/39-11T	1060x150x150	2170x150x150	98.0	250
5SA8/47-13T	1130x150x150	2530x150x150	109.0	220
5SA8/53-15T	1190x150x150	2750x150x150	117.0	210

Model	Dim. (mm)		G. W. (kg)	20" LoadinE Qty.(pcs)
	Three-phase	Motor(L*W*H)		
5SA15/5-1.5T	730x150x150	670x150x150	39.0	600
5SA15/7-2.2T	730x150x150	760x150x150	41.0	570
5SA15/9-3T	760x150x150	840x150x150	44.0	520
5SA15/11-4T	780x150x150	910x150x150	47.0	490
5SA15/15-5.5T	865x150x150	1110x150x150	57.0	420
5SA15/20-7.5T	920x150x150	1320x150x150	67.0	370
5SA15/23-9.2T	1000x150x150	1450x150x150	76.0	340
5SA15/28-11T	1060x150x150	1670x150x150	87.0	300
5SA15/34-13T	1130x150x150	2130x150x150	101.0	250
5SA15/37-15T	1190x150x150	2250x150x150	109.0	240

Model	Dim. (mm)		G. W. (kg)	20" LoadinE Qty.(pcs)
	Three-phase	Motor(L*W*H)		
5SA25/4-2.2T	730x150x150	860x150x150	42.0	530
5SA25/6-3T	760x150x150	1020x150x150	46.0	470
5SA25/7-4T	780x150x150	1110x150x150	51.0	440
5SA25/9-5.5T	865x150x150	1270x150x150	61.0	390
5SA25/12-7.5T	920x150x150	1550x150x150	71.0	330
5SA25/15-9.2T	1000x150x150	1850x150x150	83.0	290
5SA25/18-11T	1060x150x150	2080x150x150	94.0	260
5SA25/21-13T	1130x150x150	2340x150x150	104.0	230
5SA25/24-15T	1190x150x150	2580x150x150	113.0	210





## Packing Size & Weight

Model	Dim. (mm)		G.W.(kg)	20*LoadInE Qty.(pcs)	
	Three-phase	Motor(L*W*H)			Body(L*W*H)
5SA8/7-1.5TS		730×150×150	740×150×150	41.0	580
5SA8/9-2.2TS		730×150×150	800×150×150	43.0	550
5SA8/12-3TS		760×150×150	910×150×150	46.0	500
5SA8/15-4TS		780×150×150	1040×150×150	51.0	450
5SA8/20-5.5TS		865×150×150	1230×150×150	61.0	400
5SA8/28-7.5TS		920×150×150	1550×150×150	73.0	330
5SA8/33-9.2TS		1000×150×150	1940×150×150	90.0	280
5SA8/39-11TS		1060×150×150	2170×150×150	99.0	250
5SA8/47-13TS		1130×150×150	2530×150×150	111.0	220
5SA8/53-15TS		1190×150×150	2750×150×150	119.0	210

Model	Dim. (mm)		G.W.(kg)	20*LoadInE Qty.(pcs)	
	Three-phase	Motor(L*W*H)			Body(L*W*H)
5SA15/5-1.5TS		730×150×150	670×150×150	40.0	600
5SA15/7-2.2TS		730×150×150	760×150×150	42.0	570
5SA15/9-3TS		760×150×150	840×150×150	45.0	520
5SA15/11-4TS		780×150×150	910×150×150	51.0	490
5SA15/15-5.5TS		865×150×150	1110×150×150	59.0	420
5SA15/20-7.5TS		920×150×150	1320×150×150	68.0	370
5SA15/23-9.2TS		1000×150×150	1450×150×150	77.0	340
5SA15/28-11TS		1060×150×150	1670×150×150	88.0	300
5SA15/34-13TS		1130×150×150	2130×150×150	103.0	250
5SA15/37-15TS		1190×150×150	2250×150×150	111.0	240

Model	Dim. (mm)		G.W.(kg)	20*LoadInE Qty.(pcs)	
	Three-phase	Motor(L*W*H)			Body(L*W*H)
5SA25/4-2.2TS		730×150×150	860×150×150	44.0	530
5SA25/6-3TS		760×150×150	1020×150×150	48.0	470
5SA25/7-4TS		780×150×150	1110×150×150	52.0	440
5SA25/9-5.5TS		865×150×150	1270×150×150	62.0	390
5SA25/12-7.5TS		920×150×150	1550×150×150	73.0	330
5SA25/15-9.2TS		1000×150×150	1850×150×150	85.0	290
5SA25/18-11TS		1060×150×150	2080×150×150	95.0	260
5SA25/21-13TS		1130×150×150	2340×150×150	106.0	230
5SA25/24-15TS		1190×150×150	2580×150×150	114.0	210

