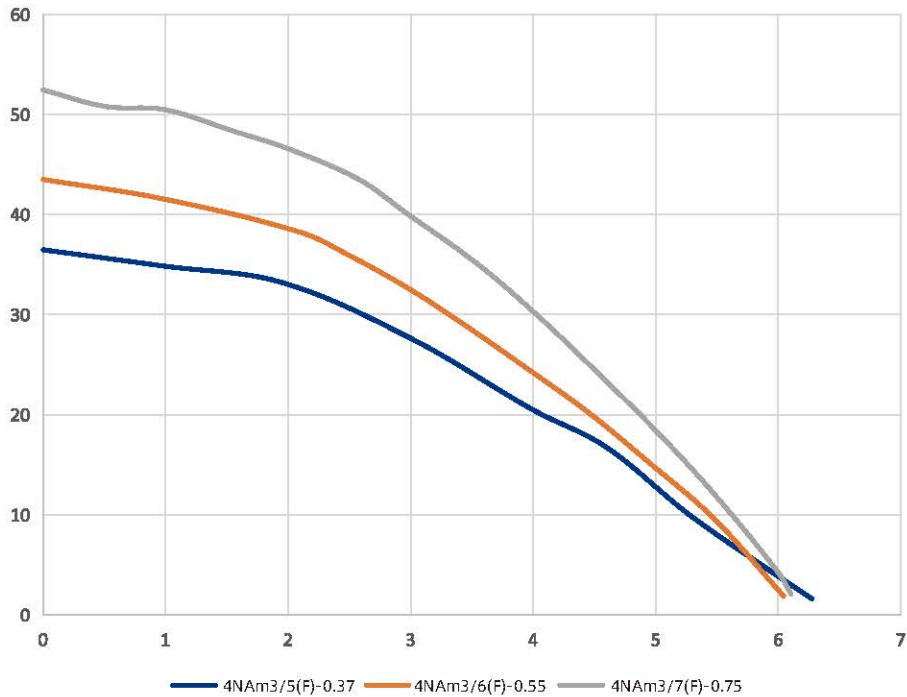
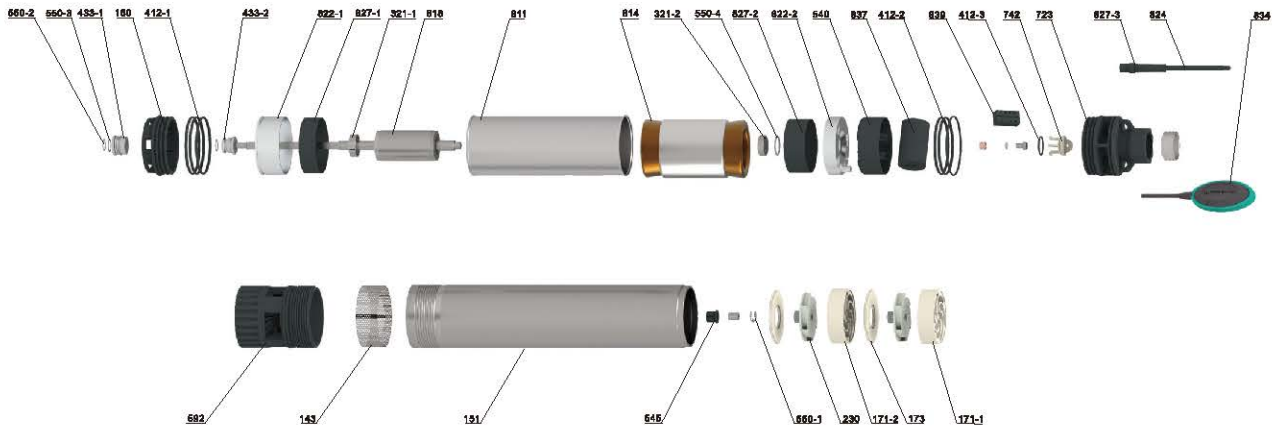


## Performance Curve



Model	Power		Flow								Head Range (m)	
	Single-Phase	kW	HP	m <sup>3</sup> /h	0	1.2	2.4	3	3.6	4.2		4.8
220V				l/min	0	20	40	50	60	70	80	
4NAm3/5-0.37	0.37	0.5	H(m)		36	34	30	27	24	18	13	35 ~ 16
4NAm3/6-0.55	0.55	0.75			45	40	35	33	28	22	17	42 ~ 20
4NAm3/7-0.75	0.75	1			52	50	44	39	34	27	23	50 ~ 25
4NAm3/5F-0.37	0.37	0.5			36	34	30	27	24	18	13	35 ~ 16
4NAm3/6F-0.55	0.55	0.75			45	40	35	33	28	22	17	42 ~ 20
4NAm3/7F-0.75	0.75	1			52	50	44	39	34	27	23	50 ~ 25

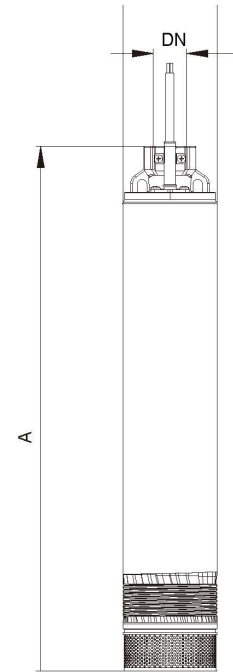
## Components & Materials



No.	Part name	No.	Part name	No.	Part name
143	Net cover	540	Upper spacer sleeve	814	Stator core with winding
151	Sleeve	545	Middle rubber bearing	818	Rotor
160	Chassis	550-1	Adjusting washer	822-1	Lower bearing block
171-1	Guide vane	550-2	Adjusting washer	822-2	Oil chamber
171-2	Guide vane	550-3	Flat washer	824	Cable
173	Guide vane cover plate	550-4	Wave spring	827-1	Insulating paper
230	Impeller	433-1	Mechanical seal	827-2	Insulating paper
321-1	Deep groove ball bearing	433-2	Mechanical seal	827-3	Cable sheath
321-2	Angular contact bearing	592	Base	834	Float switch with cable
412-1	O-ring	723	Top cover	837	Capacitor
412-2	O-ring	742	Bonnet	839	Terminals
412-3	O-ring	811	Casing		

## Dimensions & Weight

Model	Dim. (mm) Pump(L×W×H) Single-phase	G.W.(kg)	Discharge(In)	20"Loading Qty(pcs)
Single-phase		Single-Phase		
4NAm3/5-0.37	710×145×150	8.1	G1 1/4	1100
4NAm3/6-0.55	760×145×150	8.8	G1 1/4	1000
4NAm3/7-0.75	810×145×150	9.9	G1 1/4	950
4NAm3/5F-0.37	785×145×150	8.4	G1 1/4	1100
4NAm3/6F-0.55	830×145×150	9.1	G1 1/4	1000
4NAm3/7F-0.75	880×145×150	10.2	G1 1/4	950



## Packing Size & Weight

Model	Pipe Connedion (DN)Inch	Dim. (mm)	N.W.(kg)
Single-phase		A(Single-phase)	Body(kg)
4NAm3/5-0.37	G1¼	617	7.1
4NAm3/6-0.55		671	7.8
4NAm3/7-0.75		569	8.9
4NAm3/5F-0.37		617	7.4
4NAm3/6F-0.55		671	8.1
4NAm3/7F-0.75		569	9.2

