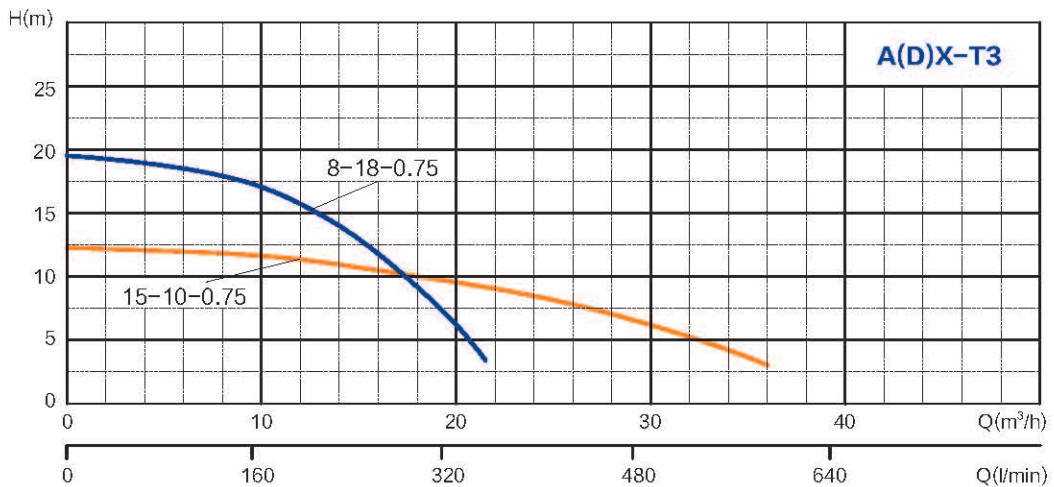
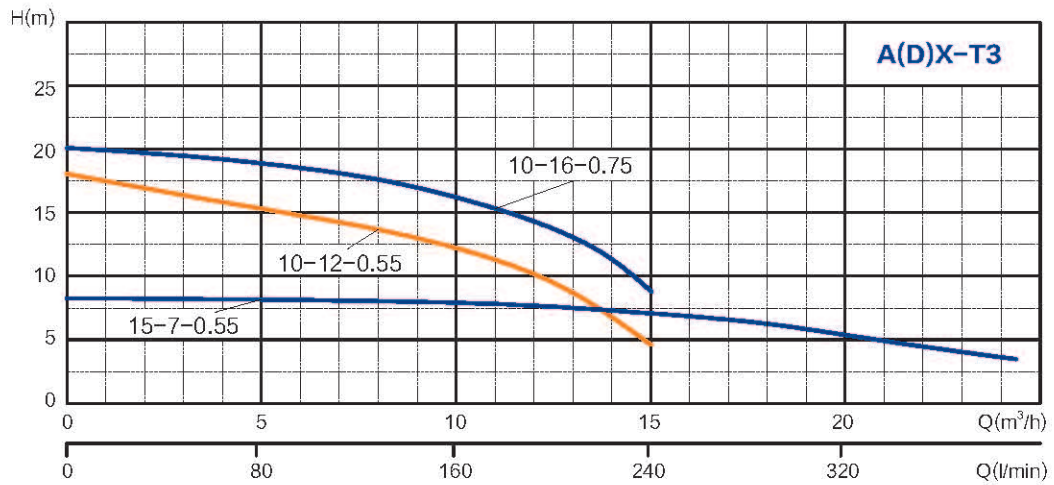
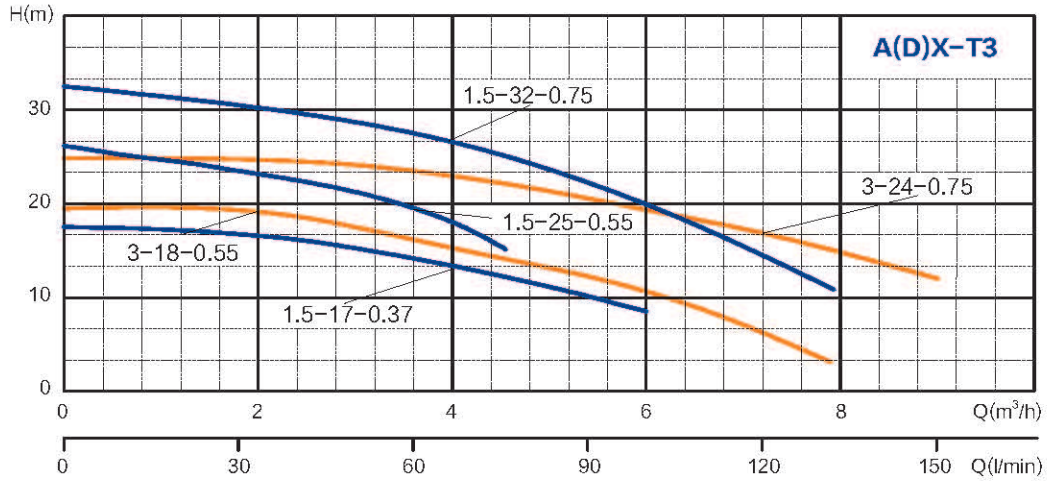
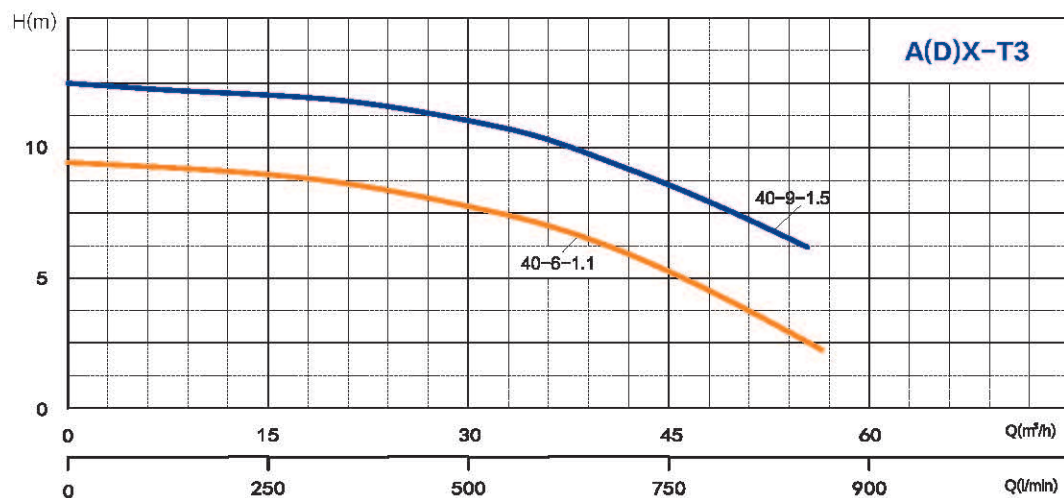
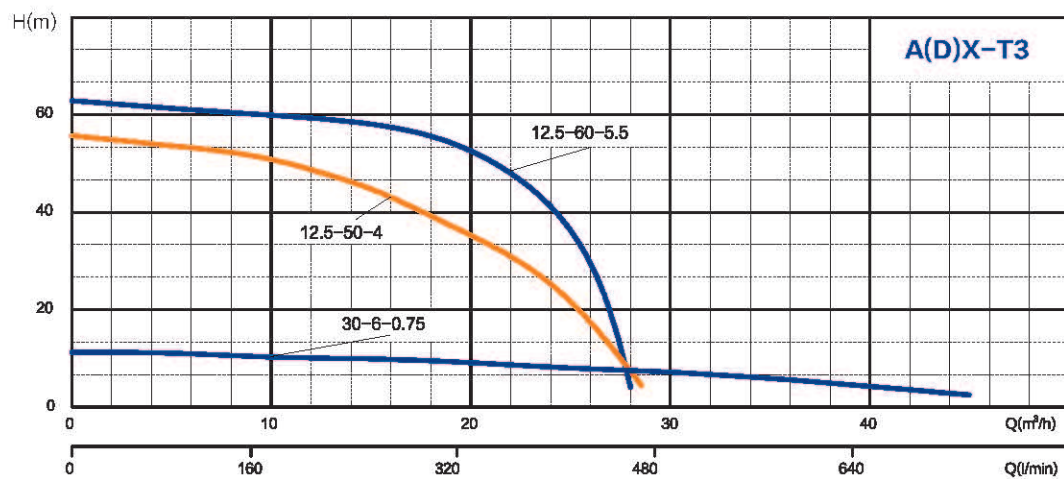
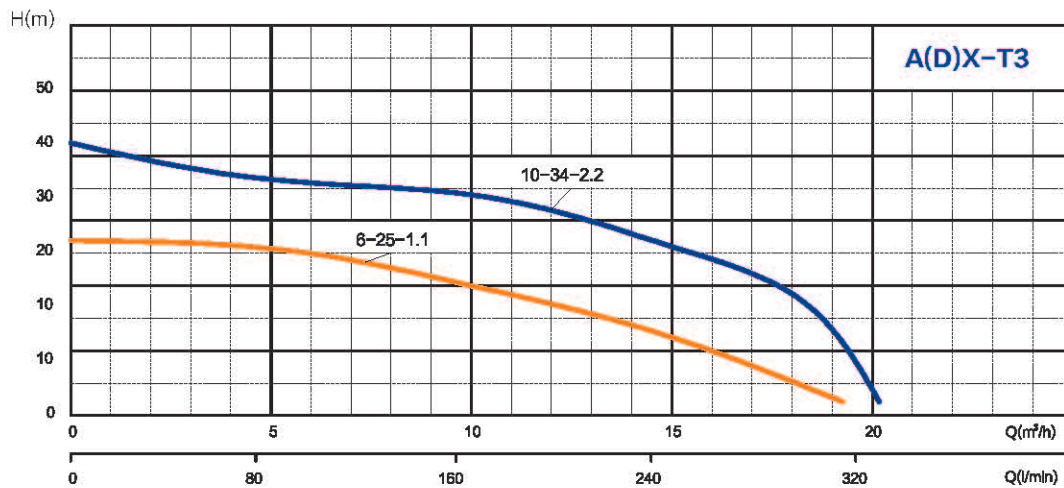


**Performance Curve**

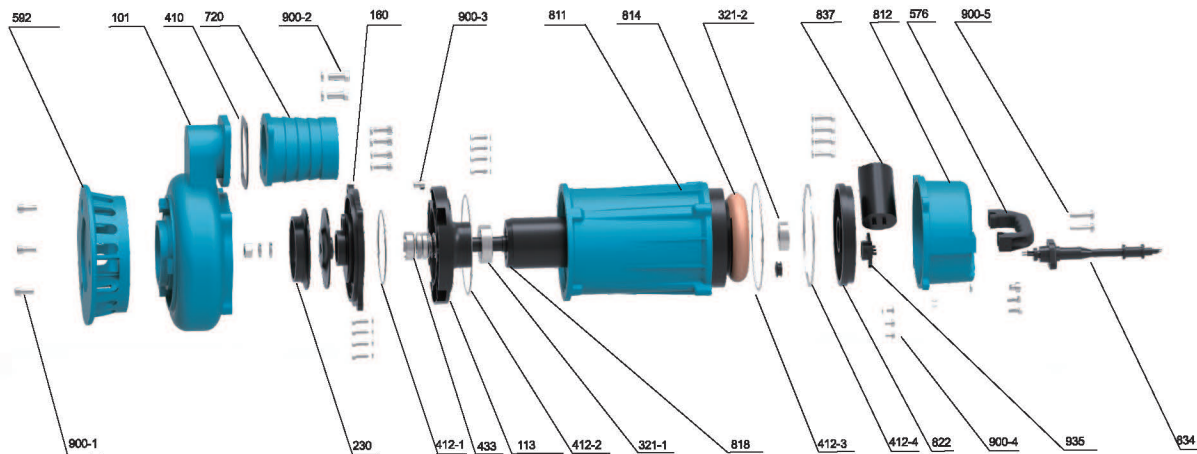


Performance Curve



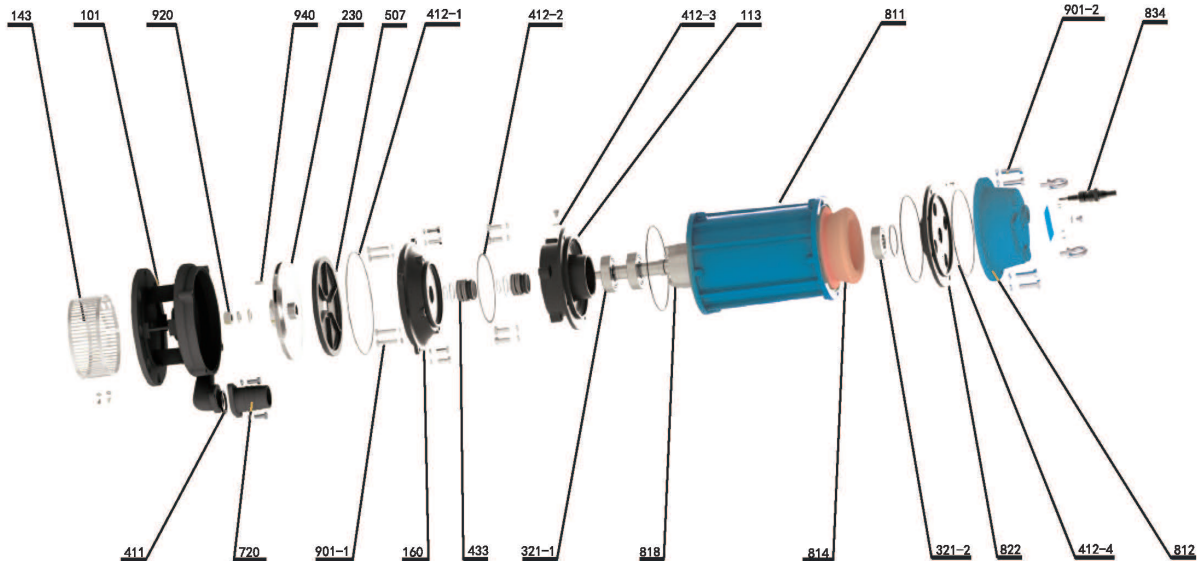
Model		Power		Rate Current (A)	Max. Flow (m <sup>3</sup> /h)	Max. Head (m)	Head Range (m)	Cable line (mm <sup>2</sup> -m)	Packing Dim. L×W×H(mm)	G.W (kg)	20'Loading Qty. (pcs)	DN
Single-Phase	Three-Phase	kW	HP									
220V	380V											
ADX1.5-17-0.37T3(F)	-	0.37	0.5	2.9	6	18	18-7	3×0.75-8	370×220×195	11.5	1872	G¾
ADX1.5-25-0.55T3(F)	-	0.55	0.75	4.1	6.5	26	26-15	3×0.75-8	455×285×225	15	1000	G¾
ADX15-7-0.55T3(F)	-	0.55	0.75	4.1	25.2	8	8-3	3×0.75-8	450×280×210	16.5	1155	G1½
ADX1.5-32-0.75T3	-	0.75	1	5.2	6	33	32-6	3×0.75-8	455×285×225	17	1000	G¾
ADX3-24-0.75T3	-	0.75	1	5.2	7.2	26	26-9	3×0.75-8	455×285×225	16.5	1000	G1
ADX8-18-0.75T3	-	0.75	1	5.2	19	20	20-3	3×0.75-8	450×280×210	17	1155	G1¼
ADX10-16-0.75T3(F)	-	0.75	1	5.2	19	20	20-3	3×0.75-8	450×280×210	17	1155	G1½
ADX30-6-0.75T3(F)	-	0.75	1	5.2	45	9	9-2	3×0.75-8	450×280×210	20	1155	G2½
ADX6-25-1.1T3	-	1.1	1.5	7.3	17	25	25-3	3×1-8	480×285×220	21	960	G1½
ADX40-6-1.1T3	-	1.1	1.5	7.3	58	10	10-2	3×1-8	480×285×220	24	960	G2½
-	AX6-25-1.1T3	1.1	1.5	2.7	17	25	25-3	4×0.75-15	480×285×220	20	960	G1½
-	AX10-34-2.2	2.2	3	5.1	17	41	18-36	3×1-15	575x 250x 323	39	480	G1½
-	AX12.5-50-4	4.0	5.5	8.8	28	56	35-53	3×1.5+1×1 ☆ -15	840x315x 360	75	180	G1½
-	AX12.5-60-5.5	5.5	7.5	11.7	28	64	50-61	3×1.5+1×1 ☆ -15	890x315x 360	87	180	G1½

## Components & Materials



No.	Part name	No.	Part name
101	Pump body	720	Outlet joint
113	Oil chamber	811	Enclosure
160	Oil chamber cover	812	Head cover
230	Impeller	814	Stator core with winding
321-1	Deep groove ball bearing	818	Rotor
321-2	Deep groove ball bearing	822	Top chock
410	Rubber gasket	834	Cable protector
412-1	O ring seal	837	Capacitor
412-2	O ring seal	900-1	Hexagon socket head screw
412-3	O ring seal	900-2	Hexagon bolt
412-4	O ring seal	900-3	Slotted cheese-head screw
433	Mechanical seal	900-4	Cross recessed flange screw
576	Lifting handle	900-5	Cross recessed pan head screw
592	Pedestal		

## Components & Materials



No.	Part name	No.	Part name
101	Pump body	550	Mechanical seal ring
113	Lower bearing block	720	Outlet joint
143	Net cover	811	Casing
160	Oil chamber cover	812	Head cover
230	Impeller	814	Stator core with winding
321-1	Deep groove ball bearing	818	Rotor
321-2	Deep groove ball bearing	822	Upper bearing block
411	Rubber washer	834	Cable connection sleeve
412-1	O-ring	901-1	Hexagon head bolt
412-2	O-ring	901-2	Hexagon head bolt
412-3	O-ring	920	Hexagon nut - Style 1
412-4	O-ring	940	Ordinary flat type
433	Mechanical seal		
507	Water baffle		

## Dimensions & Weight

Model		Dim.(mm)			N.W. (kg)
Single-Phase	Three-Phase	A	B	DN	
ADX1.5-17-0.37T3	-	195	348	25mm(G¾)	10.5
ADX1.5-25-0.55T3	-	220	375	25mm(G¾)	14.0
ADX15-7-0.55T3	-	235	390	50mm(G1½)	15.5
ADX1.5-32-0.75T3	-	240	395	25mm(G¾)	16.0
ADX3-24-0.75T3	-	210	390	32mm(G1)	15.5
ADX8-18-0.75T3	-	230	395	40mm(G1¼)	16.0
ADX10-16-0.75T3	-	230	395	50mm(G1½)	16.0
ADX30-6-0.75T3	-	265	420	80mm(G2½)	19.0
ADX6-25-1.1T3	-	240	427	50mm(G1½)	20.0
ADX40-6-1.1T3	-	460	205	80mm(G2½)	23.0
-	AX6-25-1.1T3	240	427	50mm(G1½)	19.0
-	AX10-34-2.2T	495	273	50mm(G1½)	35
-	AX12.5-50-4T	598	318	50mm(G1½)	65
-	AX12.5-60-5.5T	643	318	50mm(G1½)	75

