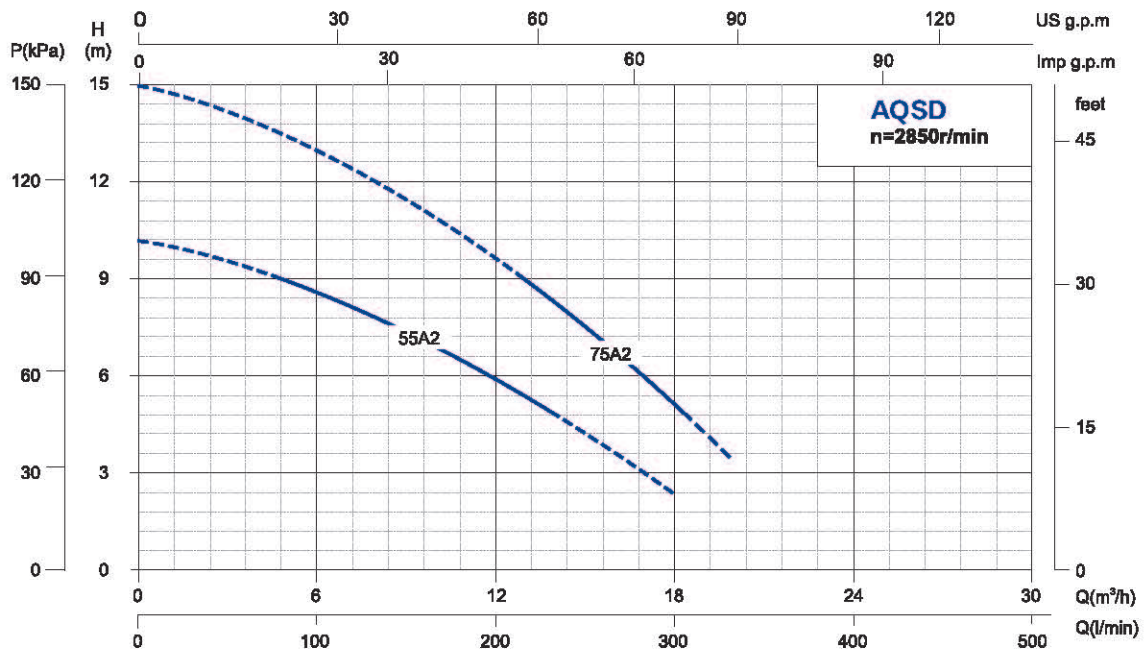
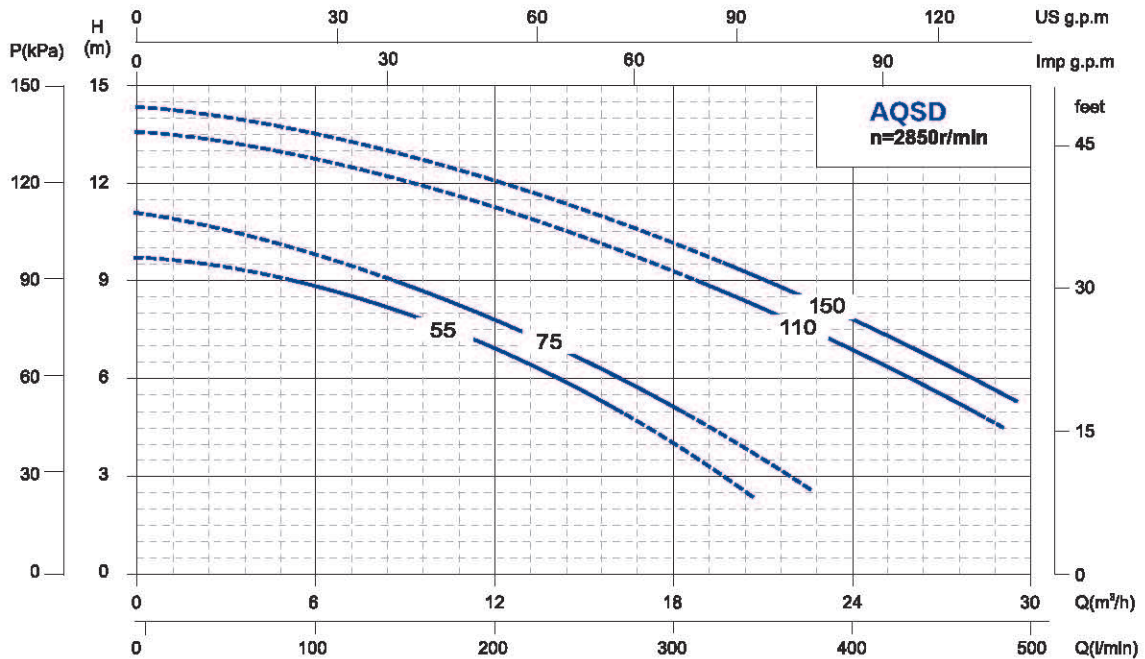


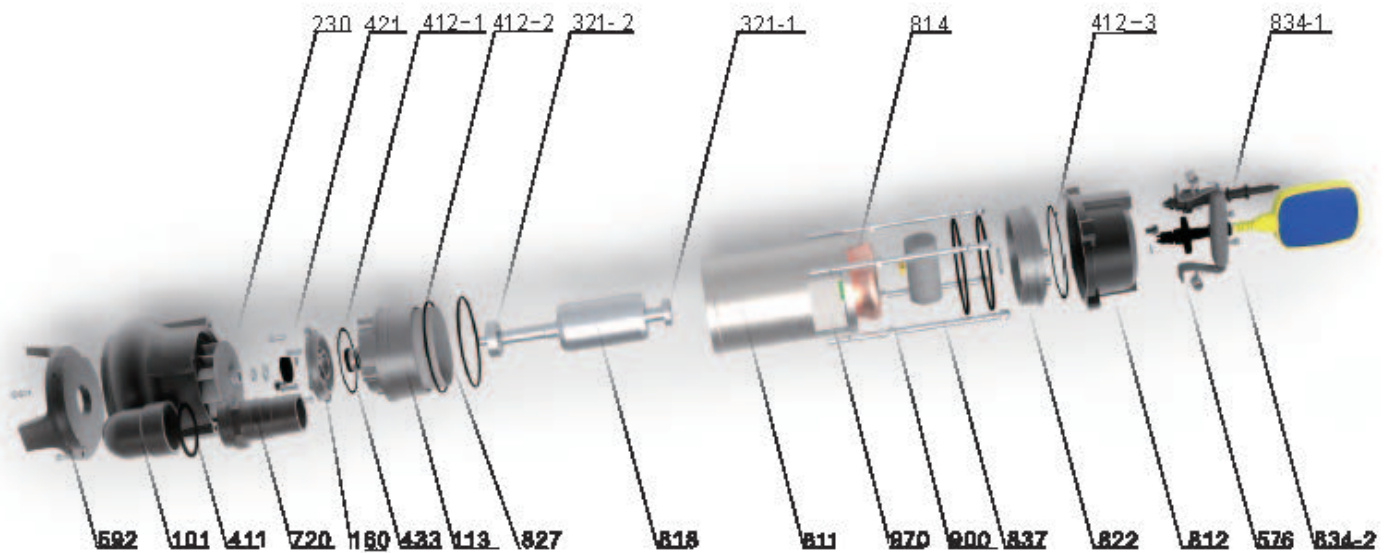
Performance Curve



Model		Power		Rate Current (A)	Max. Flow (m <sup>3</sup> /h)	Max. Head (m)	Head Range (m)	Solids Passage (mm)	Cable line (m)	Dim. mm (LxWxH)	G.W (kg)	20' Loading Qty. (pcs)
Single-Phase	Three-Phase	kw	HP									
-	AQS75	0.75	1	2	21	12	11~5	40	4x0.75-5	260x190x500	18.5	1056
-	AQS110	1.1	1.5	2.7	27	13	12~7	40	4x0.75-5	285x205x505	21	880
-	AQS150	1.5	2	3.6	30	14	14~5	40	4x0.75-5	285x205x530	25	840
AQSD55F	-	0.55	0.75	4.1	18	10	9~4	40	3x0.75-5	260x190x480	17	1056
AQSD75F	-	0.75	1	5.2	21	12	11~5	40	3x1-5	260x190x500	19	1056
AQSD110F	-	1.1	1.5	7.3	27	13	12~7	40	3x1.5-5	285x205x505	23	880
AQSD150F	-	1.5	2	9.5	30	14	14~5	40	3x1.5-5	285x205x530	25.5	840
AQSD55A2F	-	0.55	0.75	4.1	18	13	10~4	10	3x0.75-5	260x190x450	17	1320
AQSD75A2F	-	0.75	1	5.2	20	15	14~5	10	3x1-5	260x190x470	19	1056
-	AQS75A2	0.75	1	2	20	15	14~5	10	4x0.75-5	260x190x470	19	1056

Centrifugal pumps are not recommended to be used less than the lift range.

## Components & Materials



No.	Part name	No.	Part name	No.	Part name
101	Pump body	412-3	O-ring	818	Rotor
113	Oil chamber	421	Framework oil seal	822	Upper bearing block
160	Net cover	433	Mechanical seal	827	Insulating paper
230	Oil chamber cover	576	Handle	834-1	Cable
321-1	Impeller	592	Base	834-2	Floating ball
321-2	Deep groove ball bearing	720	Outlet joint	837	Running capacitor
411	Deep groove ball bearing	811	Casing	900	Equal head double end stud
412-1	O-ring	812	Head cover	970	Nameplate
412-2	O-ring	814	Stator core with winding		

## Dimensions & Weight

Model		Dim.(mm)					N.W. (kg)
Single-Phase	Three-Phase	A	B	L0	H0	DN	
-	AQS75	220	460	79	67	2"	17.5
-	AQS110	245	475	90	83	2"	20
-	AQS150	245	500	90	83	2"	22
AQSD55F	-	220	440	79	67	2"	16
AQSD75F	-	220	460	79	67	2"	18
AQSD110F	-	245	475	90	83	2"	22
AQSD150F	-	245	500	90	83	2"	24
AQSD55A2F	-	225	435	80	89	2"	16
AQSD75A2F	-	225	455	80	89	2"	18
-	AQS75A2	225	455	80	89	2"	17.5

