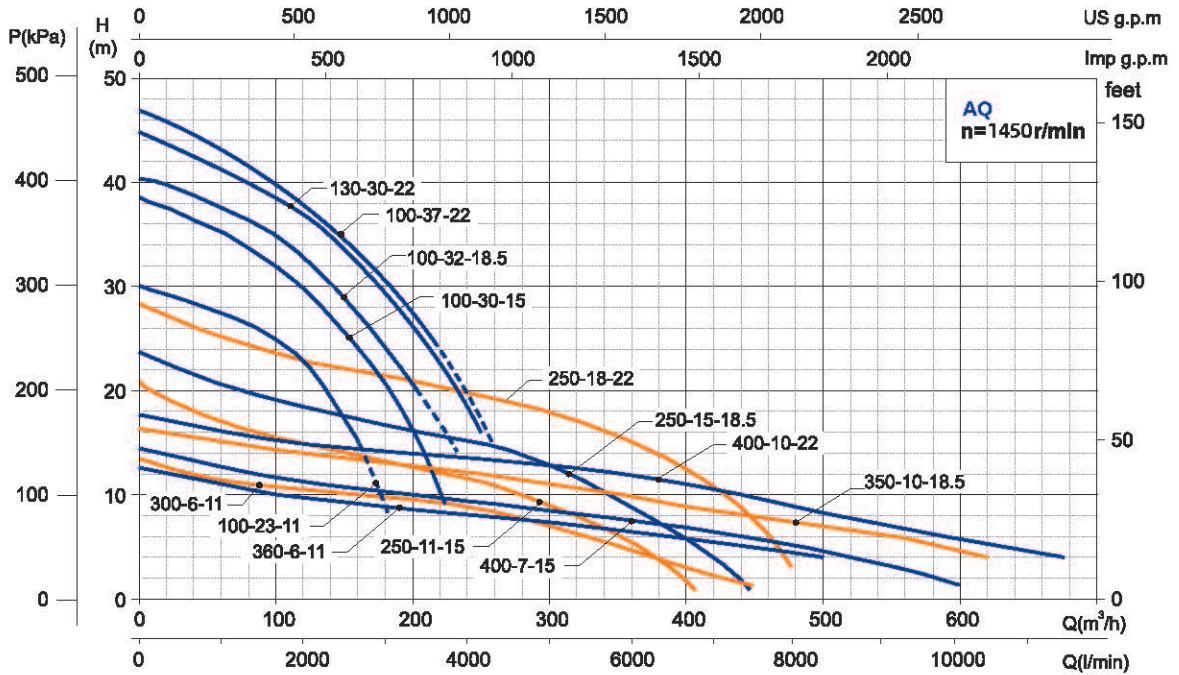
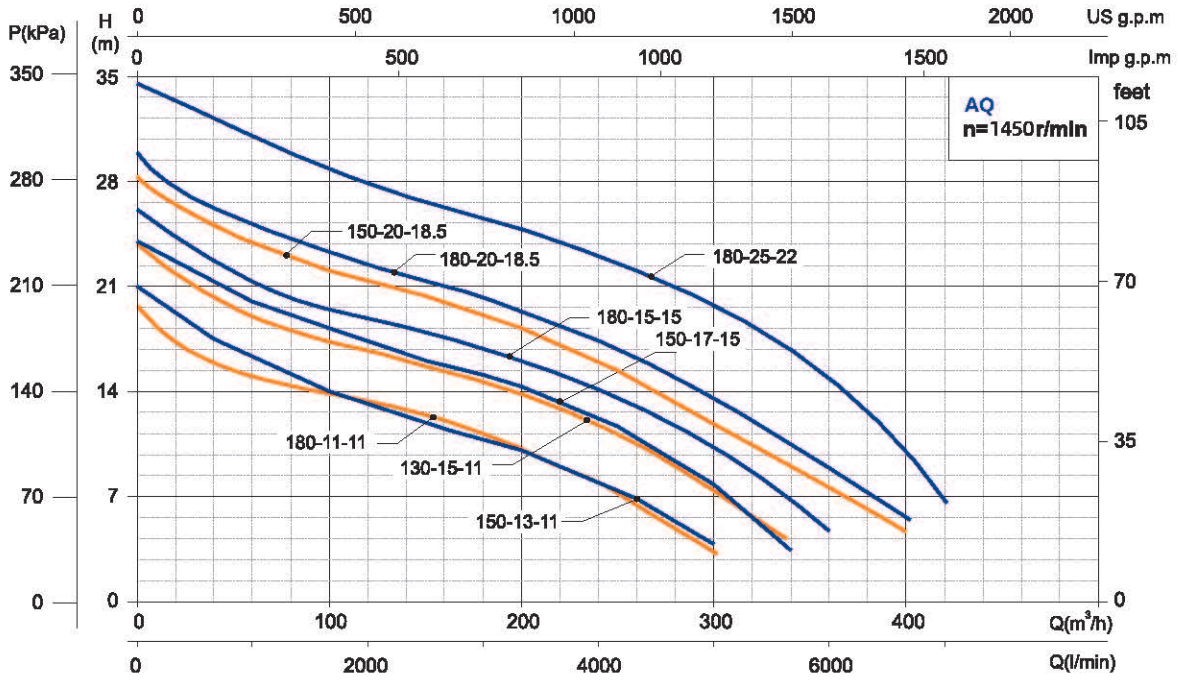
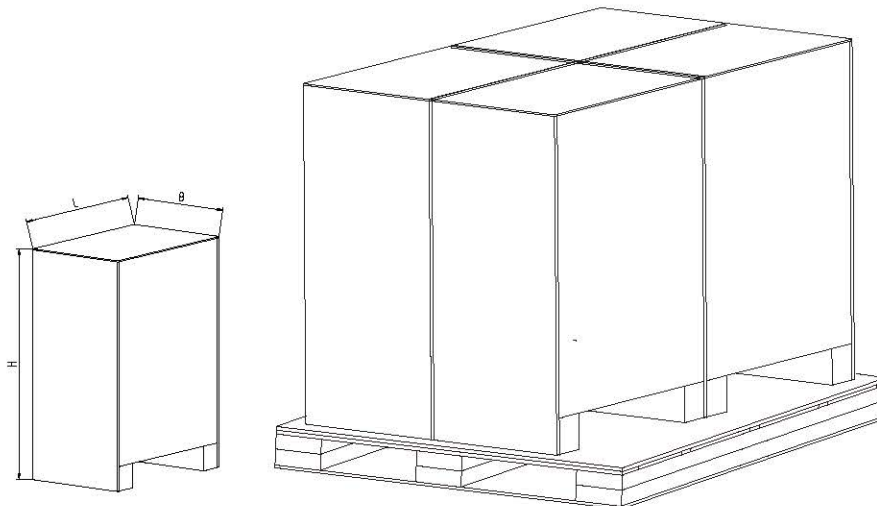


**Performance Curve**

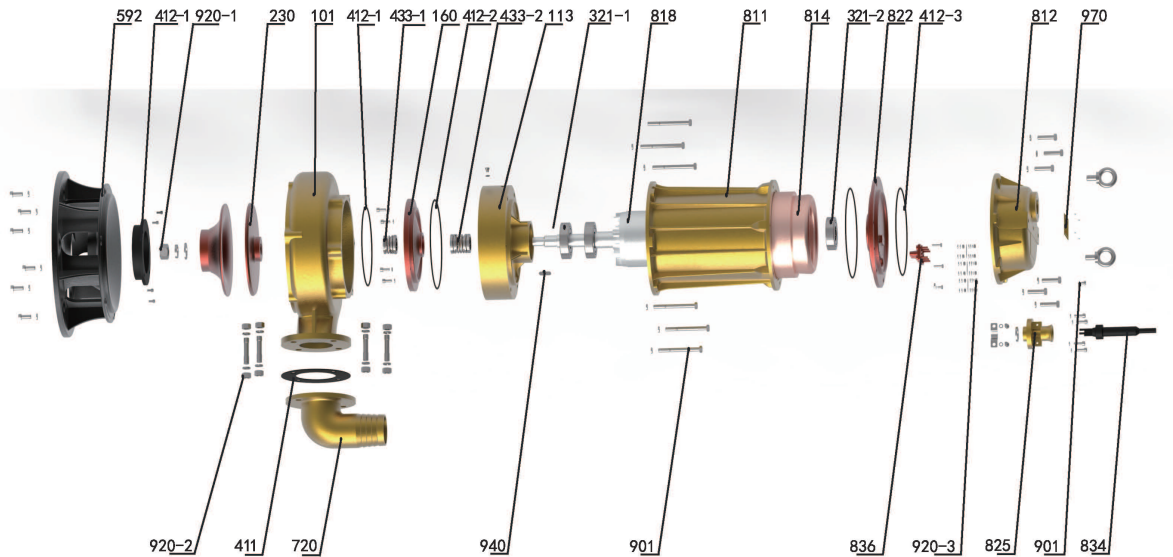


Model	Power		Rate Current (A)	Solids Passage (mm)	Max. Flow (m <sup>3</sup> /h)	Max. Head (m)	Head Range (m)	Cable line (m)	Dim.mm (L×W×H)	G.W (kg)	20' Loading Qty. (pcs)
	Three-Phase	kW									
AQ100-23-11	11	15	23.8	35	175	29	29~15	3*6+1*4-8	600×560×1230	253	69
AQ130-15-11	11	15	23.8	45	330	22	22~0	3*6+1*4-8	590×500×1290	256	76
AQ150-13-11	11	15	23.8	45	320	18	18~0	3*6+1*4-8	590×500×1290	253	76
AQ180-11-11	11	15	23.8	50	300	20	20~0	3*6+1*4-8	590×500×1290	253	76
AQ100-30-15	15	20	30.8	35	190	33	33~0	3*6+1*4-8	600×560×1230	270	69
AQ150-17-15	15	20	30.8	45	350	25	25~0	3*6+1*4-8	590×500×1290	268	76
AQ180-15-15	15	20	30.8	50	320	23	23~0	3*6+1*4-8	590×500×1290	268	76
AQ250-11-15	15	20	30.8	50	400	20	20~0	3*6+1*4-8	660×570×1380	298	55
AQ400-7-15	15	20	30.8	65	620	14	14~0	3*6+1*4-8	620×560×1450	312	55
AQ100-32-18.5	18.5	25	37.2	35	224	37	37~20	3*10+1*6-8	690×600×1300	338	54
AQ150-20-18.5	18.5	25	37.2	45	350	28	28~0	3*10+1*6-8	640×570×1350	356	61
AQ180-20-18.5	18.5	25	37.2	45	400	28	28~0	3*10+1*6-8	640×570×1350	365	61
AQ250-15-18.5	18.5	25	37.2	50	400	22	22~0	3*10+1*6-8	660×610×1450	372	48
AQ350-10-18.5	18.5	25	37.2	55	520	17	17~0	3*10+1*6-8	620×560×1525	370	55
AQ100-37-22	22	30	49.4	35	249	44	44~25	3*10+1*6-8	690×600×1300	351	54
AQ180-25-22	22	30	49.4	45	340	32	32~0	3*10+1*6-8	640×570×1350	366	61
AQ250-18-22	22	30	49.4	50	450	27	27~0	3*10+1*6-8	660×610×1450	377	48
AQ400-10-22	22	30	49.4	60	630	18	18~0	3*10+1*6-8	620×560×1525	385	55

Centrifugal pumps are not recommended to be used less than the lift range.

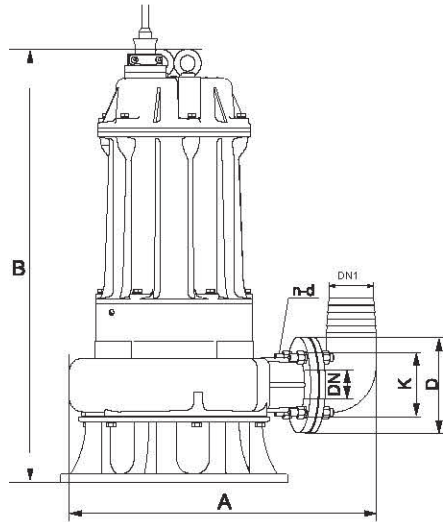


## Components & Materials



No.	Part name	No.	Part name	No.	Part name
101	Pump body	433-1	Mechanical seal	834	Cable sheath
160	Oil chamber cover	433-2	Mechanical seal	836	Terminal block
113	Oil chamber	502	Seal ring	901	Hexagon head bolt M12x125
230	Impeller	592	Base	920-1	Hexagon nut - Style 1
321-1	Deep groove ball bearing	720	Outlet joint	920-2	Hexagon nut - Style 1
321-2	Deep groove ball bearing	811	Casing	920-3	Hexagon nut - Style 1
411	Rubber washer	812	Head cover	940	Flat key
412-1	O-ring	814	Stator core with winding	970	Nameplate
412-2	O-ring	818	Rotor	752-1	Check valve seat
412-3	O-ring	822	Upper bearing block		
412-4	O-ring	825	Cable pressing plate		

## Dimensions & Weight



Model	Dim.(mm)						N.W. (kg)
	A	B	DN1/DN	D	K	n-d	
AQ100-23-11	710	995	4"	210	170	4-ø19	238
AQ130-15-11	750	995	6"	265	225	8-ø19	241
AQ150-13-11	750	995	6"	265	225	8-ø19	238
AQ180-11-11	750	995	6"	265	225	8-ø19	238
AQ100-30-15	710	995	4"	210	170	4-ø19	255
AQ150-17-15	750	995	6"	265	225	8-ø19	253
AQ180-15-15	750	995	6"	265	225	8-ø19	253
AQ250-11-15	855	1010	8"	320	280	8-ø19	283
AQ400-7-15	861	1040	8"	320	280	8-ø19	297
AQ100-32-18.5	775	1055	4"	210	170	4-ø19	323
AQ150-20-18.5	800	1070	6"	265	225	8-ø19	341
AQ180-20-18.5	800	1070	6"	265	225	8-ø19	341
AQ250-15-18.5	850	1065	8"	320	280	8-ø19	357
AQ350-10-18.5	861	1096	8"	320	280	8-ø19	355
AQ100-37-22	775	1055	4"	210	170	4-ø19	336
AQ180-25-22	800	1070	6"	265	225	8-ø19	351
AQ250-18-22	850	1065	8"	320	280	8-ø19	362
AQ400-10-22	861	1096	8"	320	280	8-ø19	370