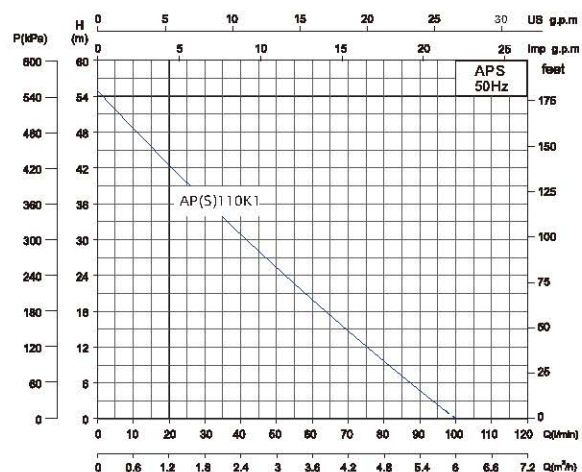
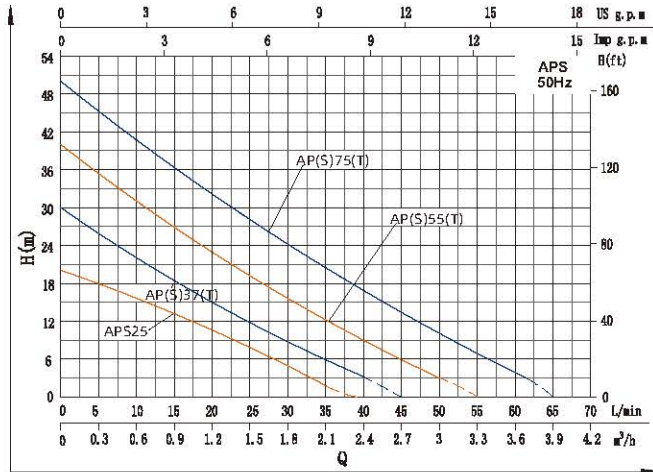


Performance Curve

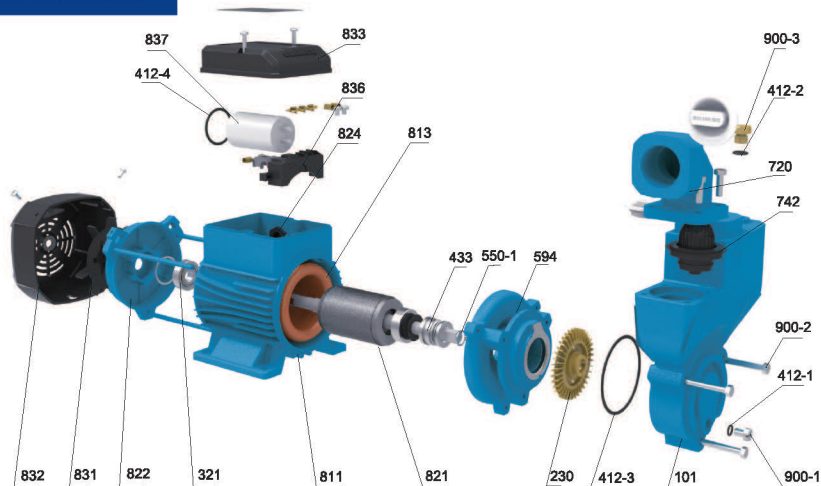


Model		Power		Max. Flow (m³/h)	Max. Head (m)	Head Range (m)	Max. Suction (m)
Single-Phase	Three-Phase	kW	HP				
APS25	-	0.25	0.34	2.3	20	16~0	8
APS37	-	0.37	0.5	2.7	30	27~0	8
APS55	-	0.55	0.75	3.3	40	37~0	8
APS75	-	0.75	1	3.9	50	47~0	8
APS37T	AP37T	0.37	0.5	2.7	30	27~0	8
APS55T	AP55T	0.55	0.75	3.3	40	37~0	8
APS75T	AP75T	0.75	1	3.9	50	47~0	8
APS110K1	AP110K1	1.1	1.5	6	55	51~1	8

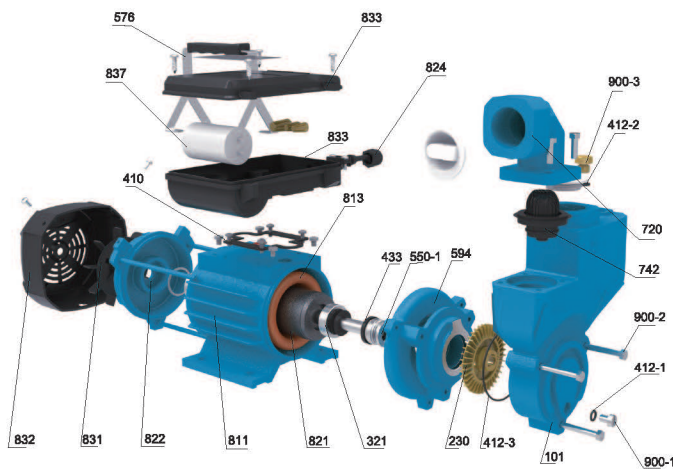
Components & Materials

Model	APS25	APS37	APS55	APS75	APS37T	APS55T	APS75T	APS110K1	AP110K1
Capacitor	10µF/450V	10µF/450V	12µF/450V	15µF/450V	10µF/450V	12µF/450V	15µF/450V	25 µF/450V	/
End cap Bearing	6201-2RZ	6201-2RZ	6202-2RZ	6202-2RZ	6201-2RZ	6202-2RZ	6202-2RZ	6203-2RZ	6203-2RZ
Coupling Bearing	6201-2RZ	6201-2RZ	6202-2RZ	6202-2RZ	6201-2RZ	6202-2RZ	6202-2RZ	6204-2RZ	6204-2RZ
Motor Shaft	Steel 45#-304							Steel 45#	Steel 45#
Mechanical Seal	108-12/21& B:A(PC)	108-12/21& B:A(PC)	108-12/21& B:A(PC)	108-12/21& B:A(PC)	108-12/21& B:A(PC)	108-12/21& B:A(PC)	108-12/21& B:A(PC)	108-14/25 S:A (P)Stationary seal ring ø28	
	A: Hot graphite, B: Alumina ceramic, P: Nitrile rubber, C: Stainless steel (06Cr19Ni10)								
Motor Case	Aluminum				Cast iron				
Coupling	Cast iron								
Pump Body	Cast iron								
Impeller	Hpb57-3	Hpb57-3	Hpb57-3	Hpb57-3	Hpb57-3	Hpb57-3	Hpb57-3	Hpb57-3	Hpb57-3

Components & Materials



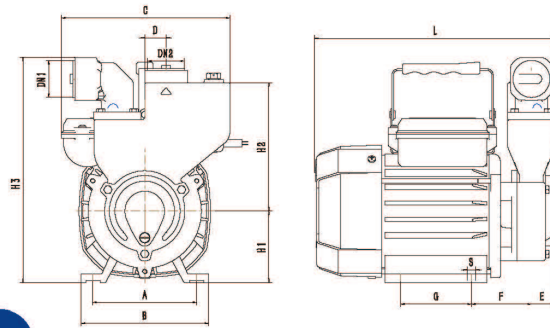
No.	Part name	No.	Part name	No.	Part name
900-3	Vent cock	230	impeller	831	fan
412-2	O-ring	594	Coupling	832	Fan cover
720	Inlet pipe	550-1	Circlip for shaft	824	Cable
742	Check valve	433	Machinery Seal	836	Terminal block
900-2	Hexagon head bolts full thread	821	Rotor	833	Junction Box
412-1	O-ring	813	Stator core with windings	837	Running capacitor
900-1	Slotted cheese head screws	811	chassis	412-4	O-ring
101	Pump body	321	Deep groove ball bearing		
412-3	O-ring	822	Back cover		



No.	Part name	No.	Part name	No.	Part name
900-3	Vent cock	230	impeller	831	fan
412-2	O-ring	594	Coupling	832	Fan cover
720	Inlet pipe	550-1	Circlip for shaft	824	Cable
742	Check valve	433	Machinery Seal	833	Junction box cover
900-2	Hexagon head bolts full thread	321	Deep groove ball bearing	576	Handle
412-1	O-ring	813	Stator core with windings	837	Running capacitor
900-1	Slotted cheese head screws	821	Rotor	410	Rubber gasket
101	Pump body	811	chassis	833	Junction Box
412-3	O-ring	822	Back cover		

Dimensions & Weight

Model		DN1	DN2	Dim.(mm)										
Single-Phase	Three-Phase	Inch		A	B	C	D	E	F	G	L	H1	H2	H3
APS25	-	1"	1"	100	123	165	22.5	19	56	80	235	63	124	212
APS37	-	1"	1"	100	123	165	22.5	19	56	80	235	63	124	212
APS55	-	1"	1"	112	136	165	22.5	22	55	88	254	72	135	232
APS75	-	1"	1"	112	136	165	22.5	22	57	88	255	72	135	232
APS37T	AP37T	1"	1"	95	121	178	22.5	19	62	70	235	63	124	212
APS55T	AP55T	1"	1"	110	137	178	22.5	22	62	75	253	75	135	235
APS75T	AP75T	1"	1"	110	137	178	22.5	22	63	75	255	75	135	235
APS110K1	AP110K1	1.5"	1.5"	114	136	198.5	31	16.5	87.5	101	286	80	168	278



Packing Size & Weight

Model		Dim.(LxWxH) mm	G.W. (kg)	Dim. For Outer Packing(LxWxH)mm	G.W. (kg)	20'Loading Qty. (pcs)
Single-Phase	Three-Phase					
APS25	-	280x215x272	6.5	280x215x272	6.5	1728
APS37	-	280x215x272	7.3	280x215x272	7.3	1728
APS55	-	305x230x290	9.7	305x230x290	9.7	1330
APS75	-	305x230x290	10.7	305x230x290	10.5	1330
APS37T	AP37T	280x215x272	9.1	280x215x272	9.1/8.5	1728
APS55T	AP55T	305x230x290	11.7	305x230x290	11.7	1330
APS75T	AP75T	305x230x290	13.7	305x230x290	13.7/12.7	1330
APS110K1	AP110K1	310x215x298	18.5/19	310x215x298	18.5/19	1470

