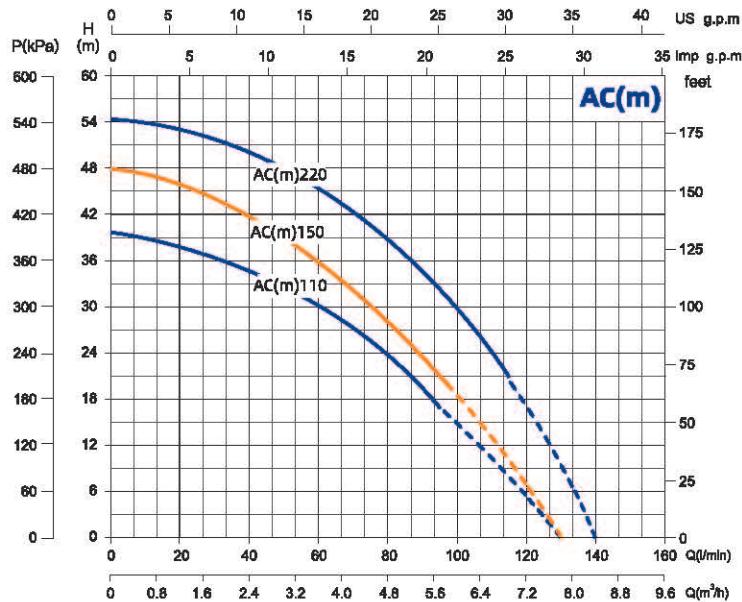
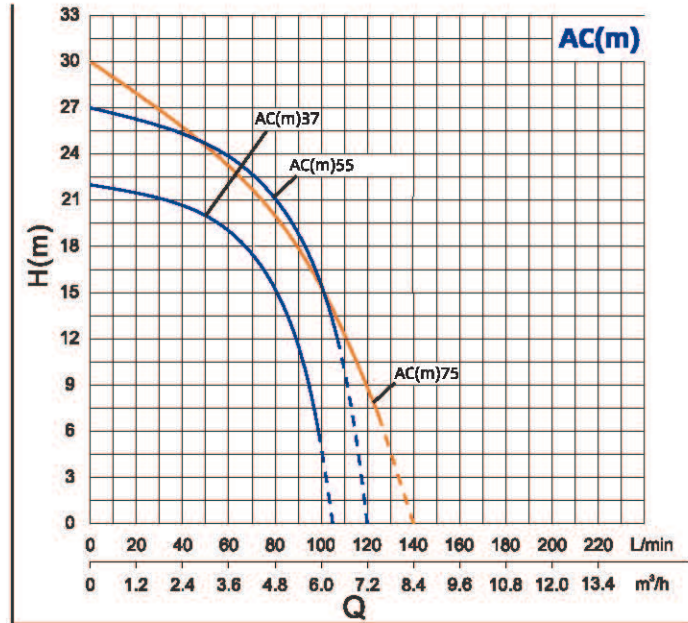
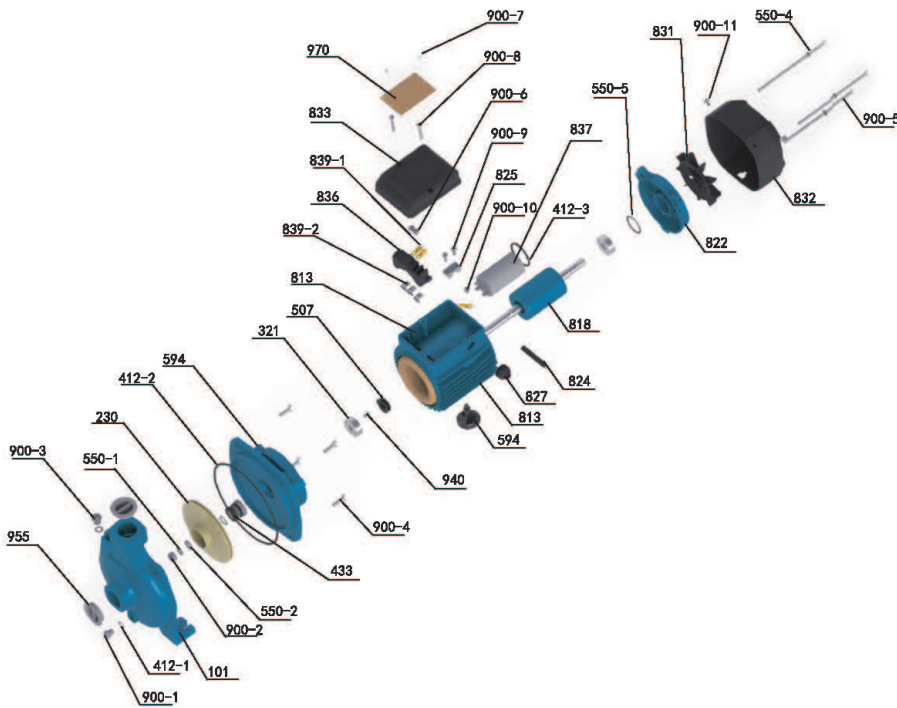


Performance Curve



Model		Power		Max. Flow (m³/h)	Max. Head (m)	Head Range (m)	Max. Suction (m)
Single-Phase	Three-Phase	kW	HP				
ACm37	AC37	0.37	0.5	6	22	22~8	7
ACm55	AC55	0.55	0.75	6.6	26	26~11	7
ACm75	AC75	0.75	1	7.2	32	32~14	7
ACm110	AC110	1.1	1.5	7.8	40	40~17	7
ACm150	AC150	1.5	2	7.8	48	48~20	7
ACm220	AC220	2.2	3	8.4	55	55~20	7

Components & Materials



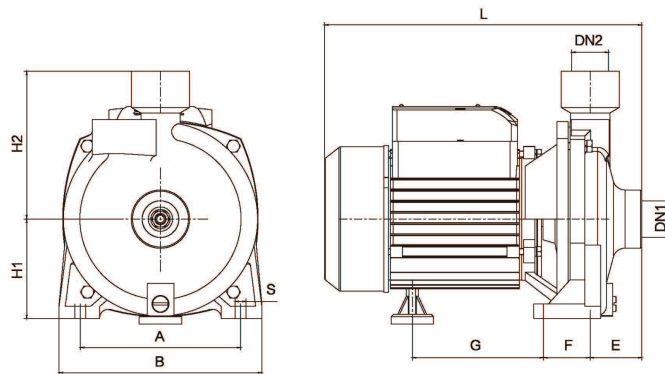
No.	Specifications
955	Dust cover
900-3	Vent cock
550-1	Spring washer
220	Impeller
412-2	O-ring
594	Connector
321	Deep groove ball bearing
507	Water retaining ring
813	Stator
900-1	Slotted cheese head screw
839-2	Insert spring 6.3
836	Terminal block
839-1	Closed wiring terminal
833	Junction box
970	Nameplate
900-7	Rivet
900-8	Hexagon cross recessed pan head screw
900-6	Cross recessed flange screw
900-9	Hexagon cross recessed pan head screw
825	Cable pressing plate
900-10	Hexagon cross recessed pan head screw
837	Running capacitor

No.	Specifications	No.	Specifications	No.	Specifications
412-3	O-ring	822	Rear end cover	900-4	Hexagon head bolt
550-5	Wave spring	818	Rotor	433	Mechanical seal
831	Fan	824	Cable	550-2	Flat washer
900-11	Cross recessed flange screw	827	Cable sheath	900-2	Type I hexagon nut
550-4	Spring washer	813	Stator	101	Pump body
900-5	Hexagon bolt	594	Foot	412-1	O-ring
832	Fan cover	940	Flat key		

Model	Single-Phase	ACm37	ACm55	ACm75	ACm110	ACm150	ACm220
	Three-Phase	AC37	AC55	AC75	AC110	AC150	AC220
Capacitor(μF)		18μF\450V	15μF\450V	20μF\450V	40μF\450V	45 μF/450V	45 μF/450Vx2
End cap Bearing		6201-2RZ	6202-2RZ	6202-2RZ	6204-2RZ	6204-2RZ	6205-2RZ
Connection Part Bearing		6201-2RZ	6202-2RZ	6202-2RZ	6204-2RZ	6204-2RZ	6304-2RZ
Motor Shaft	Steel 45#+304						
Mechanical Seal		108-12/21& B:A(PC)	108-14/25& B:A(PC)	108-14/25& B:A(PC)	108-17/23.5 B:A (P) Stationary seal ring ø30		
	A:Graphite B: Ceramic P:NBR						
Motor Case		YL102			Aluminum		
Coupling		HT200			Cast Iron		
Pump Body		HT200			Cast Iron		
Impeller		304			Brass		

Dimensions & Weight

Model	DN1	DN2	Dim.(mm)									N.W. (kg)
	Inch	A	B	E	F	G	L	S	H1	H2		
AC(m)37	1	1	124	160	43	31	114	268	10	87	125	8.5
AC(m)55	1	1	140	180	47	38	112	294	10	98	132	11.5
AC(m)75	1	1	140	182	47	38	112	294	10	100	144	13.5
AC(m)110	1.25	1	170	210	46	45.5	164.5	346	11	108	153	20
AC(m)150	1	1	185	230	36	37	171	351	10	116	177	23
AC(m)220	1	1	185	230	54	37	197	401	10	116	177	30.5



Packing Size & Weight

Model	Dim.(L×W×H) mm	G.W. (kg)	20'Loading Qty. (pcs)
AC(m)37	300×205×270	9	1672
AC(m)55	330×225×285	12	1456
AC(m)75	330×230×300	14	1225
AC(m)110	390×240×290	21	1168
AC(m)150	390×260×320	24.5	981
AC(m)220	455×280×340	33.5	742

