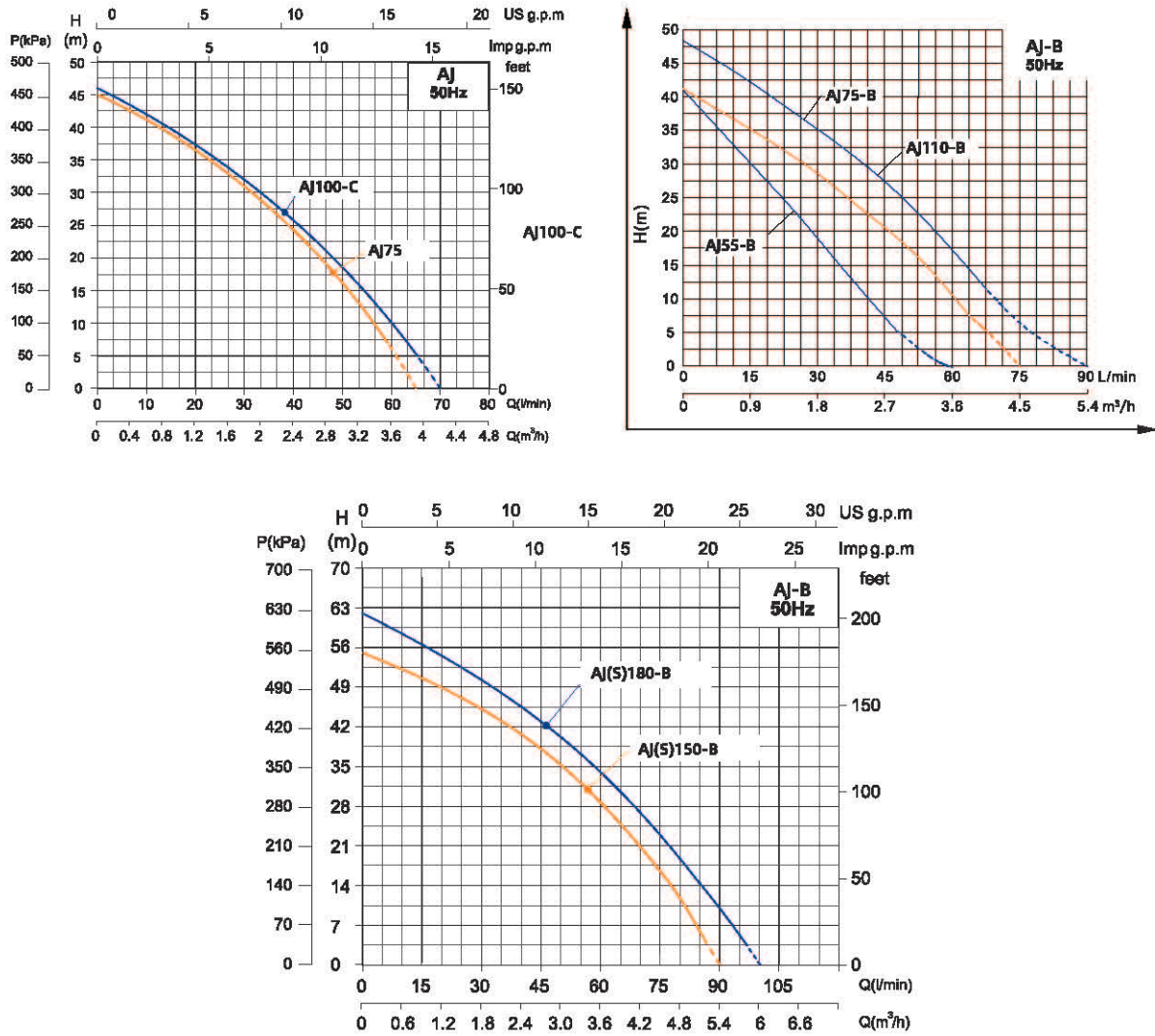


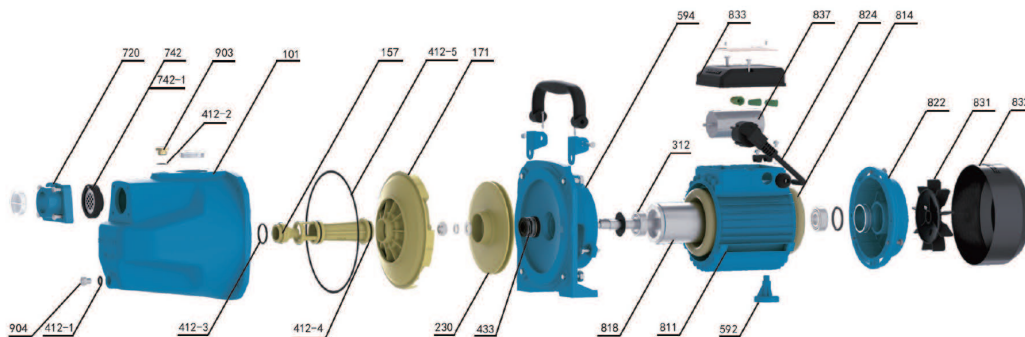
**Performance Curve**



Model		Power		Max. Flow (m³/h)	Max. Head (m)	Head Range (m)	Max. Suction (m)
Single-Phase	Three-Phase	kW	HP				
AJ100-C	-	0.75	1	4.2	46	46~6	9
AJ75	-	0.75	1	3.9	45	45~7	9
AJ55-B	-	0.55	0.75	3.6	41	41~7	9
AJ75-B	-	0.75	1	4.5	41	41~7	9
AJ110-B	-	1.1	1.5	5.4	48	48~6	9
AJ150-B	AJS150-B	1.5	2	5.4	55	55~4.5	9
AJ180-B	AJS180-B	1.8	2.5	6	62	62~3.5	9

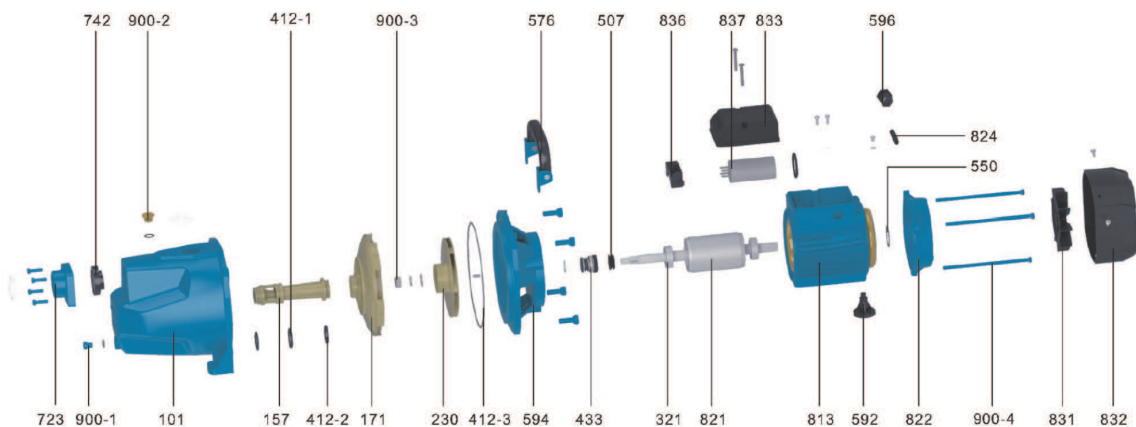
Note: The cable length of 0.3m, no plug.

## Components & Materials



### Applicable to AJ series

No.	Part name	No.	Part name	No.	Part name
720	Inlet joint	824	Cable (domestic)	433	Mechanical seal
321	Deep groove ball bearing	814	Stator core with winding	592	Foot
818	Rotor	412-3	O-ring	101	Pump body (SHIMGE)
832	Fan cover	171	Guide vane	831	Fan\QB70
837	Running capacitor	811	Casing	594	Connector
412-5	O-ring	412-2	O-ring	904	Slotted cheese head screw
903	Vent cock	157	Ejector (with nozzle)	822	Rear end cover
412-1	O-ring	833	Junction box	742-2	Check valve with filter
230	Impeller	412-4	O-ring	742-1	Valve sleeve



### Applicable to AJ(S) series

No.	Part name	No.	Part name	No.	Part name
101	Pump body	592	Feet	836	Terminal block
157	Ejector	594	Coupling	837	Running capacitor
171	Guide vane	596	Cable lock	900-1	Slotted cheese head screws
230	impeller	723	Inlet Festival	900-2	Hexagon head bolts full thread
321	Deep groove ball bearing	742	Check valve	900-3	Vent cock
412-1	O-ring	813	stator	900-4	Type 1 hex nut
412-2	O-ring	821	Rotor		
412-3	O-ring	822	Back cover		
433	Machinery Seal	824	Cable		
507	Retaining spring	831	fan		
550	Wave spring	832	Fan cover		
576	Handle components	833	Junction Box		

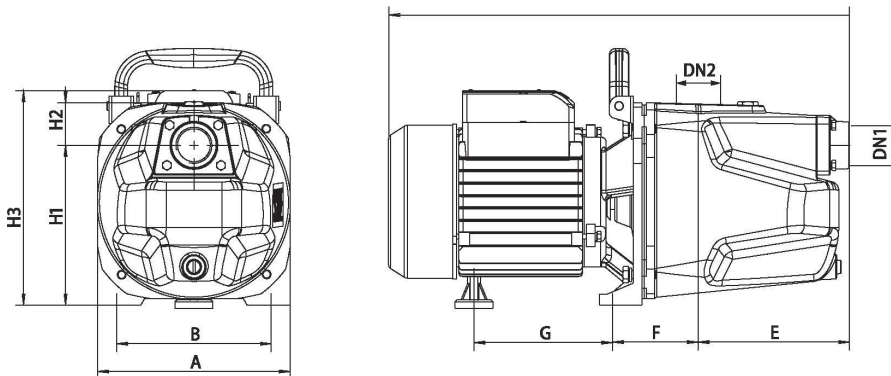
## Components & Materials

Model	AJ100-C	AJ75
Capacitor( $\mu$ F)	20 $\mu$ F/450V	18 $\mu$ F/450V
End cap Bearing	6202-2RZ	
Connection Part Bearing	6202-2RZ	
Motor Shaft	AISI 304+Steel 45#	
Mechanical Seal	104-14/25 B:A (P) Stationary seal ring $\varnothing$ 26	
	A:Graphite B: Ceramic P:NBR	
Motor Case	Aluminum	
Coupling	Cast Iron	
Pump Body	Cast Iron	
Impeller	Copper	
Guide Vane	Brass	

Model	AJ55-B	AJ75-B	AJ110-B	AJ150-B	AJ180-B	AJ5150-B	AJ5180-B
Capacitor( $\mu$ F)	12 $\mu$ F/450V	18 $\mu$ F/450V	25 $\mu$ F/450V	30 $\mu$ F/450V	35 $\mu$ F/450V	/	/
End cap Bearing	6202-2RZ			6204-2RZ			
Connection Part Bearing	6202-2RZ			6204-2RZ			
Motor Shaft	AISI304+Steel 45#						
Mechanical Seal	108-14/25 B:A (P) Stationary seal ring			108-16/25 S:A(PC) Stationary seal ring $\varnothing$ 26.9			
	A:Graphite B: Ceramic P:NBR E:EPDM						
Motor Case	Aluminum						
Coupling	Cast Iron						
Pump Body	Cast Iron						
Impeller	304 / PPO						
Guide Vane	Plastics PPO						

## Dimensions & Weight

Model		DN1	DN2	Dim.(mm)										N.W. (kg)
Single-Phase	Three-Phase	Inch		A	B	E	F	G	L	H1	H2	H3	S	
AJ100-C	-	1	1	180	145	143	88.5	101	220	157	29	198	11	16
AJ75	-	1	1	180	145	149.5	96.5	102.5	434.5	154.5	36	198.5	11	17
AJ55-B	-	1	1	140	173	132	21	172	430	147	38	204	12	13.3
AJ75-B	-	1	1	140	173	132	21	172	430	147	38	204	12	14.7
AJ110-B	-	1	1	140	173	132	21	172	430	147	38	204	12	15.7
AJ150-B	AJS150-B	1.5	1.5	207	170	173	16	212	514	172	52	238	11	23
AJ180-B	AJS180-B	1.5	1.5	207	170	173	16	212	514	172	52	238	11	24



## Packing Size & Weight

Model		Dim.(L×W×H) mm	G.W. (kg)	20' Loading Qty. (pcs)
Single-Phase	Three-Phase			
AJ100-C	-	430×210×195	16.5	1480
AJ75	-	470×200×204	17.5	1606
AJ55-B	-	480×205×225	14	1420
AJ75-B	-	480×205×225	15.5	1420
AJ110-B	-	480×205×225	16.5	1420
AJ150-B	AJS150-B	585×245×290	24.5	768
AJ180-B	AJS180-B	585×245×290	26	768

